

User Manual

Diskeeper[®] for Windows[®]

August 2003

This document describes the installation and operation of Executive Software International's Diskeeper, *The Standard in Entire Network Defragmentation*[™] for Microsoft[®] Windows. It is intended primarily for Windows system administrators and managers.

Revision/Update Information:	This is a new manual
Software Versions:	Diskeeper 8.0 Professional Edition Diskeeper 8.0 Server Standard Edition Diskeeper 8.0 Server Web Edition Diskeeper 8.0 Server Enterprise Edition Diskeeper 8.0 Server Datacenter Edition
Operating Systems:	Windows Server [™] 2003 Windows XP Professional Windows XP Home Edition Windows 2000 Server Windows 2000 Professional Windows NT 4.0 Server (SP 6 or higher) Windows NT 4.0 Workstation (SP 6 or higher) Windows Millennium Edition (Me) Windows 98 Windows 95 (OSR 2 or higher)

Executive Software International, Inc., Burbank, California, USA



August 2003

© 2002 – 2003 by Executive Software International, Inc.

The Software described in this document is owned by Executive Software International, Inc. and is protected by United States copyright laws and international treaty provisions. Therefore, you must treat the Software like any other copyrighted material (e.g. a book or musical recording) except that you may either (a) make one copy of the Software solely for backup or archival purposes, or (b) transfer the Software to a single hard disk provided you keep the original solely for backup or archival purposes. You may not copy the user documentation provided with the Software, except for your own authorized use.

RESTRICTED RIGHTS LEGEND

The software and documentation are provided with RESTRICTED RIGHTS. Use, duplication, or disclosure by the Government is subject to restrictions as set forth in subparagraph (c)(1)(ii) of the Rights in Technical Data and Computer Software clause at DFARS 252.227-7013 or subparagraphs (c)(1) and (2) of the Commercial Computer Software-Restricted Rights at 48 CFR 52.227-19 as applicable. Manufacturer is Executive Software International, Inc., 7590 North Glenoaks Boulevard, Burbank, California 91504.

Executive Software, Diskeeper, Sitekeeper, Undelete, "Set It and Forget It," "Smart Scheduling," and "Focused development of system management tools," and "The Standard in Entire Network Defragmentation" are either registered trademarks or trademarks of Executive Software International, Inc. in the United States and other countries.

Microsoft, Active Directory, Windows, Windows NT and Windows Server 2003 are either registered trademarks or trademarks owned by Microsoft Corporation in the United States and/or other countries.

All other trademarks are the property of their respective owners.

CONTENTS

PREFACE	VII
WHAT THIS BOOK IS ABOUT	VII
STRUCTURE OF THIS BOOK	VII
INTRODUCTION	VIII
ABOUT FRAGMENTATION	IX
OTHER IMPORTANT PRODUCTS	X
DISKEEPER INSTALLATION	1
BEFORE THE INSTALLATION	1
WINDOWS VERSIONS AND PLATFORMS SUPPORTED	1
FILE SYSTEMS SUPPORTED	1
DISKS SUPPORTED	2
RESOURCE REQUIREMENTS	2
ADDITIONAL SOFTWARE REQUIREMENTS	2
INSTALLATION PROCEDURE—THE SHORT VERSION	3
INSTALLATION PROCEDURE—THE DETAILS	3
INSTALLATION OVERVIEW	3
INSTALLATION PROCEDURE	4
AFTER THE INSTALLATION	6
CHECK FOR UPDATE	6
REGISTERING DISKEEPER	6
ABOUT WINDOWS SERVICE PACKS	6
REPAIRING WINDOWS SYSTEMS	7
ABOUT THE DISKEEPER SERVICE	7
THE WINDOWS APPLICATION EVENT LOG	7
EVENT LOGGING UNDER WINDOWS 95/98/ME	8
REMOTE INSTALLATION	8
UNINSTALLING DISKEEPER	8
GETTING STARTED	11
INTRODUCTION	11
QUICK TOUR	12
OVERVIEW OF DISKEEPER	21
DISKEEPER FEATURES	21
OTHER THINGS TO KNOW	22

DEFRAGMENTATION MODES	23
EXCLUSION LIST	25
PRIORITY	25
DEFRAGMENTATION METHODS	25
EVENT LOGGING	25
COMMAND LINE INTERFACE	26
GETTING THE MOST FROM DISKEEPER	26
<u>DISKEEPER OPERATION</u>	29
THE DISKEEPER INTERFACE	29
INFORMATION PANE	30
THE PERFORMANCE PANE	30
THE RELIABILITY PANE	33
THE FRAGMENTATION PANE	35
VOLUME SECTION	35
FRAGMENTATION PERCENTAGE SECTION	36
FILE FRAGMENTATION SECTION	37
PAGING FILE FRAGMENTATION SECTION	37
DIRECTORY FRAGMENTATION SECTION	38
MASTER FILE TABLE (MFT) FRAGMENTATION SECTION	38
MOST FRAGMENTED FILES	39
SAVING A FRAGMENTATION REPORT	41
PRINTING A FRAGMENTATION REPORT	41
DRIVE MAP PANE	41
WHAT THE COLORS MEAN	42
SET IT AND FORGET IT PANE	43
SMART SCHEDULING	46
SCREEN SAVER MODE	48
COMMAND PANE	49
SET IT AND FORGET IT MENU	50
ANALYZE SELECTED DRIVE	52
DEFRAGMENT SELECTED DRIVE	53
CHANGE YOUR SETTINGS MENU	54
HELP MENU	56
DISK VOLUME PANE	57
TOOLBAR BUTTONS	58
BOOT-TIME DEFRAGMENTATION OVERVIEW	59
RUNNING A BOOT-TIME DEFRAGMENTATION	61
SETTING AN EXCLUSION LIST	65
DISKEEPER INTERNAL EXCLUSION LIST	68
SETTING DISKEEPER PRIORITY	68

USING DIFFERENT DEFRAGMENTATION METHODS	69
USING POWER MANAGEMENT	70
LOGGING DISKEEPER ACTIVITY	71
WINDOWS NT/2000/XP/SERVER 2003 EVENT LOG	71
WINDOWS 95/98/ME EVENT LOG	72
SPECIFYING WHAT GETS LOGGED	72
TERABYTE VOLUME ENGINE	80
RUNNING DISKEEPER FROM THE COMMAND PROMPT	81
PARAMETERS	81
EXAMPLES	82
<u>THEORY OF OPERATION</u>	83
INTRODUCTION	83
DESIGN GOALS	83
<u>TABLE OF DISKEEPER EDITIONS</u>	87
<u>ANSWERS TO FREQUENTLY ASKED QUESTIONS</u>	89
<u>SUPPORT SERVICES</u>	99
<u>REMOTE INSTALLATION</u>	101
DISKEEPER PUSHINSTALL	101
<u>DISKEEPER AS A CLUSTER-AWARE APPLICATION ON A CLUSTER SERVER</u>	103
REQUIREMENTS	103
SETTING UP THE CLUSTER RESOURCE AND BRINGING IT ONLINE	103
<u>GLOSSARY</u>	105
<u>INDEX</u>	117

Preface

What This Book is About

Welcome to the Diskeeper User Manual. We realize software manuals tend to be one of the least-favorite pieces of reading material around, so we intend to make this one as painless as possible. This book will first help you get Diskeeper quickly installed and running. Next, it describes the various Diskeeper features and how to use them. Finally, it explains about disk fragmentation on your Windows system.

Structure of This Book

- Chapter 1 describes how to install Diskeeper.
- Chapter 2 explains how to start using Diskeeper and how to see the amount of fragmentation on your disk volumes.
- Chapter 3 gives a brief overview of Diskeeper.
- Chapter 4 explains the various features of Diskeeper in detail.
- Chapter 5 presents the theory of Diskeeper operation.
- Appendix A has tables showing the different Diskeeper editions, and the operating systems, features and capacities they support.
- Appendix B provides answers to frequently asked questions.
- Appendix C explains how to contact your Executive Software Customer Service Representative for Support Services.
- Appendix D discusses methods you can use to install Diskeeper network-wide.
- Appendix E explains how to run Diskeeper as a cluster-aware application on a cluster server.
- The Glossary provides definitions of technical terms used in this manual.

Introduction

Throughout its history, Diskeeper has improved with each new version. Diskeeper version 8.0 continues this tradition with the introduction of an expanded product line with innovative new features and approaches to solving fragmentation problems for everyone, from home users to huge enterprise IT departments.

Since the introduction of Diskeeper for Windows NT in 1995, disk capacities have increased significantly, particularly in server environments. Nowadays, it is not uncommon to see disk volumes in the terabyte range (approximately 1,000 gigabytes, or approximately a thousand billion bytes) with millions of files. High-capacity disks need a specialized approach to defragmentation, since it can take a 'typical' defragmenter days to analyze and defragment such a disk volume. To address this specialized need, Executive Software has expanded its family of defragmentation products to match the broad range of operating system choices now available from Microsoft, particularly the Windows Server 2003 offerings. Each Diskeeper edition in this expanded product lineup was specifically designed to maximize the potential of the operating systems it supports.

This User Manual describes the operation of these Diskeeper editions:

- ***Diskeeper Professional Edition***—for desktop systems running Windows 95, Windows 98, Windows Me, Windows NT, Windows 2000, and all Windows XP editions.
- ***Diskeeper Server Web Edition***—for systems running Windows NT Workstation, Windows 2000 Professional, All Windows XP editions, and Windows Server 2003 Web Edition.
- ***Diskeeper Server Standard Edition***—for systems running Windows NT 4.0 Server, Windows 2000 Professional, Windows 2000 Server, all Windows XP editions, Windows Server 2003 Standard Edition, Windows Server 2003 Web Edition, Windows 2000 Server w/Server Appliance Kit, and Windows Server 2003 w/Server Appliance Kit.
- ***Diskeeper Server Enterprise Edition***—for systems running Windows 2000 Professional, Windows 2000 Server, Windows XP Professional, Windows XP Media Center Edition, Windows Server 2003 Standard Edition, Windows Server 2003 Web Edition, Windows Server 2003 Enterprise Edition, Windows 2000 Server w/Server Appliance Kit, and Windows Server 2003 w/Server Appliance Kit.
- ***Diskeeper Server Datacenter Edition***—for systems running Windows 2000 Server, Windows Server 2003 Standard Edition, Windows Server 2003 Web Edition, Windows Server 2003 Enterprise Edition, Windows 2000 Datacenter Edition, and Windows Server 2003 Datacenter Edition.

In addition to these versions, the Diskeeper family of products also includes *Diskeeper Home Edition* for home users and *Diskeeper Administrator Edition*, an administrative console for controlling Diskeeper installations throughout your network.

Diskeeper Home Edition incorporates simplified controls, and does not support the network defragmentation capabilities available in the other Diskeeper editions.

Diskeeper Administrator Edition is not a defragmenter, but an application that provides a single point of control by which you can control all the Diskeeper 8.0 installations on your network.

See *Appendix A* for tables showing all the Diskeeper editions with the features and operating system versions they support.

About Fragmentation

As used in this manual, the term *disk fragmentation* means two things:

- a condition in which pieces of individual files on a disk volume are not contiguous, but rather are broken up and scattered around the disk; and
- a condition in which the free space on a disk volume consists of little pieces of space here and there rather than a few large free spaces.

The effects of excessive fragmentation are twofold as well:

- file access takes longer because a file must be collected in pieces here and there, requiring several disk accesses instead of just one; and
- file creations take longer because space for the file must be allocated in little pieces here and there instead of just one contiguous allocation.

The bottom line—fragmentation slows Windows system performance. The longer you wait to defragment your disk volumes, the slower your computer runs.

With Diskeeper, all the disks in a Windows operating system can be kept defragmented indefinitely. Diskeeper cleans them up and keeps them that way. This includes disks with compressed, encrypted and sparse files on NTFS volumes.

Running either invisibly as a background job or as a manual defragmenter, Diskeeper carefully rearranges files and free space on a disk volume so they consist of as few pieces as possible. Because Diskeeper runs online, there is no need to lock users off a disk while it is being defragmented.

Diskeeper is the complete “Set It and Forget It”® solution to the loss in system performance caused by disk fragmentation!

Other Important Products

Executive Software is known throughout the computer industry for its focused development of system management tools. If you are running Windows NT, Windows 2000, Windows XP or Windows Server 2003, you should also use:

Undelete[®] for Windows

Instantly recover files that have been accidentally deleted anywhere on your network. Undelete sets up a Recovery Bin that caches all deletions—even versions created between backups—and saves you the time and money of wading through backups. Undelete also includes a recovery tool for files that have been deleted before Undelete was installed. Data is your business. Complete your data protection solution with Undelete, available from your local reseller or directly from Executive Software.

Sitekeeper[®] System Management Software

Get at-a-glance updates on every software version, build, update and patch. Also see detailed hardware information including processor speed, RAM, hard drive size, logical free space and asset management tags from the BIOS and motherboard. Install/uninstall programs with a few clicks of the mouse.

Chapter 1

Diskeeper Installation

This chapter provides information you need before, during, and after installing Diskeeper.

Before the Installation

Windows Versions and Platforms Supported

Diskeeper runs on the Intel® x86 platform (including Pentium™ and compatible CPUs from other manufacturers) running Windows Server 2003, Windows XP Professional, Windows 2000 Professional or Server, Windows NT 4.0 Workstation or Server, Windows Me, Windows 98, or Windows 95 (OSR 2).

File Systems Supported

Operating System	File Systems
Windows Server Windows XP Windows 2000 Windows Server 2003	NTFS, FAT16 and FAT32
Windows NT (SP 6 or higher)	NTFS and FAT16
Windows Me Windows 98 Windows 95 (OSR 2 or higher)	FAT16 and FAT32

Note that the 12-bit FAT file system is not supported. (The 12-bit FAT file system is used on FAT volumes smaller than 16 megabytes in size, such as floppy disks). In addition, NTFS volumes formatted with a cluster size larger than 4 kilobytes are not supported (except on Windows XP and Windows Server 2003, which support cluster sizes up to 64 KB).

Disks Supported

Diskeeper supports a wide range of SCSI and IDE disks, including:

- Primary Partitions
- Extended Partitions
- Logical Drives
- Volume Sets
- RAID Arrays
- Mirrored Disks

Resource Requirements

The disk space requirements for Diskeeper depend on several factors. On Windows Server 2003, Windows XP and Windows 2000 systems, Diskeeper will need about 6.5 MB. Allow about 10 MB of extra free space for temporary files during the installation. If Internet Explorer is not present on your computer, some other needed files (hhupd.exe, 50comupd.exe, and windist.exe) may be added. Further, your system may require a new or updated version of DCOM (less than 3 MB) and/or MMC (less than 6 MB).

Additional Software Requirements

On Windows NT 4.0 computers, Service Pack 6 is required for Diskeeper to function properly. Diskeeper will not install on Windows NT systems running Service Pack 5 or lower.

Diskeeper relies on both the Distributed Component Object Model (DCOM) and the Microsoft Management Console (MMC).

- DCOM is used for communication between the various components that make up Diskeeper. For example, when a Diskeeper defragmentation operation is scheduled to begin, the Diskeeper controller module uses DCOM to send a message to the defragmentation engine to begin the defragmentation process.
- The MMC provides a single point of control for system utilities such as Diskeeper. The MMC is used as a central location for a variety of Microsoft and third party administrative tools.

Note: In most cases, Windows 95 systems are not running either DCOM or the MMC by default. On Windows 98/Me and Windows NT, Windows 2000, Windows XP and Windows Server 2003 systems, DCOM is installed by default when the operating system is installed. The MMC normally has to be installed separately, except on Windows 2000, Windows XP and Windows Server 2003

systems, where it is already built into the operating system. The Diskkeeper setup process will automatically install DCOM and/or the MMC on your computer, if needed.

Installation Procedure—The Short Version

The Diskkeeper installation is typically fast and simple. Here are the basic steps:

Note: On Windows NT, Windows 2000, Windows XP, or Windows Server 2003, make sure you are logged onto an account that is a member of the Administrators group.

1. Insert the Diskkeeper CD-ROM into the appropriate drive on your computer. (If you are installing from a downloaded file, double-click the file you downloaded.)
2. Follow the screens displayed, answering the questions asked as prompted.

That's it! It would still be a good idea to read *After the Installation* on page 6, but you're done with the installation.

Installation Procedure—The Details

Installation Overview

Diskkeeper is installed by the **SETUP.EXE** program supplied on the Diskkeeper CD-ROM. The **SETUP.EXE** program:

- Confirms that you have Administrator privileges (on Windows NT, Windows 2000, Windows XP, and Windows Server 2003 systems).
- Determines which Windows version you are running.
- Checks for sufficient space on the disk for the installation.
- Detects and removes any previously installed Diskkeeper software.
- Copies the Diskkeeper files to the destination directories, updates the Windows registry, starts the Diskkeeper service, and creates a link in the start menu for **Executive Software Diskkeeper**.

Installation Procedure

Diskeeper can be installed from a CD-ROM, or it may be downloaded from the Web. This procedure applies to both methods. Before you start the installation, please note the following:

- Windows 95 machines must be OSR 2 or higher.
- Windows NT 4.0 machines must have Service Pack 6 or higher installed
- On Windows NT 4.0 machines, if you have previously installed Diskeeper Lite on your computer, Executive Software recommends that you uninstall it before proceeding with the installation of Diskeeper. If, however, you decide to leave Diskeeper Lite on your system, be aware that uninstalling Diskeeper Lite after the installation will remove certain Windows NT registry entries used by Diskeeper, and you will need to re-install Diskeeper. Use the Add/Remove Programs applet in Control Panel to uninstall Diskeeper Lite.
- On Windows 2000, Windows XP and Windows Server 2003 machines, installing Diskeeper will not remove the built-in defragmenter, but Diskeeper will automatically become the default defragmenter. (The built-in defragmenter will be restored if you uninstall Diskeeper.)
- To install Diskeeper on Windows NT, Windows 2000, Windows XP, or Windows Server 2003 systems, you must be logged into an account that is a member of the Administrators group.

This installation procedure assumes you are installing from CD-ROM. If the Diskeeper software was downloaded from the Web, double-click the executable file in the directory into which it was downloaded and go directly to step 3.

1. Insert the Diskeeper CD-ROM into the appropriate drive on your computer.
2. The Windows AutoPlay feature automatically displays a screen that allows you to install Diskeeper or choose from an assortment of trialware versions of Executive Software products.

If you have disabled the AutoPlay feature, simply double-click the **Setup.exe** file in the root-level folder on the CD-ROM and follow the instructions displayed.

3. If you are installing an upgrade version of Diskeeper and do not have the previous version currently installed on your computer, you will be asked to verify your previous version. You can skip this step if you are installing a full or trialware version of Diskeeper.
 - If you do not have a full version installed, but have an ESD (Electronic Software Distribution) version of Diskeeper on your system, you will be asked for its location. This must be the only file located in the folder

location. When Setup has verified the version is valid, the installation will continue.

- If you do not have a full version installed but have a CD of a full version, you will be asked to insert the CD. After Setup checks the CD, you will need to re-insert the CD you are installing the new version from. Press the SHIFT key when inserting the older CD as well as the newer CD, to disengage the AutoPlay feature.
4. Click **Next** when the welcome message appears.
 5. After you have read and accepted the license agreement, click **Next** to continue.
 6. As an option, you can change the destination location for the Diskeeper files. By default, Diskeeper is installed here:
Program Files\Executive Software\Diskeeper
You can choose a different disk volume or directory for the installation as follows:
 - a) Click **Change**.
 - b) Make the desired changes to the destination and click **OK** to accept the new destination. If the directory you specify does not exist, a new directory will be created.
 - c) Click **Next**.
 7. If Internet Explorer 4.01 or higher is not installed on your computer, another installation program is started and a package of necessary components is installed on your computer. Microsoft Management Console (MMC), which is the interface for Diskeeper, requires these components. These components are a small subset of Internet Explorer—not the complete Internet Explorer product. Installing these components (hhupd.exe, 50comupd.exe, and wintdist.exe) will not affect your current web browser. Note that you must restart your computer after installing Diskeeper if these components are installed.
 8. If the MMC is not installed on your computer, the MMC Setup program is started automatically. After the MMC files are installed, the Diskeeper Setup program resumes.
 9. The Setup program checks to confirm DCOM is installed on your computer. If it is not, the DCOM Setup program is begun. After a short period of copying files, the DCOM installation is complete.
 10. Setup detects and removes any previously installed Diskeeper software. (Any previous Diskeeper settings are not saved.)
 11. On a Windows 2000, Windows XP or Windows Server 2003 system, after Setup is complete, you can immediately start Diskeeper after clicking **Finish**.

6 Installation

On Windows 95/98/Me and Windows NT systems, you may be required to restart your computer before running Diskeeper.

12. To run Diskeeper, click the Windows **Start** button, select **Programs**, and then **Executive Software Diskeeper**.

After the Installation

Check for Update

The first time you run Diskeeper, it automatically checks to see if a more recent version of Diskeeper is available. If so, you are given the option to download and install the newer version. When the download screen is displayed, click **Run this program from its current location** to begin installing the update. Or, click **Save this program to disk** to save the Diskeeper update installation package on your computer for later installation. (To install an update stored on your computer in this manner, simply double-click the file you download and follow the instructions displayed.)

You can check for Diskeeper updates any time you want. Use the **Check for update** option in the Change your settings menu to see if a newer version of Diskeeper is available.

Registering Diskeeper

After the Diskeeper installation is complete, you may be given the option to register your Diskeeper purchase online. You can also register Diskeeper by mailing or faxing the registration card that comes with the CD.

Be sure to register your Diskeeper purchase to receive the free 90 days of telephone support included with Diskeeper.

About Windows Service Packs

Since Diskeeper uses mechanisms built into Windows NT, Windows 2000, Windows XP, and Windows Server 2003 that allow the safe movement of files on a disk that is actively being accessed by users, there is no need to upgrade Diskeeper each time you install a new Windows Service Pack upgrade.

Repairing Windows Systems

Performing an emergency repair of a Windows system can possibly change or disable certain system information or services, which may make it necessary to reinstall Diskkeeper after repairing your Windows system.

About the Diskkeeper Service

Diskkeeper is primarily designed as a “Set It and Forget It” disk defragmenter. In order to accomplish this goal, it creates a Windows service. The service allows Diskkeeper to run in the background while other applications are running. As long as your operating system is up and running, Diskkeeper can defragment your disks, whether you are logged on or not.

After installation, the Diskkeeper service starts automatically each time your computer is restarted. The Diskkeeper service runs all the time, whether or not defragmentation is occurring. This service consumes negligible system resources, and in most cases will never need to be disabled.

The Windows Application Event Log

When running under Windows NT, Windows 2000, Windows XP, and Windows Server 2003, Diskkeeper places messages in the Windows Application Event Log. By default, this log is 512 kilobytes in size (except on Windows Server 2003), and is set to overwrite events older than 7 days old. Diskkeeper can quickly fill the log file if these default settings are used. To prevent this, perform these steps to change the size and overwriting characteristics of the Application Event Log:

On Windows 2000 and Windows XP

1. Right-click the **My Computer** icon on your desktop and select **Manage**.
2. When the Computer Management Console is displayed, select **System Tools**, and then **Event Viewer**.
3. Expand the Event Viewer (by double-clicking it) and select **Application**.
4. Next, click the **Action** menu and select **Properties**.
 - a) Set the **Maximum log size** to **2048 KB**.
 - b) Enable the **Overwrite events as needed** option.
 - c) Click **OK**.

Diskkeeper allows you to specify what information is written to the Application Event Log. For more information, see *Windows NT/2000/XP/Server 2003 Event Log* on page 71.

8 Installation

On Windows NT 4.0

1. From the Windows NT **Start** button, choose **Programs**, then the **Administrative Tools** Program Group.
2. In the **Administrative Tools** Program Group, choose the **Event Viewer**.
3. In the **Event Viewer**, open the **Log** menu and choose the **Log Settings** option.
4. In the **Event Log Settings** dialog box, perform these steps:
 - a) Set the **Change Setting** to **Application Log**.
 - b) Set the **Maximum Log Size** to **2048** KB.
 - c) Enable the **Overwrite Events as Needed** option.
 - d) Click **OK**.

Event Logging under Windows 95/98/Me

When running on Windows 95/98/Me, Diskeeper provides the option of logging Diskeeper events into a text file. When Diskeeper logs an event, the event and its message are appended to the Diskeeper log file. These events are written as a text file, which can then be viewed with Notepad, or your choice of text editor programs.

The Diskeeper log file is named **DkEventLog.txt** and it is stored in the directory folder where Diskeeper is installed. The file is limited to 1 MB in size. When it reaches this size, the log is purged completely and the event log is started from scratch.

Remote Installation

Diskeeper can be installed simultaneously on multiple computers in a network, using Diskeeper Administrator Edition.

Remote installation can be a tremendous time saver for system administrators, especially on large networks, where they may have to install Diskeeper on hundreds, or even thousands of computers.

For more information on remotely installing Diskeeper, see *Appendix D*.

Uninstalling Diskeeper

To uninstall Diskeeper on Windows NT, Windows 2000, Windows XP, and Windows Server 2003 systems, you must be logged into an account that is a member of the Administrators group.

Note that the controls may have slightly different names, depending on your version of Windows.

Follow these steps to completely remove and uninstall Diskeeper from your computer:

1. From the **Control Panel**, double-click **Add/Remove Programs**. (On Windows 95/98/Me or Windows NT systems, click the **Install/Uninstall** tab.)
2. Highlight the **Diskeeper** entry.
3. Click **Remove** or **Add/Remove** (Windows 95/98/Me and Windows NT). This removes the Diskeeper program files from your computer. In most cases, the Diskeeper installation directory will not be removed.
4. On Windows 2000, Windows XP, or Windows Server 2003 systems, the Windows Disk Defragmenter is restored to the state it was in before Diskeeper was installed.
5. Manually delete the Diskeeper installation directory if it exists.

Note: If DCOM and/or the MMC have been installed on your computer, they will not be removed when Diskeeper is uninstalled.

Chapter 2

Getting Started

This chapter explains how to analyze the fragmentation on a disk volume, save the results, defragment the volume, and do a “before and after” comparison.

Introduction

Recent marketing research has shown that computer system performance and reliability are major concerns among system administrators. Disk fragmentation is a major cause of these performance and reliability problems. Diskeeper is designed to not only handle the fragmentation problem, but to give you information about the performance and reliability status of your disk volumes.

Keep in mind the primary purpose of a defragmenter is not to make your disks look “pretty”, but to improve the operating condition of your disk volumes. So while Diskeeper does provide a graphic view of your disks and any fragmentation found, more importantly, it shows you performance measurements and reliability data that you can apply to proactively keep your disk volumes in top shape.

Diskeeper performs a comprehensive analysis of the fragmentation on your disk volumes. After analyzing a disk, Diskeeper shows you the amount of performance improvement you will get by defragmenting the disk, and rates the reliability of the disk, based on the analysis results. Diskeeper also provides multiple methods by which to see the extent of the fragmentation—several graphic displays giving a graphic representation of the fragmentation on your volumes and a fragmentation report view showing statistical information about the fragmentation on your volumes.

After installing Diskeeper, you are ready to start Diskeeper and begin defragmenting your disk volumes. In order to see the actual gains from defragmentation, analyze the condition of your volumes before you begin defragmenting them. By reviewing the Diskeeper displays both before and after running Diskeeper, you will be able to see the actual reduction of file fragmentation and improvement in performance and reliability.

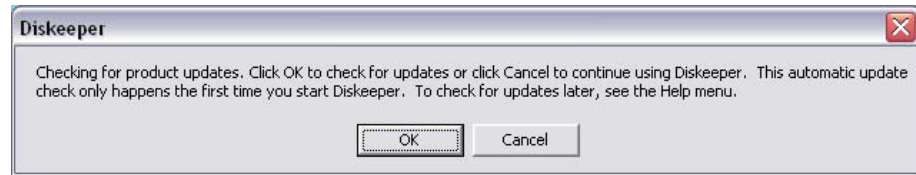
Quick Tour

When you start Diskeeper for the first time after a successful installation, you'll see this welcoming message:



Read the message—it contains simple instructions on how to start using Diskeeper. After you have read the message, you can prevent it from displaying in the future by clearing the check box in the bottom left corner. Click **OK** to continue.

After the Welcome screen is displayed, Diskeeper checks to see if a more recent version is available.



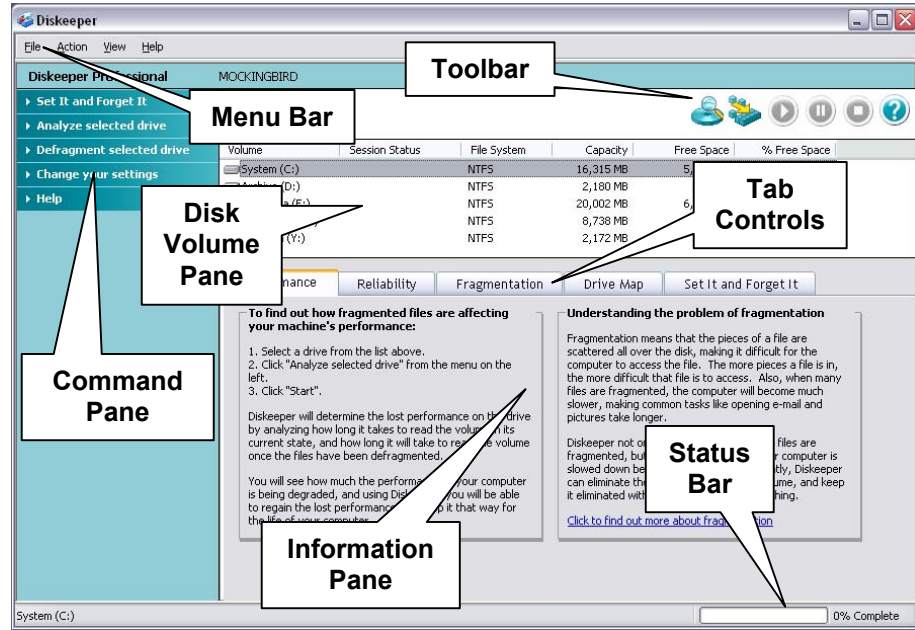
Click **OK** to check to see if an update is available for Diskeeper. (Note that you must have an active internet connection in order for Diskeeper to check for a more recent version.)

If a newer version of Diskeeper is available, you are given the option of downloading it. When the download screen is displayed, click **Run this program from its current location** to begin installing the update. Otherwise, click **Save this program to disk** to save the Diskeeper update installation package on your computer for later installation. (To install an update stored on your computer in this manner, simply double-click the file you download and follow the instructions displayed.)

You can also check for Diskeeper updates any time you want. Use the **Check for update** option in the Diskeeper **Help** menu.

14 Getting Started


After checking for updates, it's time to start learning about Diskeeper.



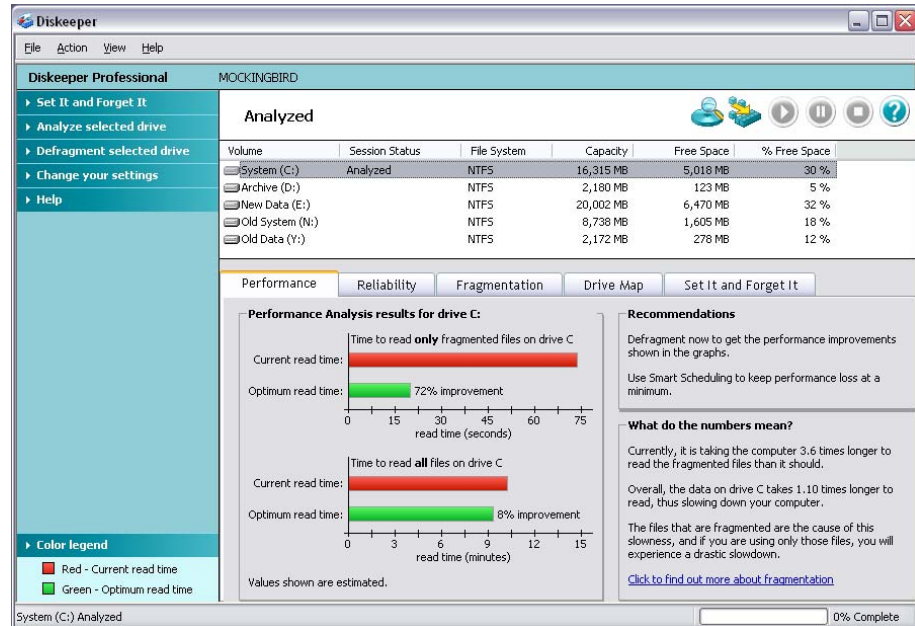
When you first start Diskeeper, the Performance tab pane is displayed. Like the other tab-controlled panes, this one gives quite a bit of information. This pane gives instructions for analyzing your drives, and also give you some background information about the effects of fragmentation.

Let's analyze a disk volume before we continue with the tour. Select a disk volume and click **Analyze selected drive**, then **Start** in the Command pane.



Tip: You can also use the Analyze button  to start the analysis of the selected disk.

After Diskeeper analyzes or defragments a disk volume, the Performance pane displays a graph showing the performance loss on that disk due to fragmentation. Here's an example after analyzing drive C:

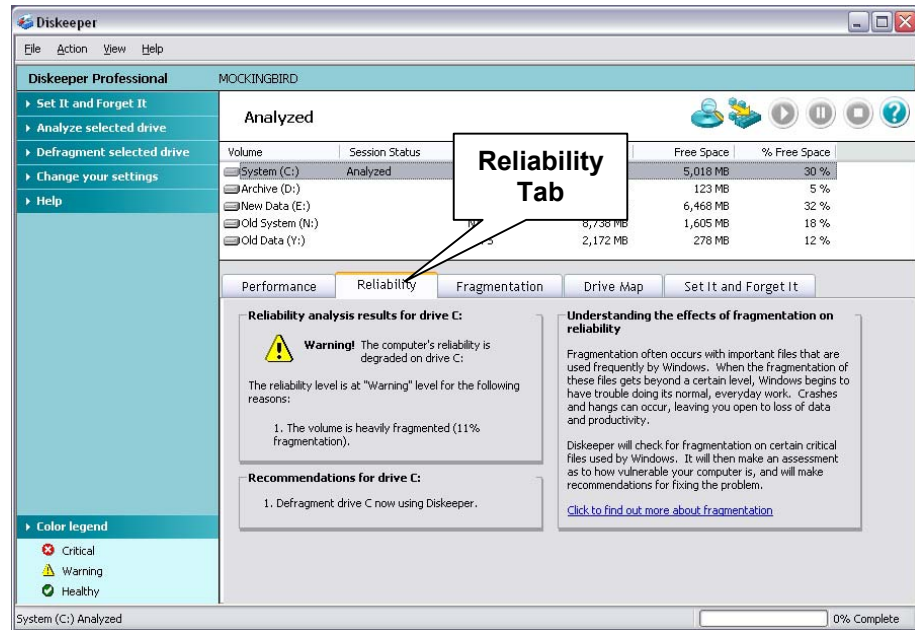


As you can see, the Performance pane now shows a performance analysis for drive C. The upper bar graph shows the current read times for only the fragmented files on the drive and the lower graph shows read times for all the files on the drive. The graphs also show the expected optimum read time for both cases, based on drive performance measurements. This view gives you a detailed picture of your disk performance losses due to fragmentation, and the expected improvement you will see after defragmentation.

It should be noted that the first performance analysis is based on pre-determined disk performance values measured as a part of disk performance research done by Executive Software. To get a more accurate performance measurement of your actual disks, Diskeeper must scan your drives to measure their performance. Since this measurement can briefly slow down your computer, this scan operation is disabled by default, but you can turn it on easily. The **Set performance data options** option is described in the **Change your settings** menu section on page 54.

16 Getting Started

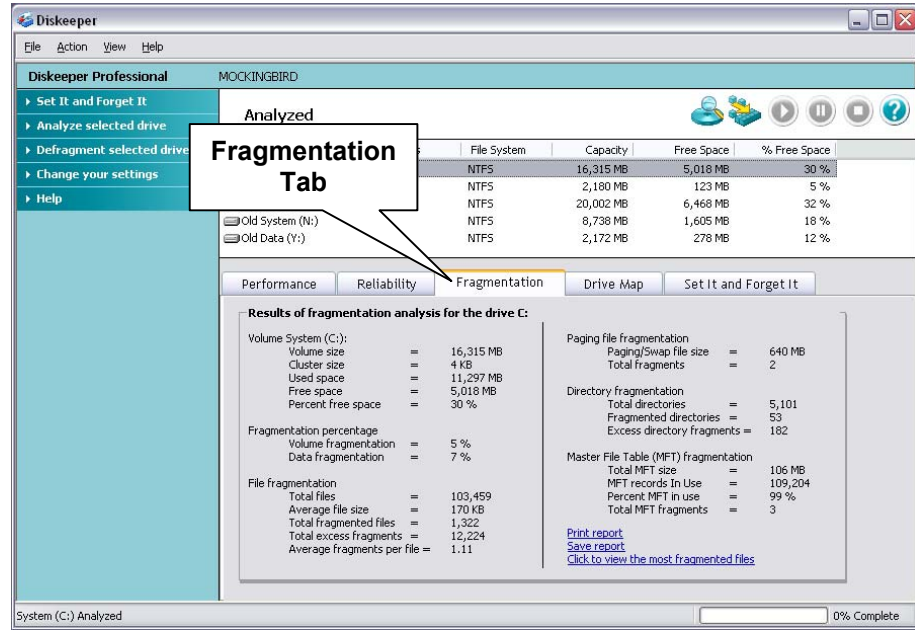
Now that we see how the performance of drive C is impacted by fragmentation, let's look at reliability issues. Click the **Reliability** tab to see the Reliability pane:



The Reliability pane gives a reliability analysis and rating, the reasons for that rating, and recommendations for improving or maintaining the reliability of the disk volume.

In this example, the reliability analysis for drive C shows a considerable amount of fragmentation, warranting a “Warning” rating. The ratings are based on several factors. You may see different conditions on your disks, such as too little free space or a badly fragmented paging file.

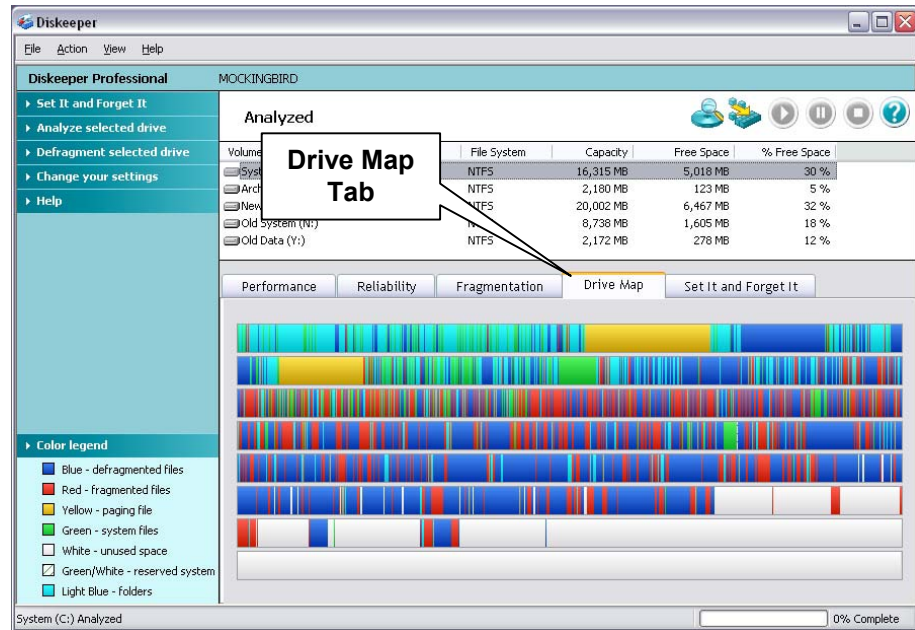
Next, click the **Fragmentation** tab to see the Fragmentation pane:



Useful information about the disk volume is shown in the Fragmentation pane. Note that most of the information here can also be recorded in the Diskeeper Event Log. For more information, see *Logging Diskeeper Activity* on page 69.

18 Getting Started


Now we'll look at a picture of the fragmentation on drive C. Click the **Drive Map** tab to open the Drive Map pane shown here:



The group of horizontal bars in the Drive Map pane gives a graphic representation of the fragmentation of your disk volume. The color legend in the Command pane shows what the colors in the display mean. Of particular interest in this example, the red areas show the fragmented files on the disk.

Next, let's defragment drive C and see what type of improvement Diskeeper can provide. Click **Defragment selected drive**, then **Start** in the Command pane to start the defragmentation process. (Notice that drive C is still selected)

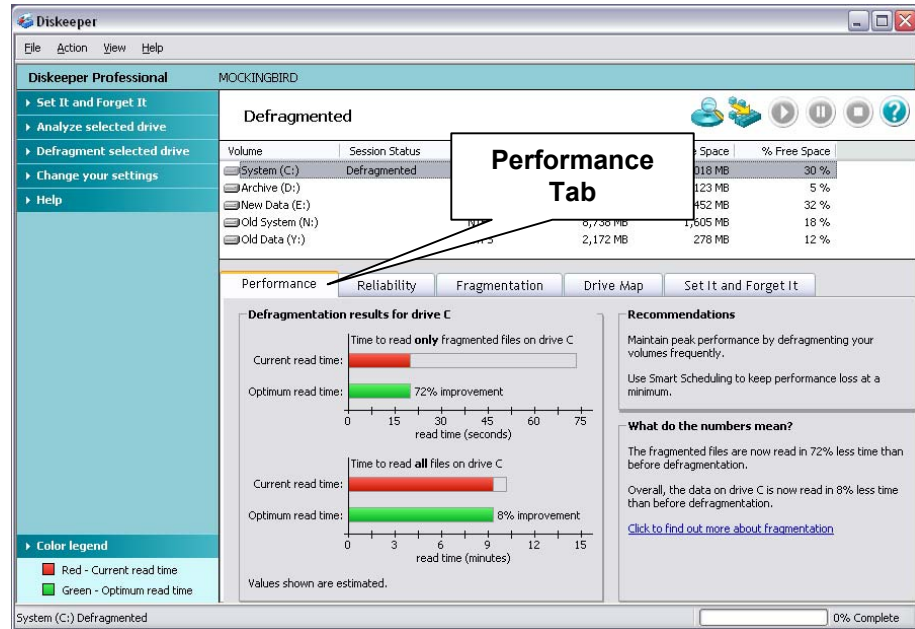


Tip: You can also use the Defragment button  to start defragmenting the selected volume.

You can watch the progress of the defragmentation if you keep the Drive Map pane open while Diskeeper is defragmenting your disk¹.

¹ Note that in order to provide the fastest defragmentation possible, the graphic drive map display is not available when the Terabyte Volume Engine (TVE) is used. Instead, the Drive Map pane shows numerical defragmentation information. The TVE is available in selected Server editions of Diskeeper. See Appendix A for a table showing the Diskeeper editions with TVE support.

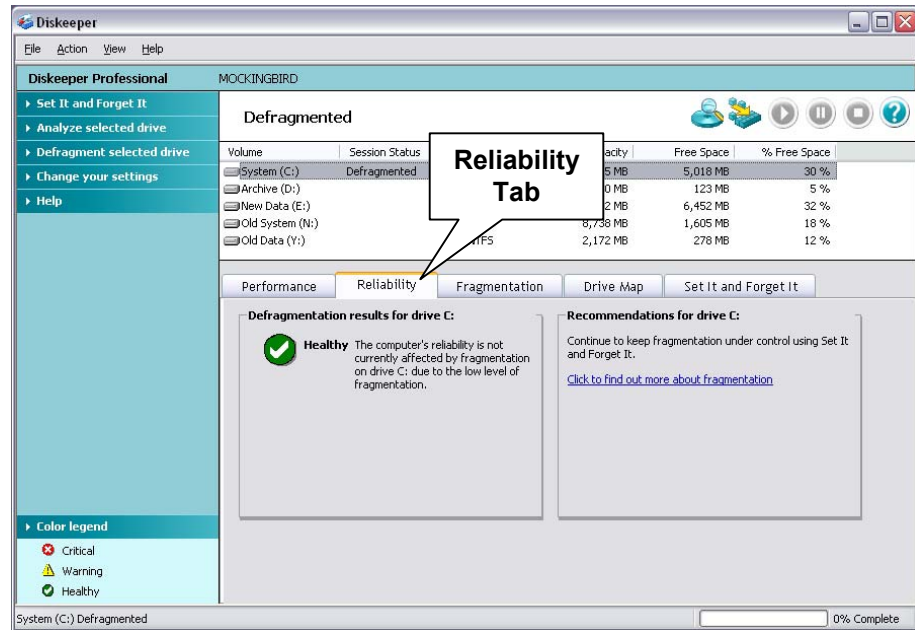
After the defragmentation is complete, it's time to see how Diskkeeper has improved the condition of the disk. Open the Performance pane by clicking the **Performance** tab. You will see a display similar to this:



In this example, you can see that defragmenting drive C has restored its performance back to the optimum level. The dotted lines in the graph display shows a good “before and after” picture of your drive's performance.

20 Getting Started

Next, check the reliability rating (or index) after defragmentation. Click the **Reliability** tab to open the Reliability pane. You'll see a display similar to this:



Now that drive C has been defragmented, its reliability index is “Healthy.”

A quick review of the Fragmentation pane and the Drive Map pane will also show improvement to the condition of the disk. Keep in mind that badly-fragmented disks may need more than one defragmentation run to completely handle the fragmentation problem.

Now, if you set up and start scheduled “Set It and Forget It” defragmentation jobs for your disk volumes, Diskeeper can maintain your disks in optimum condition automatically by running occasionally in the background without further intervention from you! For more information, see page 43.

Chapter 3

Overview of Diskeeper

This chapter provides important general information about Diskeeper.

Diskeeper Features

The following list summarizes the most important Diskeeper features:

Wide Array of Diskeeper Editions—Starting with version 8.0, the Diskeeper family of products has been expanded to offer specialized defragmentation of Windows operating systems ranging from Windows 95 through Windows Server 2003 Datacenter Edition. See the tables on page 87 for the complete Diskeeper lineup.

New Descriptive Interface—The Diskeeper interface has been completely redesigned to be more intuitive and informative. Common commands are grouped together in the Command pane, and a group of tabbed panes show you a wide variety of information. Diskeeper shows you the condition of your disks, and provides suggestions for improving or maintaining your disks.

Performance and Reliability Analysis—Diskeeper now collects and displays data regarding the performance and reliability of your disk volumes. This information allows you to be more proactive in the management and maintenance of your computers. See pages 30 and 33 for more information about the Performance pane and the Reliability pane.

Terabyte Volume Engine—A Diskeeper exclusive, the terabyte volume engine (TVE) is designed to efficiently defragment extremely large (larger than 100 GB) disk volumes. This feature is available in selected Diskeeper Server editions. The table on page 87 shows the Diskeeper editions with TVE support, and more information about the TVE is available on page 80.

Set It and Forget It Operation—Diskeeper is designed to operate without your intervention. Set a schedule for the times you want Diskeeper to run, then sit back and let Diskeeper take care of your disk fragmentation. Of course, you can also run Diskeeper manually. (But you probably have better things to do with your time—that's what Set It and Forget It is for!)

22 Overview of Diskeeper

Smart Scheduling[®]—This feature allows Diskeeper to automatically determine the optimum defragmentation schedule for each disk volume individually, and adjust that schedule as disk usage changes.

Selectable Run Priority—You can select the Windows priority at which Diskeeper defragmentation jobs run. Set the priority independently for both “Set It and Forget It” and “Manual Defragmentation” jobs.

Exclusion Lists—Diskeeper exclusion lists allow you to specify files and directories that will not be allowed to be processed by Diskeeper.

Event Logging—Diskeeper can record information about its activity in a log file. A wide variety of information can be saved for future reference.

Simultaneous Analysis or Defragmentation Operations—You can analyze and/or defragment more than one disk volume at a time. Different Diskeeper editions support different numbers of simultaneous operations. See page 87 for more information.

Boot-Time Defragmentation—Defragment files at boot-time that cannot be moved safely when Windows is running.

64-bit Processor Support—Diskeeper is compatible with 64-bit versions of Windows Server 2003.

Other Things to Know

- When running Diskeeper in the Set It and Forget It or Manual Defragmentation modes, you can run other tasks while defragmentation is occurring.
- When Diskeeper runs at higher priority levels, performance of other active processes will usually be affected.
- When Diskeeper runs at lower priority levels, defragmentation may take longer, since Diskeeper “backs off” for higher-priority processes, including screen savers.
- In the online mode, Diskeeper runs as a Windows Service and it optionally logs useful defragmentation information into either the Windows Application Event Log (under Windows NT, Windows 2000, Windows XP and Windows Server 2003) or to a text file (under Windows 95/98/Me).
- Diskeeper can be uninstalled in the standard manner using the Add/Remove Programs applet in the Windows Control Panel. For more information, see page 8.
- Due to limits built into the Windows NT/2000 file systems, in its online, Set It and Forget It and Manual Defragmentation modes, Diskeeper cannot defragment files on NTFS volumes with a cluster size greater than 4KB (4096


bytes). This limitation has been removed in Windows XP and Windows Server 2003, where Diskkeeper can defragment NTFS volumes with cluster sizes of up to 64 kilobytes. Note the boot-time defragmentation operations are not affected by this limit.




- You must be logged into an account that is a member of the Administrators group to run Diskkeeper on Windows NT, Windows 2000, Windows XP and Windows Server 2003 systems.
- Diskkeeper relies on both the Distributed Component Object Model (DCOM) and the Microsoft Management Console (MMC), both of which are available for Windows 95 and Windows 98. MMC is built into Windows 2000, Windows XP and Windows Server 2003. DCOM is built into Windows NT 4.0, Windows 2000 and Windows XP. For more information about DCOM and the MMC, see the *Glossary*.

Defragmentation Modes

Diskkeeper is designed to operate in three different ways. The “Manual Defragmentation” and “Set It and Forget It” modes run while your disk volumes are online and available to other users. The Boot-Time defragmentation mode runs only when you restart your computer².

Manual Defragmentation—Manual defragmentation gives you direct control over Diskkeeper operation. You have control over which disk volumes are defragmented, when defragmentation is started and stopped, and the priority at which manual defragmentation jobs run. You can also choose between different defragmentation methods, to emphasize system performance or defragmentation speed.

Highlight the disk volume of your choice, then click **Defragment**  in the Diskkeeper toolbar to do a manual defragmentation. (Alternatively, you can click **Defragment selected drive**, then **Start** in the Command pane, or right-click the highlighted disk volume and select **Defragment**.)

Click **Pause** , **Resume**  or **Stop**  in the Diskkeeper toolbar if you want to pause, resume or stop manual defragmentation at any time. These options are also available in the Action menu. For more information, see *Toolbar Buttons* on page 58.

Set It and Forget It—“Set It and Forget It” allows Diskkeeper to run automatically in the background, either after hours or while users and other processes are active on

² Boot-Time defragmentation is not available when running Diskkeeper on Windows 95/98/Me.

24 Overview of Diskkeeper

the system, according to a predetermined schedule you set. As with manual defragmentation jobs, you can select several different defragmentation methods to suit your needs. You can also use the Smart Scheduling option to allow Diskkeeper to automatically determine the optimum defragmentation schedule for your disk volumes.



Tip: Select **Set It and Forget It** from the Command pane to select from several commonly-used schedules.

This option is also available from the Action menu. For more information, see page 43.

Boot-Time Defragmentation—The Boot-Time defragmentation feature is useful for the occasional times when you need to defragment files that cannot be safely moved when Windows is running. Note that Boot-Time defragmentation is not available when running Diskkeeper on Windows 95/98/Me.

The Boot-Time option is accessed by clicking the **Change your settings** option in the Command pane then selecting **Set a boot-time defragmentation**. (Or, you can access this option from the Action menu.) Boot-Time defragmentation has three main parts:

- **Directory (Folder) Consolidation**—In Windows NT (and FAT volumes in Windows 2000, Windows XP and Windows Server 2003), a directory (or folder) is actually a file, which cannot be moved safely while the operating system is active. These directory files are usually scattered over the disk volume, presenting a barrier to effective defragmentation. Directory Consolidation, done at boot-time, before Windows starts up, moves directories together to a single location on the disk, which frees up larger portions of the disk for defragmenting.

In Windows 2000, Windows XP and Windows Server 2003, NTFS directories can safely be moved online, but FAT file system directories still need to be defragmented at boot-time.

- **Paging File Defragmentation**—The paging file is a file that the Windows NT, Windows 2000, Windows XP, and Windows Server 2003 operating systems use that cannot be defragmented safely while Windows is active, but it *can* be defragmented at boot-time, using the Boot-Time Paging File Defragmentation feature. For more information, see *Boot-Time Defragmentation* on page 59.
- **MFT Defragmentation**—The Master file Table (MFT) is another critical system file on NTFS volumes that cannot be defragmented safely while Windows NT, Windows 2000, Windows XP, and Windows Server 2003 are active, but it *can* be defragmented at boot-time, using the Boot-Time MFT Defragmentation feature. For more information, see *Boot-Time Defragmentation* page on 59.

Exclusion List

In some cases, you may have files or directory folders you do not want to defragment. For example, you may not want to defragment temporary files that will soon be deleted. Any files or directories can be excluded from Diskeeper processing by adding them to the exclusion list.

To use this feature, click **Change your settings** in the Command pane and select **Exclude selected files and folders**, or select the same option from the Action menu. For more information, see *Setting an Exclusion List* on page 65.

Priority

The default priority for scheduled Set It and Forget It defragmentation jobs is “Lowest.” while manual defragmentation jobs run at “Normal” priority. You can change the priority independently for both Set It and Forget It and manual defragmentation jobs. If you raise the priority, defragmentation runs tend to complete faster, but may also slow down the users on the system. Lowering the priority will have the opposite effect. Click **Change your settings** in the Command pane then select **Set defragmentation priority** to change the priority at which Diskeeper defragmentation jobs run. This option is also available in the Action menu. For more information, see *Setting Diskeeper Priority* on page 68.

Defragmentation Methods

Diskeeper allows you to choose the type of defragmentation that best suits your needs. Diskeeper provides defragmentation methods that emphasize:

- Maximum disk performance
- Quick defragmentation
- Improved free space consolidation

Click **Change your settings** in the Diskeeper Command pane then select **Set defragmentation method** to select the method Diskeeper uses for both manual and Set It and Forget It defragmentation jobs. This option is also available in the Action menu. For more information, see *Using Different Defragmentation Methods* on page 69.

Event Logging

Diskeeper allows you to record information about its activity in a log file. Click **Change your settings** in the Diskeeper Command pane then select **Set event logging options** to alternately enable or disable the logging of various events to the Diskeeper Event Log. The logging method varies, depending on the version of

Windows you are using. This option is also available from the Action menu. For more information, see *Logging Diskeeper Activity* on page 71.

Command Line Interface

Diskeeper can be run from the Windows command prompt. To defragment your local disk volume C:, for example, you would enter this at the command prompt:

diskeeper C:

Diskeeper informs you when the defragmentation starts and completes. Press CTRL+C if you want to stop Diskeeper before it completes the defragmentation run. The Diskeeper command line interface supports optional control parameters. See page 81 for more information about these options.

Getting the Most from Diskeeper

Diskeeper provides a variety of features, all of which are designed to help you get the best performance from your computer. While there are no “hard and fast” rules governing the use of Diskeeper, here are some general guidelines that will help you get the most from Diskeeper.

- When you first install Diskeeper, analyze all the disk volumes on your computer. This gives you good information about the extent of fragmentation on your computer.
- After you have analyzed your volumes, defragment them by running Diskeeper in its Manual Defragmentation mode. This provides the fastest method for defragmenting the files and free space on your volume. For more information on how to analyze and defragment manually, see page 11.
- If you are running Diskeeper on Windows NT, Windows 2000, Windows XP, or Windows Server 2003, you should next prepare for Boot-Time defragmentation to consolidate (move into one location) any disk directories that are scattered all over your volumes and to defragment MFTs and paging files. To do this, use the Diskeeper Boot-Time defragmentation feature. Since directories or paging files cannot be moved while your operating system is up and running, the Boot-Time defragmentation operation defragments the paging file and/or consolidates the directories on your volumes while your computer is booting. After running the Boot-Time operation once, regular online defragmentation by Diskeeper can help prevent the MFT and paging file from becoming fragmented again.

It is recommended you run the Boot-Time defragmentation operation on one disk volume at a time, because it can be time consuming and the computer cannot be used for any other purpose while the boot-time program is running.

- It is important to defragment your volumes before running the Boot-Time defragmentation in order to create a contiguous free space for your directories and/or paging files to be moved into. For more information, see *Boot-Time Defragmentation* on page 59.
- When your directories have been defragmented, schedule Diskeeper to run in the background in Set It and Forget It mode. Running in the Set It and Forget It mode, Diskeeper works quietly, keeping your disks in prime condition. You can even let Diskeeper establish the optimum defragmentation schedule for any of your disks, using the Smart Scheduling feature. For more information, see *Smart Scheduling* on page 46.

Chapter 4

Diskeeper Operation

This chapter describes how to operate Diskeeper.

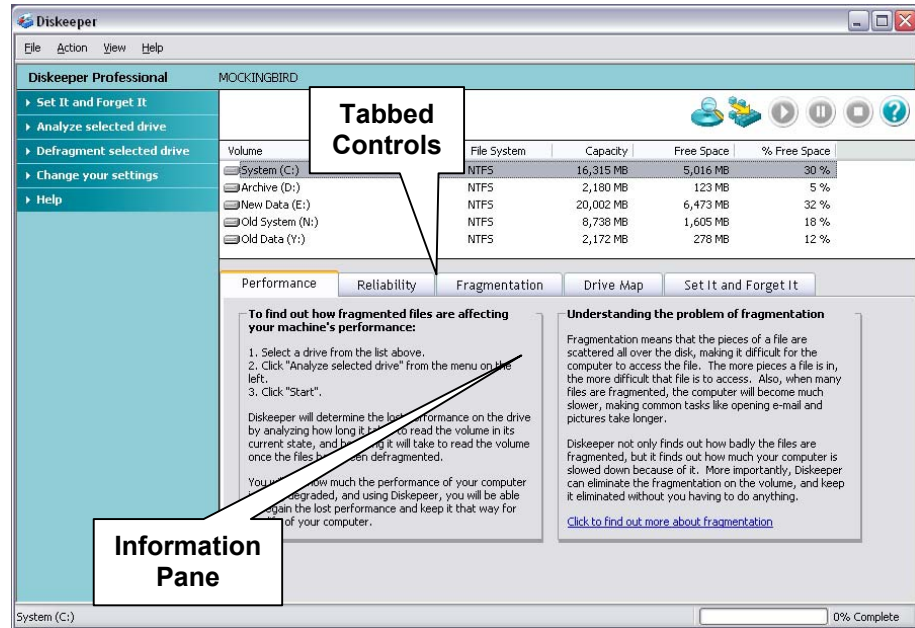
The Diskeeper Interface

As explained in Chapter 2, the Diskeeper user interface is made up of several distinct components. These are, in order of discussion:

- **Information Pane**—Shows information about your disks and lets you schedule defragmentation
- **Command Pane**—Quick and easy access to commonly-used Diskeeper features
- **Disk Volume Pane**—Shows all the detected disk volumes and information about them
- **Toolbar**—Another fast way to access common Diskeeper controls
- **Menu Bar**—Menu-based access to Diskeeper features
- **Status Bar**—Shows the status of any currently-running Diskeeper operations

Information Pane

The Information pane section of the Diskeeper display is the main “Operations Center” for Diskeeper. Each tab pane shows a different aspect of your disks’ condition, or controls when Diskeeper runs.



The Performance Pane

One of the main reasons for defragmenting a disk volume is to restore or maintain the performance of the disk. As files become more and more fragmented, it takes longer to read those files from the disk. Measuring the length of time it takes to read a set of files from a disk (known as read time) is a common way of determining the anticipated performance level of that disk.

Each time you analyze or defragment a disk, Diskeeper calculates the read time of the disk in two ways. First, it shows the predicted time to read all the files on the disk. Secondly, it shows the time to read only the fragmented files. Additionally, it determines the optimum (fastest) read time potential for the disk.

It should be noted that by default, the performance analysis is based on pre-determined disk performance values measured as a part of disk performance research done by Executive Software. To get a more accurate performance measurement of

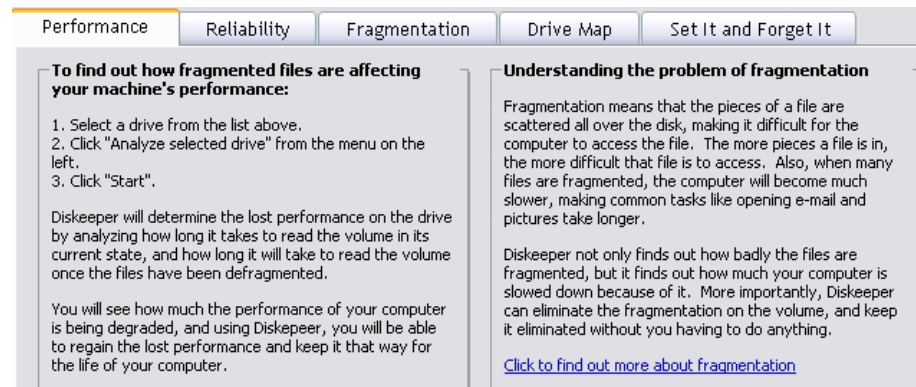
your actual disks, Diskeeper must scan your drives to measure their performance. Since this measurement can briefly slow down your computer, this scan operation is disabled by default, but you can turn it on easily. The **Set performance data options** option is described in the **Change your settings** menu section on page 54.

When you first start Diskeeper, the Performance pane gives instructions for analyzing your drives, and also give you some background information about the effects of fragmentation. After a disk has been analyzed or defragmented, the performance pane changes to show a graph illustrating the performance characteristics of the disk, based on current read times calculated by Diskeeper—both for all the files on the drive and for only the fragmented files on the drive. It also shows the expected optimum read time for all the files and for only the fragmented files. This view gives you a detailed picture of your performance losses due to fragmentation, and the expected improvement you will see after defragmentation.

The Performance pane displays information for a single disk volume at a time. The disk highlighted in the disk volume pane is the disk described in the Performance pane.

Using the Performance pane, you can see at a glance how much disk performance is being lost to fragmentation, and equally important, you can confirm that Diskeeper is keeping your disk performance at peak levels.

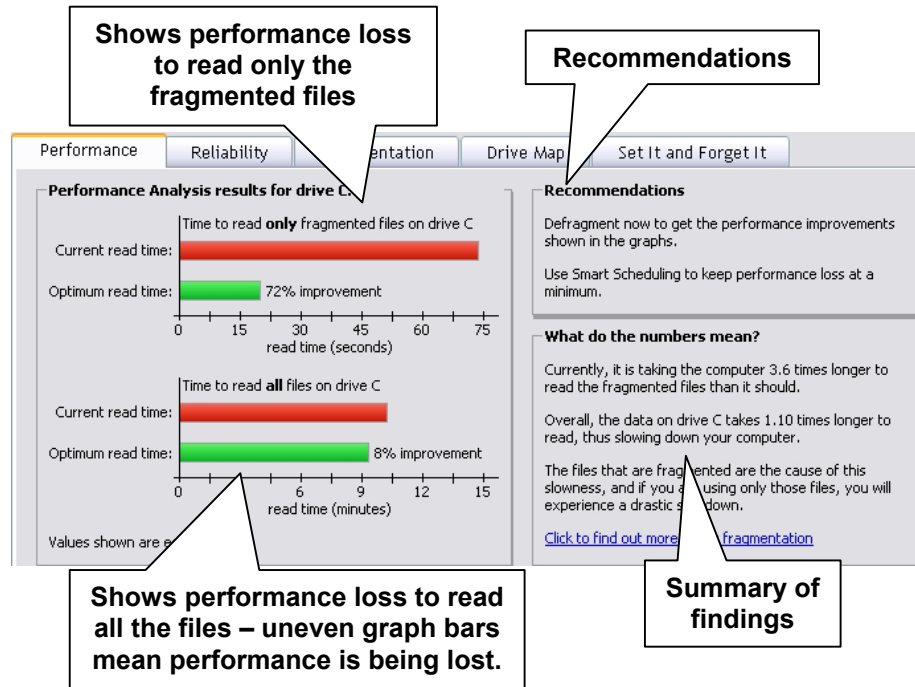
Here is an example of the Performance pane before running an analysis or defragmentation:



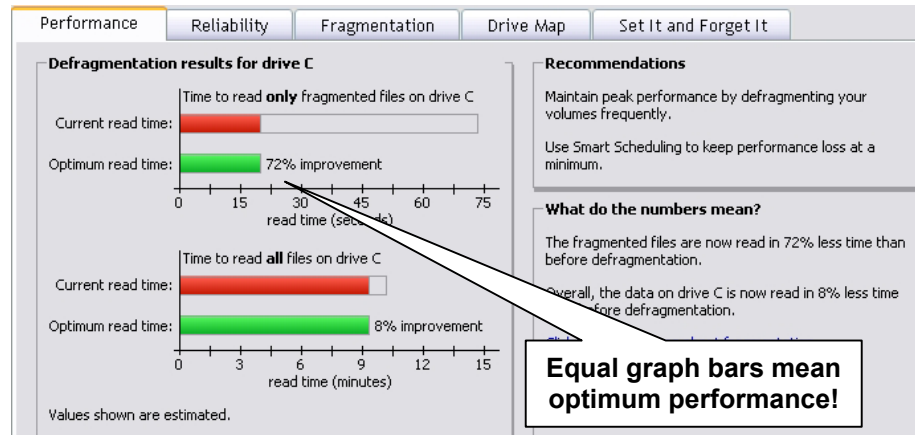
Read the screen—it tells you how to get started analyzing your disks, and explains the effects of fragmentation.

32 Diskeeper Operation

After you've analyzed a fragmented disk volume, the Performance pane takes on a new look. Here's an example:



After the fragmented disk has been defragmented by Diskeeper, the Performance pane helps show the real gain from defragmentation. Here's an example:



All the information on the Performance pane is dynamic—it changes based on the condition of the disk.

The Reliability Pane

The Reliability pane gives a reliability analysis and rating, the reasons for that rating, and recommendations for improving or maintaining the reliability of the disk volume.

Executive Software has done extensive research into the causes of disk performance and reliability problems. This research has shown these factors play a significant role in regards to disk performance and reliability:

- Overall fragmentation³
- MFT fragmentation
- Paging file fragmentation
- Available free space

Diskeeper uses these factors to determine a disk reliability index each time it analyzes or defragments a disk volume.

Disk reliability is rated into three categories—Healthy, Warning and Critical.

This table shows the Warning and Critical levels used in determining the reliability index.

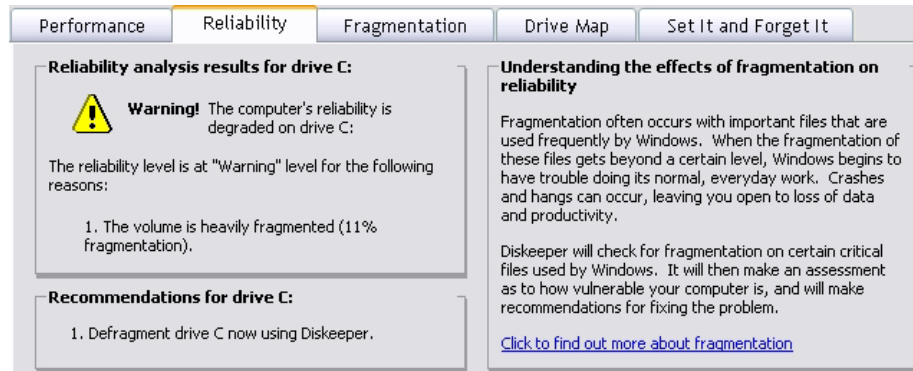
Reliability Factor	Warning Level	Critical Level
Overall Fragmentation	> 10% fragmentation	> 50% fragmentation
MFT Fragmentation	> 250 fragments	>2000 fragments
Paging File Fragmentation	> 250 fragments	>1500 fragments
Free Space	< 15% free space	< 5% free space

The Reliability pane displays information for a single disk volume at a time. The disk highlighted in the disk volume pane is the disk shown in the Reliability pane.

³ Overall fragmentation is calculated by dividing the time required to read the fragmented files on the volume by the time required to read all the files on the volume, and multiplying the result by 100.

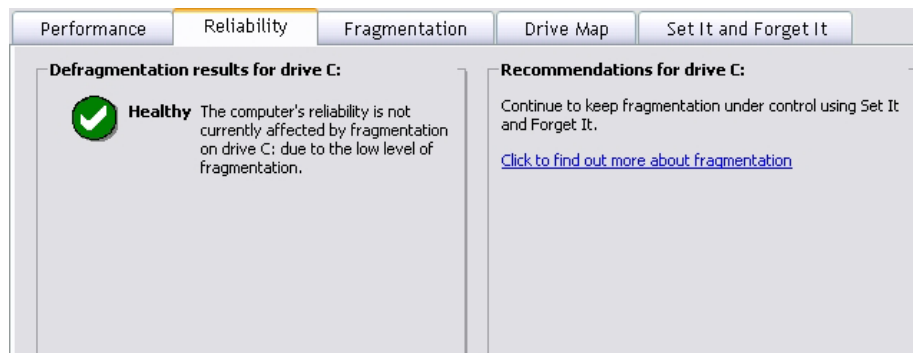
34 Diskeeper Operation

Here is an example of the Reliability pane view after analysis of a disk that needs corrective action:



After analyzing a disk, the Reliability pane shows reliability index and the reasons behind it, and offers suggestions for correcting any problems found. In this example, the reliability analysis for drive C shows a high fragmentation level, warranting a "Warning" rating.

Now here's an example of the Reliability pane after defragmentation, showing a disk in good condition:



Notice that after defragmentation, the Reliability pane again shows the reliability index, but it changes to show the current condition of the disk. Recommendations for maintaining the condition of the disk (or for further improvement, if necessary) are also shown.

Like the Performance pane, the information shown in the Reliability pane is dynamic, changing as the conditions on your disks change.

The Fragmentation Pane

The Fragmentation pane shows useful information about your disk volume after either analysis or defragmentation. Note that most of the information shown in the Fragmentation pane can also be recorded in the Diskeeper Event Log. For more information, see *Logging Diskeeper Activity* on page 71.

The Fragmentation pane displays information for a single disk volume at a time. The disk highlighted in the disk volume pane is the disk shown in the Fragmentation pane.

Here is an example of the Fragmentation pane after analyzing a disk volume:

Performance	Reliability	Fragmentation	Drive Map	Set It and Forget It
Results of fragmentation analysis for the drive C:				
Volume System (C:):				
Volume size	=	16,315 MB		
Cluster size	=	4 KB		
Used space	=	11,297 MB		
Free space	=	5,018 MB		
Percent free space	=	30 %		
Fragmentation percentage				
Volume fragmentation	=	5 %		
Data fragmentation	=	7 %		
File fragmentation				
Total files	=	103,459		
Average file size	=	170 KB		
Total fragmented files	=	1,322		
Total excess fragments	=	12,224		
Average fragments per file	=	1.11		
Paging file fragmentation				
Paging/Swap file size	=	640 MB		
Total fragments	=	2		
Directory fragmentation				
Total directories	=	5,101		
Fragmented directories	=	53		
Excess directory fragments	=	182		
Master File Table (MFT) fragmentation				
Total MFT size	=	106 MB		
MFT records In Use	=	109,204		
Percent MFT in use	=	99 %		
Total MFT fragments	=	3		
			Print report	
			Save report	
			Click to view the most fragmented files	

The Fragmentation pane shows this information:

Volume Section

Volume Size

This section of the Fragmentation pane or event log entry shows the total amount of space on the disk volume. This includes files and free space, as well as disk space used by the operating system (such as directory files and the Master File Table) but not reported in “Used Space.”

Cluster Size

This section of the Fragmentation pane or event log entry shows the cluster size for the volume. A disk cluster represents a number of disk sectors treated as a single unit. The entire disk is divided into clusters, each one a minimum increment of storage.

Used Space

This section of the Fragmentation pane or event log entry shows the total amount of disk space (in kilobytes) currently occupied by files. This does not include zero-length files, or certain files used by the operating system, such as directory files and the Master File Table.

Free Space

This section of the Fragmentation pane or event log entry shows the total amount of free space on the disk volume.

Percent Free Space

This section of the Fragmentation pane or event log entry shows the percentage of space on the disk volume that is free. This includes the free space in the area reserved for the Master File Table (MFT) on NTFS volumes.

Fragmentation Percentage Section

Volume Fragmentation

This section of the Fragmentation pane or event log entry shows the overall percentage of fragmentation on the disk volume.

The Volume fragmentation figure gives you an overall view of the fragmentation on your volume, by taking both the file fragmentation level and the free space fragmentation level into account. These two values are weighted depending on the ratio of free space to used space on the disk. The formula is:

$$\text{Fragmented space on the volume} * 100 / \text{Total space on the volume}$$

Where *Fragmented space on the volume* is the summed cluster count of all fragmented files times the bytes per clusters.

Data Fragmentation

This section of the Fragmentation pane or event log entry shows the percentage of file fragmentation on the disk volume.

File fragmentation is calculated like this:

$$\text{Volume Fragmentation} * \text{Total Space on the Volume} / \text{Used Space on the volume}$$

Note: The calculations are for both Data fragmentation and Volume fragmentation are done based on the uncompressed size of the files. If a volume has a large number of fragmented compressed files, these values can exceed 100%. This is similar to looking at files in Windows Explorer—if a large number of files are compressed, the total size of the data can exceed the volume size. This is why you can compare the

volume size in Disk Management to the total number of bytes on a volume, and they don't "add up".

File Fragmentation Section

Total Files

This section of the Fragmentation pane or event log entry shows the total number of files on the disk volume. This number does not include zero-length files or (in most cases) files less than one cluster in size on NTFS volumes. Files less than one cluster in size may be included, depending on the file size and the cluster size.

Average File Size

This section of the Fragmentation pane or event log entry shows the average size of all the files on the disk volume. This number does not include any zero-length files or paging files.

Total Fragmented Files

This section of the Fragmentation pane or event log entry shows the total number of fragmented files on the disk volume.

Total Excess Fragments

This section of the Fragmentation pane or event log entry shows the total number of file fragments on the disk volume. Contiguous files are not counted in this total, but each additional piece of any fragmented file *is* counted.

Average Fragments per File

This section of the Fragmentation pane or event log entry shows the average number of fragments per file on the disk volume. This is a good index of how fragmented the files on the volume are.

If the average fragment per file figure is 1.00, the files are contiguous. If the figure is 1.10, then 10% of the files, on average, are in two pieces. 1.20 means 20%, 1.30 means 30%, etc. A figure of 2.00 means the files average two fragments each. 1.00 is the best figure attainable, indicating that all files or nearly all files are contiguous.

Paging File Fragmentation Section

Paging/Swap File Size

This section of the Fragmentation pane or event log entry shows the size of the paging file (or swap file on Windows 95/98/Me systems) on the disk volume. This section displays zero when no paging file is present.

Total Fragments

This section of the Fragmentation pane or event log entry shows the number of fragments the paging file is broken into (if it exists on the disk volume).

Directory Fragmentation Section

Total Directories

This section of the Fragmentation pane or event log entry shows the total number of directories present on the disk volume.

Fragmented Directories

This section of the Fragmentation pane or event log entry shows the number of fragmented directories on the disk volume.

Excess Directory Fragments

This section of the Fragmentation pane or event log entry shows the total number of directory fragments on the disk volume. Contiguous directories are not counted in this total, but each additional piece of any fragmented directory is counted.

Master File Table (MFT) Fragmentation Section

Total MFT Size

This section of the Fragmentation pane or event log entry shows the size of the Master File Table (MFT).

Since the MFT is only used on NTFS volumes, this section is not displayed for FAT volumes in the text analysis display, and shows as zeros in the event log.

MFT Record Count

This section of the Fragmentation pane or event log entry shows the number of individual file records found in the Master File Table (MFT). This figure will not necessarily correspond with the number of files presently on the volume, since the file records remain in the MFT, even after a file is deleted.

Since the MFT is only used on NTFS volumes, this section is not displayed on FAT volumes.

Percent of MFT In Use

This section of the Fragmentation pane or event log entry shows the percentage of the Master File Table (MFT) in use.

The MFT grows as the number of files on the volume increases, but is not reduced in size when files are deleted from the volume.

Since the MFT is only used on NTFS volumes, this section is not displayed on FAT volumes.

Total MFT Fragments

This section of the Fragmentation pane or event log entry shows the number of fragments the Master File Table (MFT) is broken into.

Since the MFT is only used on NTFS volumes, this section is not displayed on FAT volumes.

Most Fragmented Files

Click the **...most fragmented files** link at the bottom of the Fragmentation pane to show a list of the most fragmented files on the disk volume. For each fragmented file listed, this option shows:

Fragments

Shows the number of fragments associated with the most fragmented files on your disk volume.

File Size

Shows the size of the most fragmented files on your disk volume.

File Name

Shows the names of the most fragmented files on your volume.

If these files are ones that users access frequently, the impact to your system performance may be worse than indicated by the Average Fragments per File figure.

In addition to the names of the most fragmented files, the Most Fragmented Files report also shows information explaining reasons why certain files were not moved or defragmented. The following “tags” may be added to specific filenames in the Most Fragmented Files listing:

Tag	Displayed After	File System	Description
[Cannot Open]	Defragmentation Only	NTFS and FAT	This file cannot be opened (and thus moved) by Diskeeper. This is often the result of the access controls (permissions) on the file being set to prevent Diskeeper from accessing it. File permissions must allow SYSTEM to have full control of a file in order for Diskeeper to defragment it.
[Excluded]	Defragmentation Only	NTFS and FAT	This file is listed on one of the Diskeeper exclusion lists. This can be either the user-specified exclusion list or the internal exclusion list.
[Excess Allocation]	Analysis and Defragmentation	NTFS Only	With the NTFS file system, a file can be allocated more clusters than its data is actually using. On Windows NT 4 and Windows 2000, only the data portion of the allocation can be defragmented. As a result, even though a file is reported as fragmented, the data portion of the file may in fact be contiguous. This most commonly occurs with registry files and (under Windows 2000) files that have been decompressed. In some cases, files of this type can be defragmented after a system restart
[Partially Defragmented]	Defragmentation Only	NTFS and FAT	This file has been partially defragmented. Its fragments have been reduced in number, but the file is not yet contiguous.

Tag	Displayed After	File System	Description
[Insufficient Contiguous Free Space]	Terabyte Volume Engine Defragmentation Only	NTFS Only	There was insufficient free space to defragment the file.
[Move refused by OS]	Terabyte Volume Engine Defragmentation Only	NTFS Only	Although Diskeeper requested the file move, the operating system denied the request. This can happen when free space previously located by Diskeeper is overwritten by other file activity, or if a file is deleted or extended during the defragmentation attempt.

Saving a Fragmentation Report

Click the **Save report** link at the bottom of the Fragmentation pane to save the fragmentation report to a text file. When you click the link, a dialog box is displayed allowing you to specify the name of the report and the location where you want to store it.

The saved report shows all the information available from the Fragmentation pane.

Printing a Fragmentation Report

Click the **Print report** link at the bottom of the Fragmentation pane to print the fragmentation report. When you click the link, a dialog box is displayed allowing you to specify the printer on which you want to print the report.

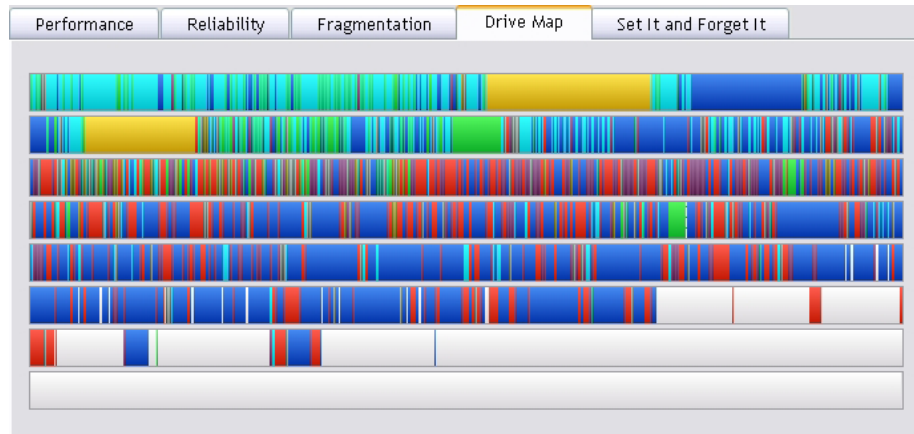
The printed report shows all the information available from the Fragmentation pane.

Drive Map Pane

The Drive Map pane gives an overall view of the fragmentation on your disk volume. See below for an example of a typical Drive Map pane display. (This example shows a moderately fragmented volume).

42 Diskeeper Operation

The Drive Map pane displays information for a single disk volume at a time. The disk highlighted in the disk volume pane is the disk reflected in the Drive Map pane.



What the Colors Mean

The group of horizontal bars in the Drive Map pane gives a graphic representation of the fragmentation of your disk volume. The colors of the display indicate the type and condition of the data on your volume.

- Green areas show unmovable system files. On Windows NT, Windows 2000, Windows XP, and Windows Server 2003 systems, green areas particularly show the Master File Table (MFT), but also several other unmovable files. These files cannot be moved safely by Diskeeper (or any other defragmenter), except at boot-time. Keep in mind, however, although these areas are referred to as “system files”, these are not the files that make up the operating system (which Diskeeper can successfully defragment online). Instead, they make up the NTFS file system. The green areas of the display appear only on NTFS volumes.
- Green-striped areas (on Windows NT, Windows 2000, Windows XP, and Windows Server 2003 systems only) show space on the volume reserved for expansion of the MFT. This space is reserved when a volume is formatted, and cannot be used by applications, including Diskeeper. However, the operating system will write files to this area when the volume becomes extremely full and no other free space is available. Windows provides the capability for Diskeeper to move files out of this reserved area, but does not allow Diskeeper to move files into it. These areas appear only on NTFS volumes.
- Yellow areas show the paging file (for Windows NT, Windows 2000, Windows XP, and Windows Server 2003) or the swap file (for Windows 95/98/Me) if it exists on the volume.
- Light blue areas show the directory folders on the volume (and their fragments).

- Red areas show fragmented files.
- Dark blue areas show contiguous (non-fragmented) files.
- White areas show free space on the volume.

Set It and Forget It Pane

The “Set It and Forget It” feature allows Diskeeper to run automatically in the background while users and other processes are active on the system. The Set It and Forget It pane shows the details about any schedules you have set, and it’s where you set custom defragmentation schedules for your disk volumes.

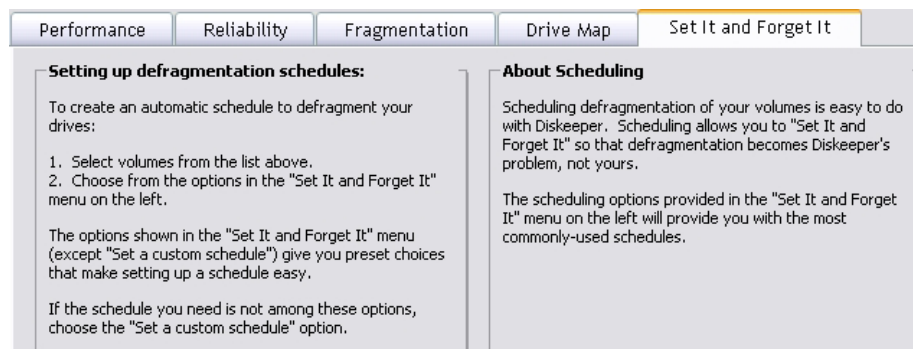
A defragmentation schedule specifies the times or days of the week that Diskeeper will (or will not) be allowed to run. You can specify separate defragmentation schedules for individual disk volumes, or you can create a single schedule for more than one volume.

Click the **Set It and Forget It** option in the Command pane to pick from one of several commonly-used schedules, or to create a custom schedule of times when “Set It and Forget It” defragmentation jobs will be forced to run (or times they will not be allowed to run). When you click the **Set It and Forget It** option, the Set It and Forget It pane is displayed.

Schedules only affect “Set It and Forget It” defragmentation jobs. Any active defragmentation job previously started on a disk volume will complete. After it completes, the new schedule takes effect.

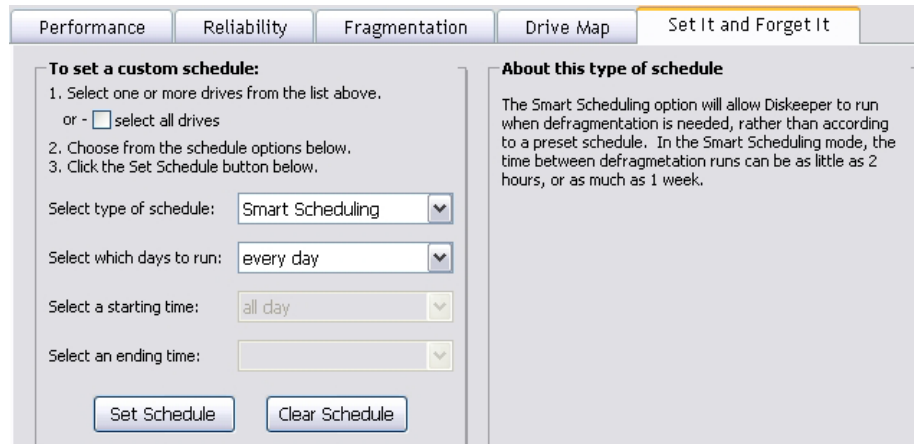
When you use the Set It and Forget It pane, always select one or more volumes in the disk volume pane before clicking any of the other Set It and Forget It controls. You can select more than one volume by holding the CTRL key while clicking on the volumes listed in the disk volume pane.

Here is an example of the Set It and Forget It pane when you first start Diskeeper:

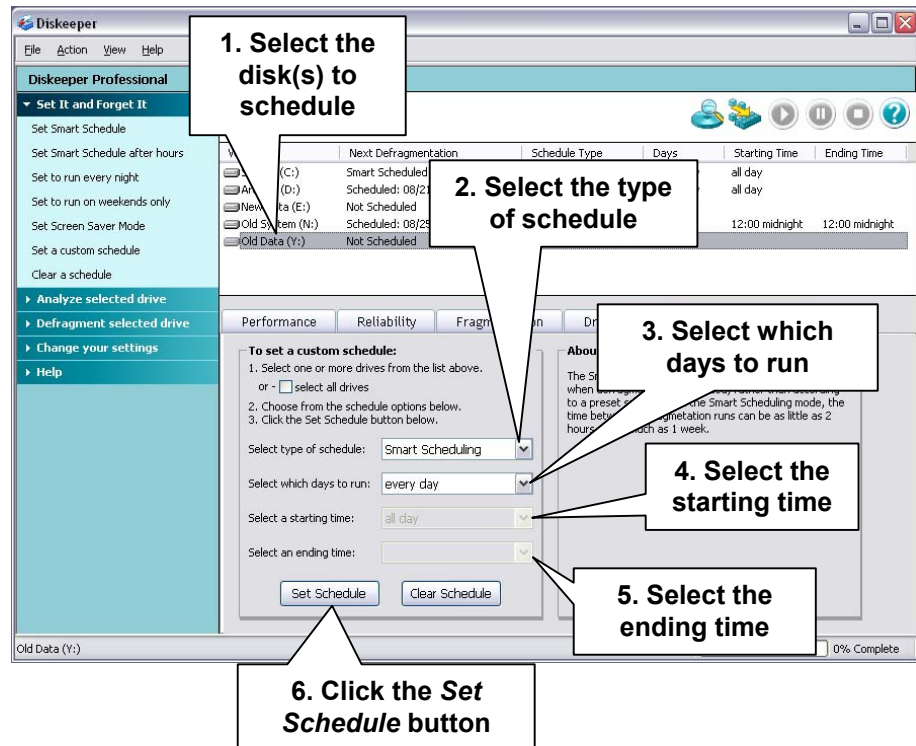


44 Diskeeper Operation

And here's an example after choosing the **Set a custom schedule** option from the Set It and Forget It menu:



Setting a custom schedule for one or more disks is easy. Here are the basic steps after clicking **Set It and Forget It** in the Command pane and selecting **Set a custom schedule**:



The following controls are available in the Set It and Forget It pane:

Select type of schedule

Use this section of the Set It and Forget It pane to specify how often Diskeeper should run on the selected disk volumes. You can specify any of these run frequencies:

One Time
Continuously
Every 2 hours
Every 4 hours
Every 8 hours
Every 12 hours
Every 24 hours
Every 48 hours
Every 72 hours
Smart Scheduling (see the description of Smart Scheduling later in this chapter)
Screen Saver (see the description of Screen Saver mode later in this chapter)

Select which days to run

Use this section of the Set It and Forget It pane to specify days the Diskeeper job will (or will not) be allowed to run on the selected volumes. You can specify any of these time periods to control when Diskeeper is allowed to run:

Everyday	Except Everyday
Weekends	Except Weekends
Weekdays	Except Weekdays
Mondays	Except Mondays
Tuesdays	Except Tuesdays
Wednesdays	Except Wednesdays
Thursdays	Except Thursdays
Fridays	Except Fridays

46 Diskeeper Operation

Saturdays	Except Saturdays
Sundays	Except Sundays

Select a starting time

Use this section of the Set It and Forget It pane to specify the beginning of a time period the Diskeeper job will (or will not) be allowed to run on the selected volumes. You can specify any of these time periods to specify the beginning of a Diskeeper schedule period:

All Day

12:00 midnight through 11:00 P.M., in one hour increments

Select an ending time

Use this section of the Set It and Forget It pane to specify the end of a time period the Diskeeper job will (or will not) be allowed to run on the selected volumes. You can specify any of these time periods to specify the end of a time period Diskeeper will (or will not) be allowed to run:

12:00 midnight through 11:00 P.M., in one hour increments

Set Schedule

Click **Set Schedule** to accept the specified run schedule for the selected volumes. You must click **Set Schedule** for each schedule you specify.

Any defragmentation job previously started on a volume will complete the current run through the volume before the new schedule takes effect.

Clear Schedule

Click **Clear Schedule** to clear the currently active Set It and Forget It defragmentation schedule on the selected volumes. If Diskeeper is in the process of defragmenting a volume at the time the **Clear Schedule** button is clicked, it will run to completion.

Smart Scheduling

With Smart Scheduling, you no longer have to decide how often to defragment your disks—Diskeeper will automatically determine the optimum defragmentation schedule for each of your disk volumes and adjust it accordingly.

The method used to determine how often Diskeeper should run is elegant in its simplicity. When Smart Scheduling is enabled, Diskeeper keeps track of the number of files moved every time it runs on each disk volume. When the number of fragmented files moved during a defragmentation run increases, Diskeeper is

automatically scheduled to run more often. When the number of files moved decreases, the time between defragmentation runs is increased.

The Smart Scheduling option is available within the **Select type of schedule** drop-down list in the Set It and Forget It pane.

You can also set exclusion times when the Smart Scheduling option will be prevented from scheduling a defragmentation run. When Smart Scheduling is selected, the **Select which days to run** drop-down option list will be limited to these times:

- Except Everyday
- Except Weekends
- Except Weekdays
- Except Monday
- Except Tuesday
- Except Wednesday
- Except Thursday
- Except Friday
- Except Saturday
- Except Sunday

You can use the “starting” and “ending” time drop down lists to further define times when the scheduling of automatic defragmentation runs will not be allowed. For example, a schedule set like this:

Type of Schedule	Which Days
Smart Scheduling	Except Weekdays
Starting Time	Ending Time
1:00 am	3:00 am

will allow Diskeeper to automatically determine how often to run, but will also prevent it from running between 1:00 am and 3:00 am on weekdays (i.e., when your nightly backup is running).

48 Diskeeper Operation

Here's another example, showing a Smart Schedule that will run everyday, but only between the hours of 7:00 pm and 7:00 am:

Type of Schedule	Which Day
Smart Scheduling	everyday
Starting Time	Ending Time
7:00 pm	7:00 am



Tip: The **Set It and Forget It** option on the Command pane includes several commonly-used defragmentation schedules, pre-configured and ready to use. See page 50 for more information about the Set It and Forget It option in the Command pane.

Screen Saver Mode

When enabled, Screen Saver mode automatically starts defragmenting the selected disk volume(s) any time the screen saver starts on your computer. The defragmentation operation is paused whenever keyboard or mouse activity is detected on the computer. This option is available under the **Select type of schedule** drop-down list in the Set It and Forget It pane. Note that you must have a screen saver enabled for this option to function.

If you only have a single disk volume selected for Screen Saver mode, the defragmentation operation is re-started at the logical "beginning" of the volume each time the screen saver re-starts after being interrupted (by keyboard activity, for example).

When more than one disk volume is selected for Screen Saver mode, the volumes are handled in a round-robin manner. If a defragmentation pass is stopped, the operation resumes on the next volume when the screen saver starts again. For example, if you select volumes C and D for Screen Saver mode, when your screen saver starts, Diskeeper begins a defragmentation pass on volume C. If that pass is interrupted, and then the screen saver starts again, Diskeeper will begin a pass on volume D.

If the screen saver has not been interrupted after Diskeeper completes the defragmentation pass on each of the selected disk volumes, Diskeeper is automatically scheduled to re-start the defragmentation operation in one hour.

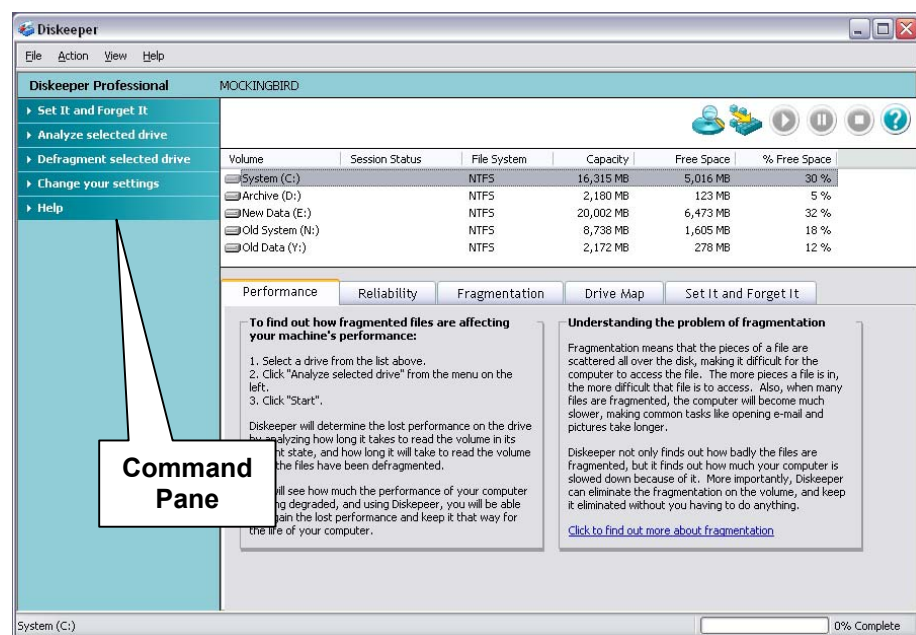
Because of the "start and stop" nature of the Screen Saver mode, it is not recommended on disk volumes that are heavily fragmented, unless you expect the

computer's screen saver to be on for several hours. In cases where your screen saver activity is only for short periods of time, a thorough manual defragmentation or scheduled Set It and Forget It defragmentation should be performed before running Diskeeper in Screen Saver mode.

Note: Screen Saver mode is not recommended for servers. Many servers spend a good deal of time with the screen saver active, which could cause Diskeeper to run more often than necessary. This can cause unnecessary system resource use on the server at times when it is under heavy demand.

Command Pane

The Command pane is where you'll find easy access to the commonly-used Diskeeper features, as well as several shortcuts for performing common tasks.



The Command pane is made up of these parts:

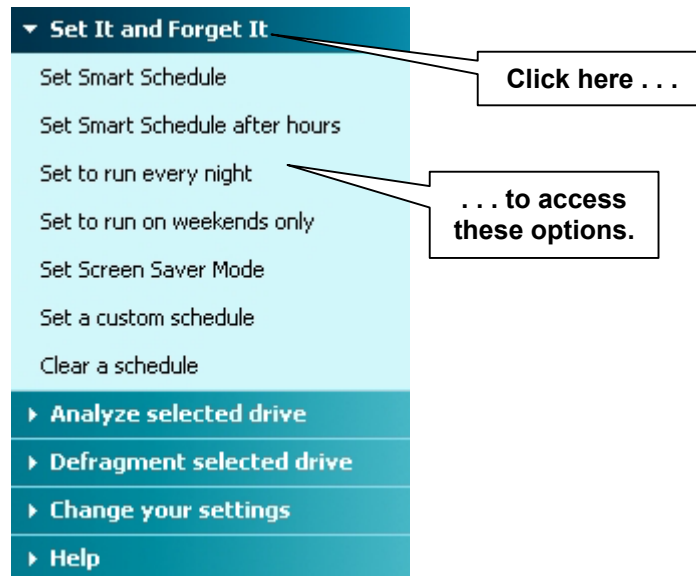
- **Set It and Forget It Menu**—Gives you several pre-configured defragmentation schedules with just a few mouse clicks, or gives you the option to create your own custom schedules
- **Analyze Selected Drive**—Start the analysis of the drive selected in the disk volume pane

50 Diskeeper Operation

- **Defragment Selected Drive**—Start the manual defragmentation of the drive selected in the disk volume pane
- **Change Your Settings Menu**—Change Diskeeper settings
- **Help Menu**—Get help about using Diskeeper

Set It and Forget It Menu

Click the **Set It and Forget It** menu in the Command pane to expand it and reveal the different options available. Here's an example:



Set Smart Schedule

Use this option to quickly set a Smart Schedule for any selected disk(s) in the disk volume pane. A Smart Schedule lets Diskeeper automatically determine when it should run on each disk. See page 50 for more information about Smart Scheduling.

Set Smart Schedule after hours

Similar to the Smart Scheduling option above, this option also quickly sets a Smart Schedule for any selected disk(s). However, this specialized schedule will only run after normal office hours. When set, this schedule will only allow defragmentation to run between 10:00 pm and 4:00 am. Keep in mind though, since this is a Smart Schedule, Diskeeper will only run as often as necessary to keep fragmentation minimized on the chosen disks.

Set to run every night

Use this option to quickly set a schedule that runs every 2 hours, but only between the hours of 10:00 pm and 4:00 am, for any selected disk(s) in the disk volume pane.

Set to run on weekends only

Use this option to quickly set a Smart Schedule, which runs only on Saturday and Sunday, for any selected disk(s) in the disk volume pane.

Set Screen Saver mode

Use this option to quickly set defragmentation to run only when the screen saver is active on your computer. Like the other options in the Set It and Forget It menu, when clicked, this option is set for any selected disk(s) in the disk volume pane. See page 48 for more information about Screen Saver mode.

Set a custom schedule

Use this option to set a custom schedule for any selected disk(s) in the disk volume pane. You can set the days and times when Diskeeper will (or will not) be allowed to run. See page 43 for more information about creating a custom schedule.

Clear a Schedule

Use this option to clear a previously-set schedule for any selected disk(s) in the disk volume pane. This option removes any schedule set for the selected volume(s), but any ongoing defragmentation jobs will continue until completion.

If you need to stop (but not clear) a scheduled defragmentation job when it is running, simply highlight the volume in the disk volume pane and click the **Stop** button in the toolbar.

Analyze Selected Drive


This option on the Command pane is self-explanatory—select a disk in the disk volume pane, then click **Analyze selected drive**, then **Start** in the Command pane to see the extent of fragmentation on the disk. After the analysis is complete, click the different tab controls in the Information pane to see the condition of the disk.

The screenshot shows the Diskeeper Professional interface. On the left, the Command pane has a section for 'Analyze selected drive' with buttons for Start, Stop, Pause, and Resume. The main window displays a table of analyzed disk volumes:

Volume	Session Status	File System	Capacity	Free Space	% Free Space
System (C:)	Analyzed	NTFS	16,315 MB	5,018 MB	30 %
Archive (D:)					5 %
Data (E:)					12 %
Old Data (F:)					8 %
Old Data (G:)		NTFS	2,172 MB	278 MB	12 %

Below the table, there are tabs for Performance, Fragmentation, and Drive Map. The Performance tab is active, showing a graph of read time (seconds) and a bar chart indicating a 72% improvement. A callout points to the 'Start' button in the Command pane. Another callout points to the 'Performance' tab. A third callout points to the 'Analyze selected drive' button. A fourth callout points to the 'Start' button in the Command pane.

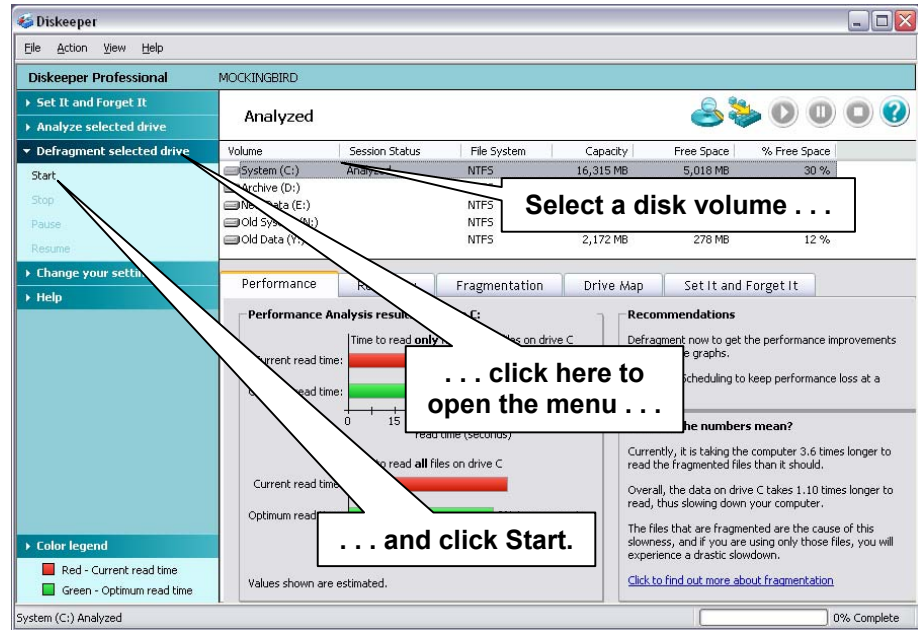




Tip: You can also use the Analyze button  to start the analysis of the selected disk.

When you are analyzing a disk, the Command pane displays options to **Pause**, **Resume** or **Stop** the analysis. You can also perform these functions with the equivalent toolbar buttons.

Defragment Selected Drive

This option on the Command pane is also self-explanatory—select a disk in the disk volume pane, then click **Defragment selected drive** in the Command pane to run a manual defragmentation job on the disk. After the defragmentation is complete, click the different tab controls in the Information pane to review the condition of the disk.



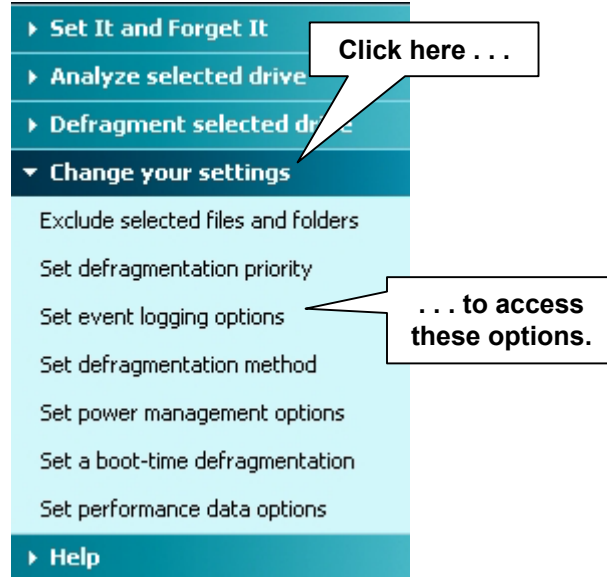
 **Tip:** You can also use the Defragment button  to start defragmenting the selected volume.

When you are defragmenting a disk, the Command pane displays options to **Pause**, **Resume** or **Stop** the defragmentation. You can also perform these functions with the equivalent toolbar buttons.

Change Your Settings Menu

Click the **Change your settings** menu in the Command pane to expand it and reveal the different options available.

Here's an example:



Exclude selected files and subfolders

Diskeeper allows you to specify files and directory folders that you do not want moved. Click this option in the **Change your settings** menu to create or modify an exclusion list.

This option is also available from the Action menu. For more information about exclusion lists, see *Setting an Exclusion List* on page 65.

Set defragmentation priority

You can select the Windows priority at which Diskeeper defragmentation jobs run. Click this option in the **Change your settings** menu to set the priority for both “Set It and Forget It” and “Manual Defragmentation” jobs.

This option is also available from the Action menu. See *Setting Diskeeper Priority* on page 68 for more information about setting the Diskeeper priority.

Keep in mind—when Diskeeper runs at higher priority levels, performance of other active processes will usually be affected.

Set event logging options

Diskeeper allows you to record information about its activity in a log file. Click this option in the **Change your settings** menu to alternately enable or disable the logging of various events to the Diskeeper Event Log. The logging method varies, depending on the version of Windows you are using.

This option is also available from the Action menu. For more information, see *Logging Diskeeper Activity* on page 69.

Set defragmentation method

With Diskeeper, you can choose the type of defragmentation that best suits your needs. Diskeeper provides defragmentation methods that emphasize:

- Maximum disk performance
- Quick defragmentation
- Improved free space consolidation

Click this option in the **Change your settings** menu to select the method Diskeeper uses for both manual and Set It and Forget It defragmentation jobs.

This option is also available in the Action menu. For more information, see *Using Different Defragmentation Methods* on page 69.

Set power management options

This option is intended for users of laptop or portable computers. When enabled, this option prevents Diskeeper from running when the computer switches to battery power. Click this option in the **Change your settings** menu to enable or disable this option.

This option is also available in the Action menu. For more information, see *Using Power Management* on page 70.

Set a boot-time schedule

Use the option to set up the defragmentation of files that can only be moved safely at boot-time, before Windows up and is running. See page 59 for full information about running boot-time defragmentation.

Set performance data options

Use this option to enable or disable the scanning your disk drives to gather disk performance data. When enabled, the scan runs one time on each disk volume detected, and runs any time a new disk volume detected on your computer. This option is disabled by default.

Diskeeper uses the data gathered during the performance data scan to measure the performance of each of your disk drives. It uses this information to determine how

56 Diskeeper Operation

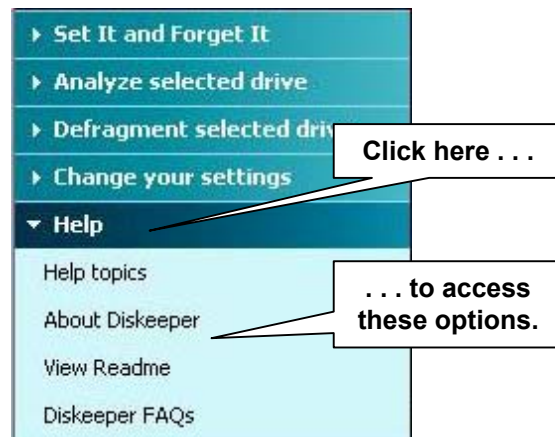
much performance you are losing due to fragmentation, and shows the results in the Performance pane when you run an analysis or defragmentation.

Allowing this scan to take place improves the accuracy of the performance data displayed by Diskeeper after the analysis or defragmentation of a disk. When this option is disabled, Diskeeper uses default disk performance values when calculating your performance loss due to fragmentation.

This performance scan may take as much as 1 to 10 minutes per volume to perform an accurate scan and may temporarily slow down your computer, but only while the scan is running.

Help Menu

Click the **Help** menu in the Command pane to expand it and see the different options available. Here's an example:



Help Topics

Click this option to open the main Diskeeper Help system. The Diskeeper Help provides quick access to useful information about Diskeeper.

About Diskeeper

Click this option to see information about the specific version and build number of the Diskeeper version installed on your computer.

View Readme

Click this option to read the Diskeeper **Readme.txt** file. This file contains the most current information about the version of Diskeeper installed on your computer, and gives information that may not be included in the other published documentation. The Diskeeper Readme file contains late-breaking information that could not be

included in other published documentation like this manual or the Diskeeper Help system.

Diskeeper FAQs

Click this option to see to a list of Frequently-Asked Questions (FAQs) about Diskeeper, and the answers to them.

Check for update

Click this option to check for a more recent version of Diskeeper. If a newer version of Diskeeper is available, you are given the option of downloading it. When the download screen is displayed, click **Run this program from its current location** to begin installing the update.

Otherwise, click **Save this program to disk** to save the Diskeeper update installation package on your computer for later installation. (To install an update stored on your computer in this manner, simply double-click the file you download and follow the instructions displayed.)

Disk Volume Pane

The disk volume pane section of the Diskeeper display shows all the supported disks detected on your computer.

Volume	Session Status	File System	Capacity	Free Space	% Free Space
System (C:)	Defragmented	NTFS	16,315 MB	5,018 MB	30 %
Archive (D:)		NTFS	2,180 MB	123 MB	5 %
New Data (E:)		NTFS	20,002 MB	6,452 MB	32 %
Old System (N:)		NTFS	8,738 MB	1,605 MB	18 %
Old Data (Y:)		NTFS	2,172 MB	278 MB	12 %

The disk volume pane is a quick way to see:

- Volume letter and name
- Session status (shows what Diskeeper is doing or has done on the volume)
- File system on the volume
- Capacity of the volume
- Free space available on the volume
- Percentage of volume size that is free space

When you are viewing the Set It and Forget It pane, the columns in the disk volume pane change to show different information:

58 Diskeeper Operation

Volume	Next Defragmentation	Schedule Type	Days	Starting Time	Ending Time
System (C:)	Smart Scheduled: 08/21 6:55 pm	Smart Scheduling	every day	all day	
Archive (D:)	Scheduled: 08/21 7:55 pm	every 2 hours	every day	all day	
New Data (E:)	Not Scheduled				
Old System (N:)	Scheduled: 08/25 12:01 am	one time	Monday	12:00 midnight	12:00 midnight
Old Data (Y:)	Not Scheduled				

- Volume letter and name
- Next scheduled defragmentation
- Schedule type
- Days
- Starting time
- Ending time

Toolbar Buttons

By default, Diskeeper displays a toolbar of commonly-used controls above the disk volume pane. (The toolbar and other display components can be hidden by using the **Customize** option in the **View** menu.)

Note: Many of the functions described in this section can also be activated from the menu that appears when you right-click on a selected disk volume in the disk volume pane.

Analyze Button



Click **Analyze** in the Diskeeper toolbar, the **Analyze selected drive** option in the Command pane or on the Action menu to begin the analysis of the selected disk volume.

Defragment Button




Click **Defragment** in the Diskeeper toolbar, the **Defragment selected drive** option in the Command pane or the Action menu to start the manual defragmentation of the selected volume.

Pause Button




Click **Pause** in the Diskeeper toolbar or the **Pause** option in the Action menu to temporarily pause a fragmentation analysis or the manual defragmentation of the selected volume.


Resume Button

Click **Resume**  in the Diskeeper toolbar or the **Resume** option in the Action menu to continue a paused Diskeeper analysis or defragmentation operation.

Stop Button

Click **Stop**  in the Diskeeper toolbar or the **Stop** option in the Action menu to stop a fragmentation analysis or the manual defragmentation of the selected volume. Any file movement in progress will be safely ended as Diskeeper stops.

Help Button

Click **Help**  in the Diskeeper toolbar or the Help option in the Action menu to access the Diskeeper Help system.

Boot-Time Defragmentation Overview

Note: The Boot-Time defragmentation option is only available in Diskeeper when running on Windows NT, Windows 2000, Windows XP, or Windows Server 2003.

Boot-Time defragmentation consists of three independent activities:

- **Directory Defragmentation and Consolidation**—moves directories to a single location. Windows NT, Windows 2000, Windows XP, and Windows Server 2003 write directories into random locations all over a volume. This, in effect, breaks up the free space on the volume. By grouping all the directories into a single location on a volume, larger areas of contiguous free space become available. Therefore, new files are more likely to be written to the volume in a contiguous manner. This also helps make Diskeeper more effective when it is run in either the Set It and Forget It or manual defragmentation modes.

Note that on NTFS volumes on Windows 2000, Windows XP and Windows Server 2003 systems, directories can be moved and defragmented online, which makes directory consolidation on these volumes unnecessary. This is also why directory consolidation is not necessary on Windows 95/98/Me systems.

In most cases, you should run Boot-Time directory consolidation shortly after the first time you use Diskeeper defragmentation on a volume, or after any operation (such as installing a new application), that creates multiple directories. By moving all the directories together, you create more contiguous free space for file defragmentation.

60 Diskeeper Operation

- **Master File Table (MFT) Defragmentation**—defragments the Master File Table (MFT). The MFT is a critical section of Windows NTFS disk volumes. The MFT is used by the NTFS file system to locate files on a volume, so fragmentation of the MFT slows the retrieval of files on the disk—whether these files themselves are fragmented or not. Defragmenting the MFT will improve the overall performance of the volume.

Note that on Windows XP and Windows Server 2003 systems, most, but not all of the Master File Table can be defragmented by Diskeeper online during normal Set It and Forget It or manual defragmentation operations. The boot-time process is still required to fully defragment the MFT, but it usually does not need to occur as often as it does on Windows NT and Windows 2000.

- **Paging File Defragmentation**—defragments the paging file. Fragmented paging files can slow Windows performance. They can also hurt the effectiveness of Diskeeper, since the unmovable paging file fragments break up the free space on the volume. By defragmenting your paging file, you can help maintain peak Windows performance, and help Diskeeper run better at the same time. After a paging file has been defragmented, it should remain contiguous unless its size is changed.

Boot-time defragmentation opens up larger areas of contiguous free space for new file creation and modification.

Important: For best results with the Boot-Time defragmentation feature, Executive Software strongly recommends:

1. Do a full backup of the disk volume before running any Boot-Time operations. This provides an additional level of safety in case of a disk drive failure.
2. Make sure you have sufficient contiguous free space. Delete unneeded files and perform one or more manual defragmentation runs to defragment the volume as much as possible.
3. Enable the **Run the system “CHKDSK” utility before defragmentation** option. This will help prevent vital files from being moved to bad disk sectors.
4. Boot-Time defragmentation can take a long time, especially on very large disk volumes that are severely fragmented. Therefore, before running Boot-Time operations, you should:
 - Schedule the Boot-Time operation on weekends or other time when the machine is not needed immediately.
 - Perform the Boot-Time operation on only one disk volume at a time.

On Windows NT, directory consolidation, MFT defragmentation and paging file defragmentation are done at boot-time, because the directories, the MFT, and the paging file cannot be moved safely while Windows NT is active. (Note that under

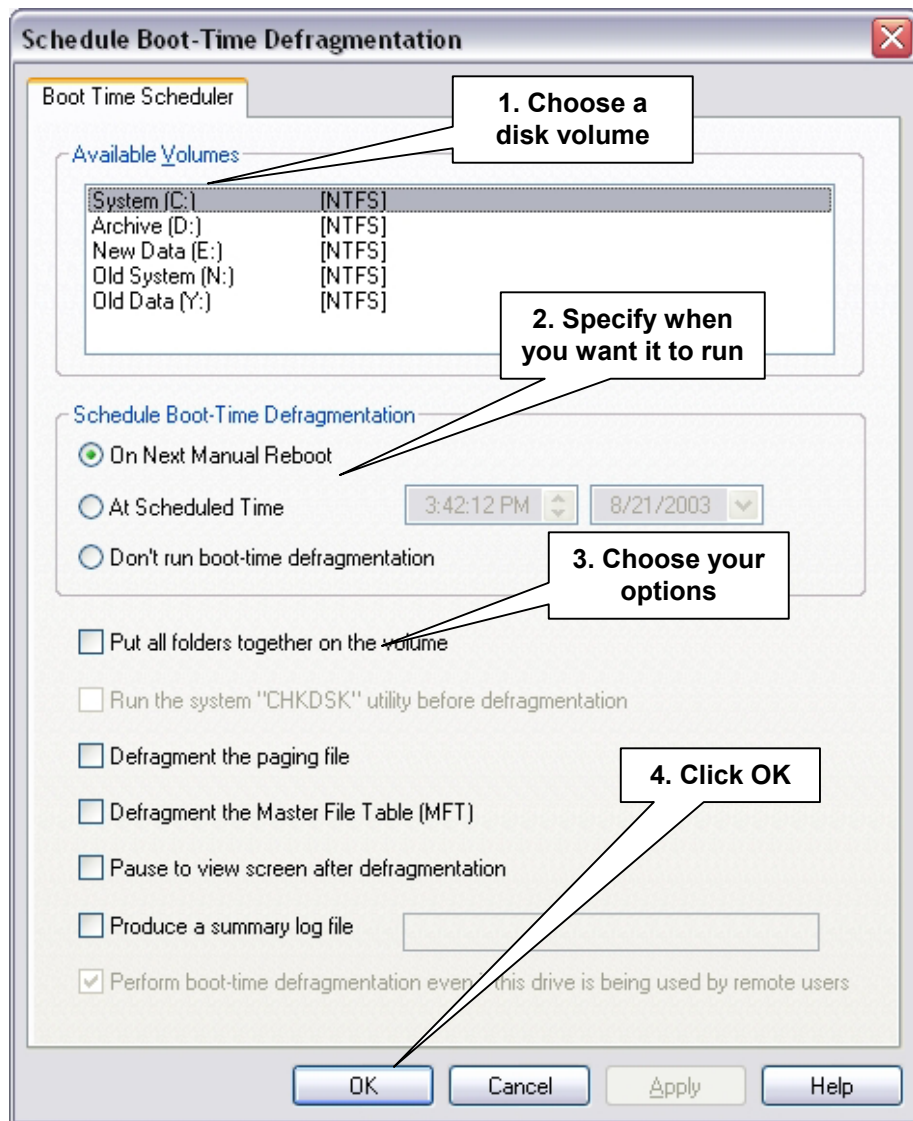
Windows 2000, Windows XP and Windows Server 2003, directories on NTFS volumes can be moved and defragmented online, which makes directory consolidation on these volumes unnecessary.)

Several points about Boot-Time defragmentation:

- Keep in mind that for maximum efficiency, the Boot-Time defragmentation operation concentrates only on files that cannot be defragmented online. It is not intended to defragment all the files on your disk.
- Boot-Time defragmentation relies on having a contiguous free space into which to move the directories and/or paging file on your volume. Therefore, it is important to run Diskeeper in either the Set It and Forget It or Manual Defragmentation mode *before* running Boot-Time defragmentation.
- Boot-Time defragmentation is a one-time operation. After it runs on a volume, it is not automatically set up to run again. You must set it each time you want it to run on a volume. It is usually not necessary to run Boot-Time defragmentation repeatedly on a volume.
- It is safe to restart your computer midway through the Boot-Time defragmentation operation. However, if you do so, you should use the Error Checking option in **Drive Properties | Tools** on the volume that was being processed when you restarted your computer, and enable both the fix and the scan options, or (if you are running from the Windows Command Prompt) run CHKDSK, using the /F qualifier. This ensures the files and free space on the volume are correctly allocated.
- After running the Boot-Time defragmentation, use the Set It and Forget It option to keep the volume defragmented.

Running a Boot-Time Defragmentation

Select **Set up a boot-time defragmentation** from the **Set It and Forget It** menu in the Command pane to display the **Schedule Boot-Time defragmentation** dialog box: (This option is also available from the Action menu.)



The following controls are available in the **Schedule Boot-Time Defragmentation** dialog box:

Available Volumes

Use this section of the **Schedule Boot-Time Defragmentation** dialog box to specify the volume(s) upon which you want to consolidate the directories and/or defragment the paging file and Master File Table (MFT). You can select more than one volume at a time, but be aware that the volumes will be processed one at a time, and your

computer will be restarted automatically after each volume is processed. This will substantially increase the time needed to complete the operation.

Always select at least one volume *before* choosing any of the other options in the **Schedule Boot-Time Defragmentation** dialog box.

Schedule boot-time defragmentation

Use this section of the **Schedule Boot-Time Defragmentation** dialog box to specify when you want the boot-time defragmentation operation to occur. You can choose from any one of these options:

- **On next manual reboot**—The boot-time operation will take place the next time the computer is rebooted
- **At scheduled time**—Use the Date and Time controls to specify when you want the computer to be automatically rebooted.

About one hour before a scheduled Boot-Time defragmentation is due, a message is broadcast at regular intervals to all users logged on to the computer, informing them that a scheduled reboot is about to take place and requesting them to log off. If at the scheduled time someone is still logged on and **Perform boot-time defragmentation even if this drive is being used by remote users** is cleared, the computer will not reboot, but will instead perform the Boot-Time defragmentation the next time the computer is rebooted manually. If this option is set, however, the machine will reboot at the scheduled time, regardless of whether or not any users are logged on.

- **Don't run boot-time defragmentation**—Use this option to clear a previously-scheduled boot-time operation. This option is useful for cases where you've scheduled a boot-time defragmentation, then decided to postpone the operation.

Put all folders together on the volume

Check this box to defragment and consolidate the directories of the selected volumes, next time your computer starts up.

Run the system "CHKDSK" utility before defragmentation

Use this control to specify whether the Windows CHKDSK disk error checking utility is run (using the /F qualifier) before the Boot-Time operation. Running CHKDSK adds time to the Boot-Time defragmentation operation, but it can correct disk errors that otherwise would hamper effective directory consolidation.

Note: Enabling the CHKDSK option will cause CHKDSK to run on each selected volume before the Boot-Time defragmentation process. The time increase can be considerable and Executive Software therefore recommends performing boot-time defragmentation on one volume at a time.

Also Note: After enabling the CHKDSK option, you will not be able to run either Set It and Forget It or manual defragmentation on the disk until you reboot. For this reason, Executive Software recommends waiting to enable this option until just before you are ready to reboot your computer.

Defragment the Paging File

Check this box to defragment the paging file of the selected volume the next time your computer starts up.

Defragment the Master File Table (MFT)

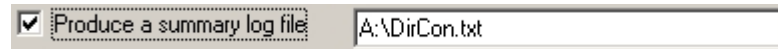
Check this box to defragment the MFT of the selected volume the next time your computer starts up.

Pause to view screen after defragmentation

When enabled, this option causes the Boot-Time operation to pause after completion. It remains in this paused state until you manually restart your computer (by either pressing the **Reset** button or turning off the power switch). If this option is not enabled, the Boot-Time defragmentation operation pauses a short 15 seconds (to allow you to read any messages on the monitor screen), then automatically restarts your computer.

Produce a summary log file

Use this option to cause a text file to be written that summarizes the Boot-Time defragmentation operation. When this option is enabled, a default volume letter, directory, and file name are shown in the dialog box similar to this:



By default, the summary file is written to your floppy drive (A:). This dialog box can be edited to specify another volume, directory path, and filename. However, the summary file cannot be written to the volume upon which you are running Boot-Time defragmentation. Also note that the filename should not contain any spaces.

Note: Some computers read the floppy drive at boot-time. We therefore recommend not writing the summary file to the A: drive, unless no other volumes are available.

Perform boot-time defragmentation even if this drive is being used by remote users

When this option is set, the computer will force a reboot at the scheduled date and time, if the **At scheduled time** option has been selected, regardless of whether or not anyone is logged on to the machine. Users who are logged on will be notified at regular intervals, starting one hour before the scheduled reboot, to give them an opportunity to log off.

If this option is cleared, a scheduled reboot will not occur at the scheduled date and time if one or more users are still logged on when the reboot due. In that case, the Boot-Time defragmentation run will occur the next time the machine is rebooted manually.

OK

Click **OK** to schedule Boot-Time defragmentation of one or more selected volumes and close the **Schedule Boot-Time defragmentation** dialog box. Boot-Time defragmentation will be run as scheduled on any volumes that are set.

Apply

Click **Apply** to schedule Boot-Time defragmentation of one or more selected volumes without closing the **Schedule Boot-Time defragmentation** dialog box. When a volume has been scheduled, it will be noted in the Available Volumes box. Also, use the **Apply** button to change the characteristics of a previously set Boot-Time defragmentation (such as enabling/disabling the Summary File option).

Boot-Time defragmentation will be run as scheduled on any volumes that are set.

Cancel

Click **Cancel** to close the **Boot-Time defragmentation** dialog box without making any changes.

Help

Click **Help** to view context-sensitive help about using Boot-Time defragmentation.

Setting an Exclusion List

Diskeeper exclusion lists allow you to specify files and directories that will not be allowed to be processed by Diskeeper in the Set It and Forget It or manual defragmentation modes. For example, you might not want to defragment temporary files that will soon be deleted.

Keep in mind that fragmented files that are excluded from defragmentation can “skew” the analysis results displayed in the Performance and Reliability panes.

Choose the **Exclude selected files and folders** option from the **Change your settings** menu in the Command pane to open the **Exclude** dialog box shown below: (This option is also available from the Action menu.)



Note: Wildcard file specifications such as * or ? are allowed.

The following controls are available in the **Exclude** dialog box:

Files

Use this section of the **Exclude** dialog box to choose specific files (by name) to be excluded from defragmentation. Highlight the file(s) to be excluded, and then click **Add Files** to add the file to the exclusion list.

Path

Use this section of the **Exclude** dialog box to choose specific directories to be excluded from defragmentation.

Select a directory by highlighting it, and then click **Add Folder** to add the directory to the exclusion list.

When a directory folder is added to the exclusion list, any subdirectories below the directory in the tree are also excluded.

Volumes

Use this section of the **Exclude** dialog box to choose the disk volume from which you want to exclude files or directories from defragmentation.

Add Files Button

Click **Add Files** to add the selected file(s) to the Diskeeper exclusion list.

Add Folder Button

Click **Add Folder** to add the selected directory path to the Diskeeper exclusion list.

Exclusion List Box

This box shows the files, directories, and volumes that will be excluded from defragmentation.

Remove Button

Click **Remove** to remove specific files, directories, or volumes from the Diskeeper exclusion list. To remove one or more items from the list, highlight the items in the Exclusion List Box and click Remove.

Save Button

Click **Save** to save the exclusion list and return to Diskeeper.

Cancel Button

Click **Cancel** to cancel any changes you have made to the Diskeeper exclusion list and return to the main Diskeeper display.

Help Button

Click **Help** for context-sensitive help about the Diskeeper file exclusion list option.

Diskeeper Internal Exclusion List

There are certain files that should not be moved under any circumstances. These files may be system files or files related to specific applications. Moving these specific files can cause system or application failure. As a result, Diskeeper uses an “internal” exclusion list to ensure these files are always excluded from Diskeeper processing. This list is fixed in memory and cannot be modified. These are the files that are currently in the Diskeeper internal exclusion list:

- bootsect.dos
- hiberfil.sys
- memory.dmp
- safeboot.fs
- safeboot.csv
- safeboot.rsv

Note that these files are not displayed in the Diskeeper user-defined exclusion list. See *Diskeeper won't move some files no matter what I do. Is there a problem with Diskeeper?* on page 90 for more information about the Diskeeper internal exclusion list.

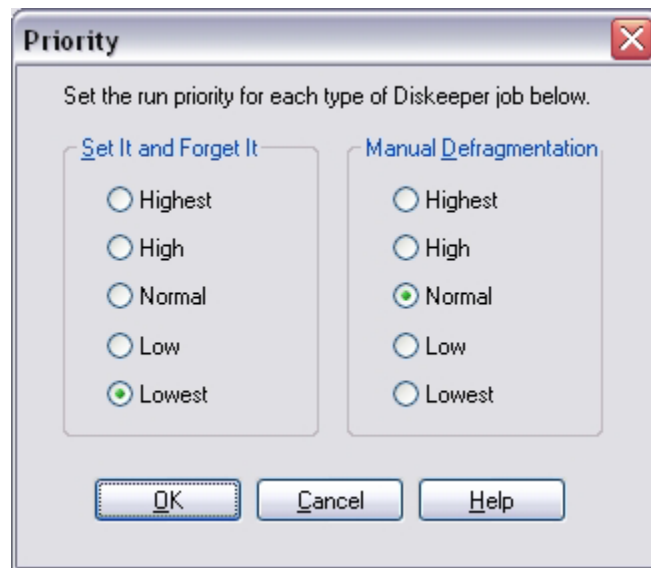
Setting Diskeeper Priority

Select the **Set defragmentation priority** option from the **Change your settings** menu in the Command pane to select the Windows priority at which Diskeeper defragmentation jobs run. (This option is also available from the Action menu.) You can set the priority independently for both “Set It and Forget It” and “Manual Defragmentation” defragmentation jobs.

By default, scheduled, Set It and Forget It defragmentation jobs run at the lowest possible Windows priority. Also by default, manual defragmentation jobs run at the normal Windows priority. The priority for either type of defragmentation job can be changed with the Priority option.

Running at the lowest priority minimizes the system performance impact when Diskeeper is defragmenting a disk volume. However, defragmentation jobs running at the lowest priority can take substantially longer to complete than those running at higher priorities, since Diskeeper “backs off” for any process running at a higher priority (even screen savers).

For this reason, you may have occasions where you want to run Diskeeper at a higher priority. Keep in mind, though, that your system performance may be impaired when Diskeeper is run at higher priorities.



To change the priority setting for either Set It and Forget It or manual defragmentation, click the appropriate option button and then click **OK**.

Using Different Defragmentation Methods

Diskeeper allows you to choose different types of defragmentation algorithms (or patterns) to suit your needs. Use the **Set defragmentation method** option in the **Change your settings** menu to open the **Defragmentation Options** dialog box shown below. (This option is also available from the Action menu.) Use this option to select the method Diskeeper uses for both manual and Set It and Forget It defragmentation jobs.

Diskeeper provides defragmentation methods that emphasize:

- **Maximum disk performance**—This is the default, proven and balanced mix of file defragmentation and free space consolidation. It is designed to gain the best disk performance without using excessive system resources. (This is the algorithm used by Diskeeper Professional Edition and Diskeeper Home Edition.)
- **Quick defragmentation**—This method provides the fastest defragmentation. It reduces the defragmentation time by placing the emphasis on defragmenting the fragmented files, rather than free space consolidation, since this returns the greatest system performance gain. This defragmentation method will complete

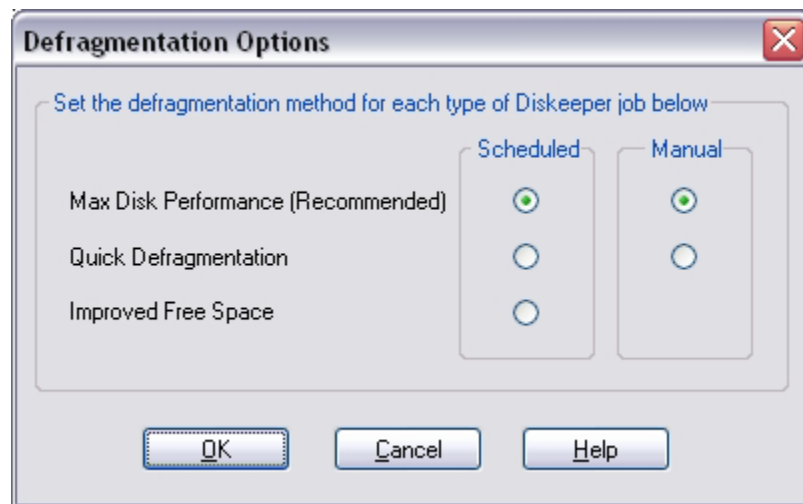
70 Diskeeper Operation

faster and use fewer resources, but note that the free space consolidation will not be as thorough as the other methods.

- **Improved free space consolidation**—This defragmentation method performs additional free space consolidation. This method performs a normal Diskeeper defragmentation, but then additionally performs extra processing to further improve free space consolidation. It is important to note this method requires additional processing and time, and free space consolidation improvement will be gradual as the option is used over time. Because of this, the Improved Free Space option is only available for Set It and Forget It defragmentation jobs.

On Windows NT 4.0 systems, you should run a boot-time directory consolidation before using this option, to make more contiguous free space available.

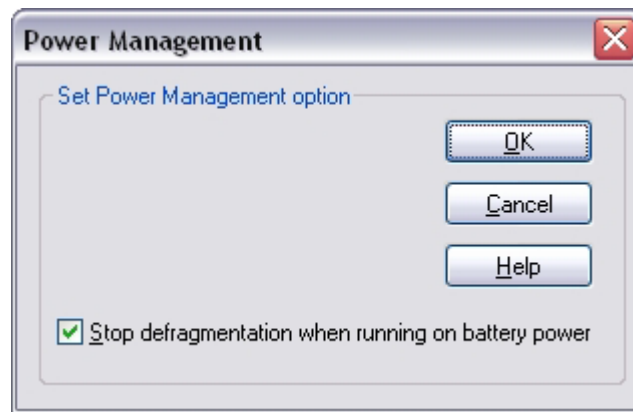
On Windows XP and Windows Server 2003 systems, free space consolidation may be improved by running a boot optimization from the Windows Command Prompt before using this option. See page 81 for more information about boot optimization and the command prompt.



To change the defragmentation method for either Set It and Forget It or manual defragmentation, click the appropriate option button and then click **OK**.

Using Power Management

The Power Management option is intended for users of laptop or portable computers. Use the **Set power management options** option in the **Change your settings** menu to enable or disable this feature. (This option is also available from the Action menu.)



When this option is enabled and the computer is running on battery power, any scheduled defragmentation jobs are postponed, and a message noting this is written to the Windows Application Event Log. If you manually start a defragmentation job when this option is enabled (and the computer is running on battery power), a message is displayed asking if you want to continue, even though running Diskeeper on battery power may reduce the available battery time.

When this option is enabled and the computer switches from normal power to battery power, any ongoing scheduled analysis or defragmentation jobs are safely stopped and a message noting this is written to the Windows Application Event Log. If you are running Diskeeper manually and the computer switches to battery power when this option is enabled, a message is displayed informing you that Diskeeper has stopped running.

Logging Diskeeper Activity

Use the **Set event logging options** option from the **Change your settings** menu in the Command pane to open the **Event Logging** dialog box. (This option is also available from the Action menu.) Use this option to enable and disable the logging of various Diskeeper events to the Windows Application Event Log.

Windows NT/2000/XP/Server 2003 Event Log

When Diskeeper is running on Windows NT, Windows 2000, Windows XP or Windows Server 2003, a log of Diskeeper activity is stored in the Application Event Log file.

When Diskeeper logs an event, the event and its message are appended to the Windows Application Event Log file, along with the date, time, user, and other identifying information.

These events can then be viewed with the Windows Event Viewer by choosing the **Application** option in the **Log** menu of the Event Viewer. This can be done on either local computers or remote computers on your network. The Event Viewer is found in the Windows Administrative Tools group on Windows NT 4.0 and in the Computer Management Console on Windows 2000, Windows XP and Windows Server 2003.

By default, the Application Event Log is 512 kilobytes in size and is set to overwrite events older than 7 days. Diskeeper may quickly fill the log file if these default settings are used. To make this log a more useful size, perform the steps described in “The Windows Application Event Log,” page 7.

Windows 95/98/Me Event Log

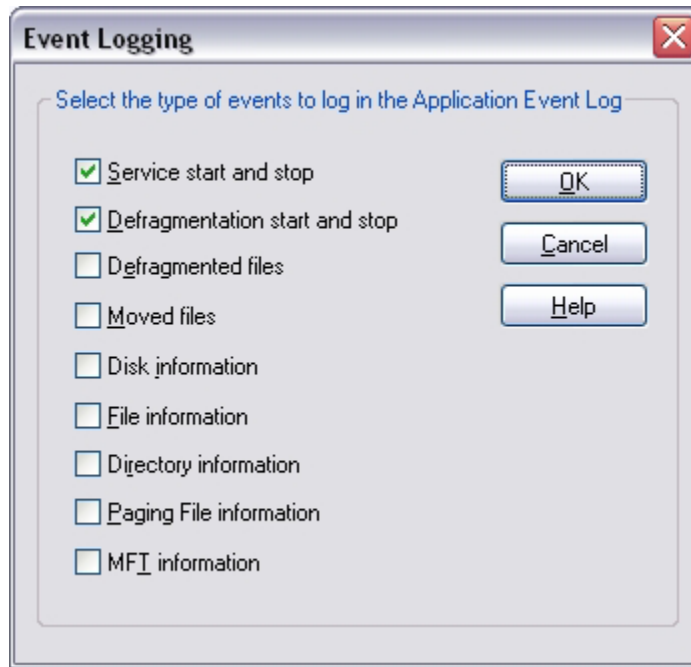
When Diskeeper is running on Windows 95/98/Me systems, it provides the option of logging Diskeeper events into a text file. When Diskeeper logs an event, the event and its message are appended to the Diskeeper log file. These events are written as a text file, which can then be viewed with Notepad, or your choice of text editor programs.

The Diskeeper log file is named **DkEventLog.txt** and it is stored by default in the directory folder where Diskeeper is installed. The file is limited to 1 MB in size. When it reaches this size, the log is purged completely and the event log is started from scratch.

Specifying What Gets Logged

Use the **Set event logging options** option from the **Change your settings** menu in the Command pane to open the **Event Logging** dialog box. (This option is also available from the Action menu.)

The **Event Logging** dialog box displays a list of events for which logging can be enabled or disabled. Click the check boxes for the following options to alternately enable or disable each option.



Service start and stop

When this option is enabled, an entry is made to the Event Log each time the Diskeeper service starts or stops. This option is enabled by default.

Defragmentation start and stop

When this option is enabled, an entry is made to the Event Log whenever a defragmentation run starts or stops. The Event Log entry for this option also includes information about files that cannot be moved, either because the files are on a Diskeeper exclusion list, or the files cannot be opened. Common causes preventing a file from being opened include access controls or permissions on the file being set to prevent Diskeeper from accessing it. File permissions must allow SYSTEM to have full control of a file in order for Diskeeper to defragment it. See page 93 for more information about setting access permissions.

This option is enabled by default.

Defragmented files

When this option is enabled, an entry is made to the Event Log listing each file that is defragmented by Diskeeper. Note that enabling this option can cause the Event Log to fill rather quickly, especially if Diskeeper defragments a high number of fragmented files. (This will be particularly likely when Diskeeper is first run on a volume, since Diskeeper will probably be defragmenting a large number of files.)

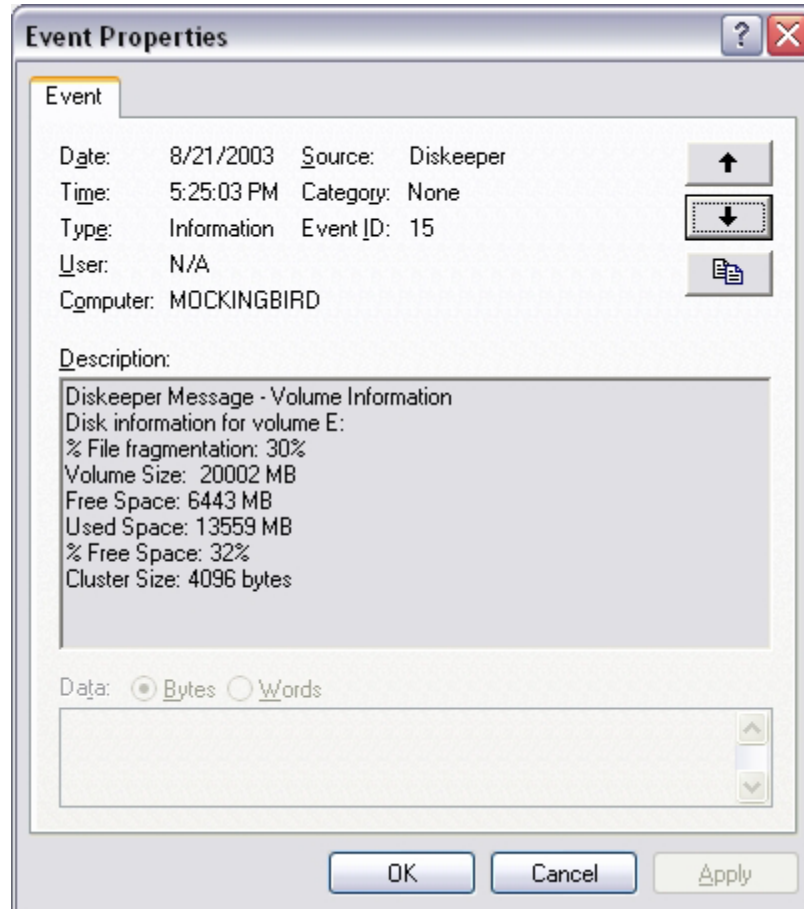
This option is not enabled by default.

Moved files

When this option is enabled, an entry is made to the Event Log each time a file is moved for reasons other than to defragment the file. This would include cases where files are moved in order to create more contiguous free space. This option also notes when files could not be moved, such as files that are on a Diskeeper exclusion list or files that cannot be opened. Common causes preventing a file from being opened include access controls or permissions on the file being set to prevent Diskeeper from accessing it. As mentioned previously, file permissions must allow SYSTEM to have full control of a file in order for Diskeeper to defragment it. See page 93 for more information about setting access permissions.

Here again, enabling this option can cause the Event Log to fill quickly. This option is not enabled by default.

Disk information

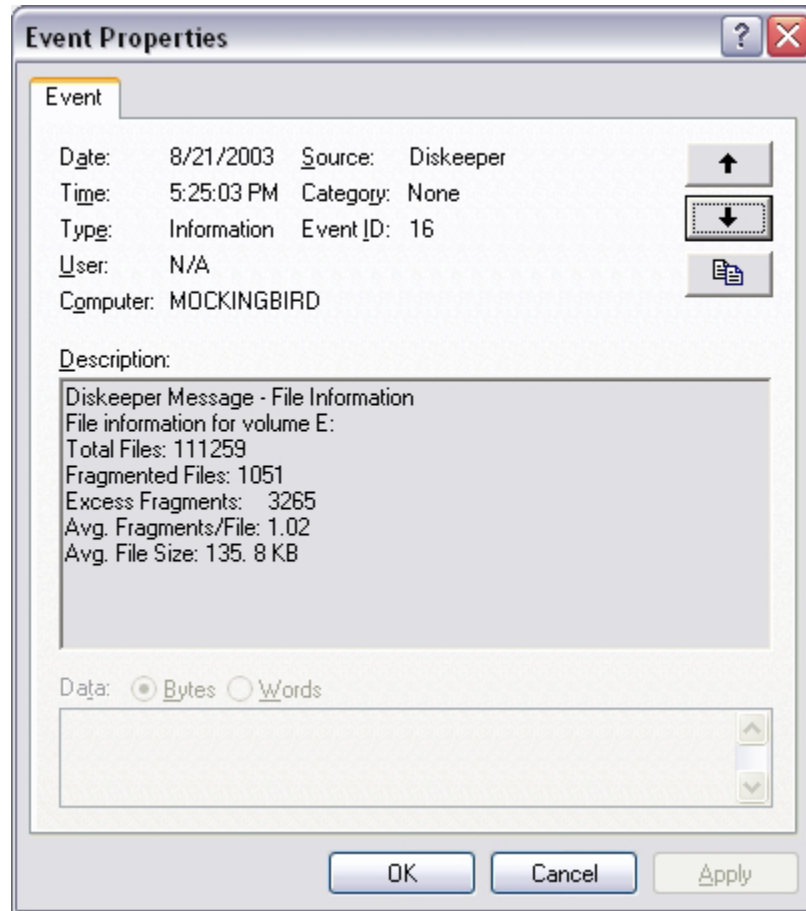


On Windows NT, Windows 2000, Windows XP, and Windows Server 2003: When this option is enabled, an entry is made to the Application Event Log at the end of each defragmentation run showing general information about the disk volume that was defragmented. This appears in the Windows Event Viewer as Diskeeper Event 15. When you double-click Diskeeper Event 15 in the Event Viewer, information similar to this example is displayed. This option is not enabled by default.

On Windows 95/98/Me: When this option is enabled, an entry is made in the Diskeeper EventLog.txt file containing the information shown in the example above. This option is not enabled by default.

For a description of information contained in the Description box, see page 35.

File information



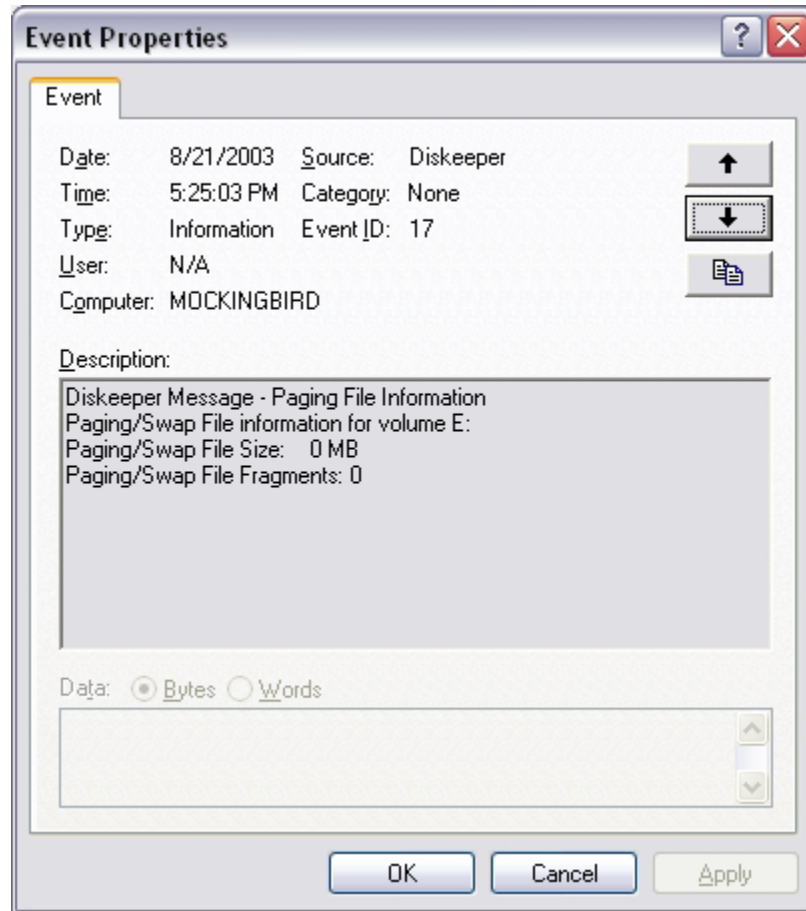
On Windows NT, Windows 2000, Windows XP, and Windows Server 2003:

When this option is enabled, an entry is made to the Event Log at the end of each defragmentation run showing information about the files on the disk volume that was defragmented. This appears in the Windows Event Viewer as Diskeeper Event 16. When you double-click Diskeeper Event 16 in the Event Viewer, information similar to this example is displayed. This option is not enabled by default.

On Windows 95/98/Me: When this option is enabled, an entry is made in the Diskeeper EventLog.txt file containing the information shown in the example above. This option is not enabled by default.

For a description of information contained in the Description box, see page 35.

Paging File information

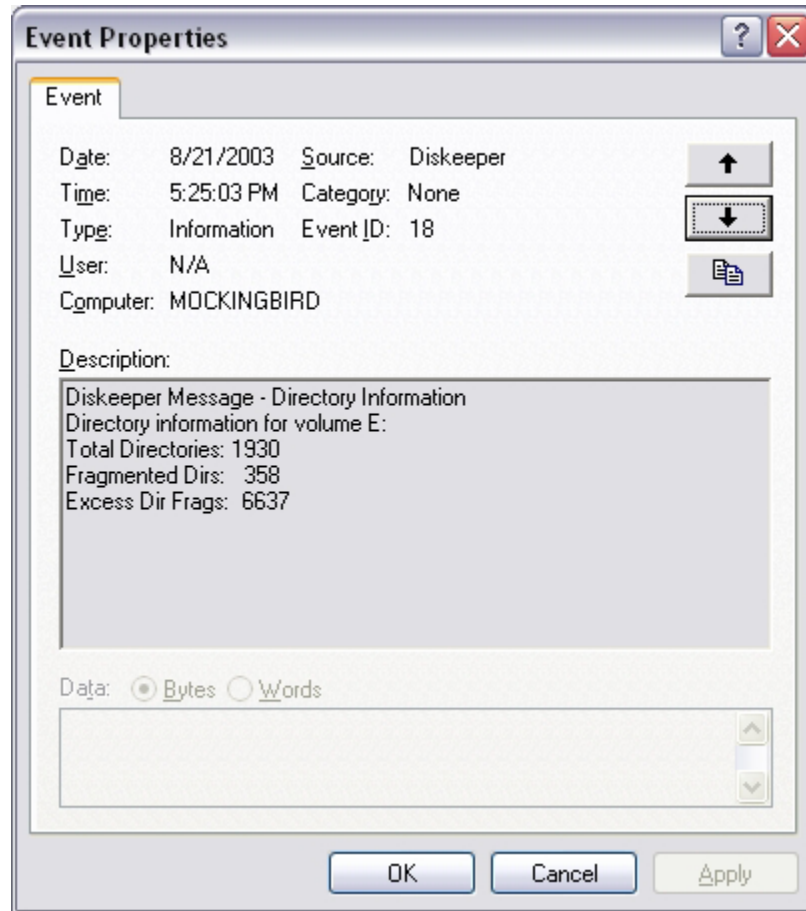


On Windows NT, Windows 2000, Windows XP, and Windows Server 2003:

When this option is enabled, an entry is made to the Event Log at the end of each defragmentation run showing information about the paging file on the volume that was defragmented (if it exists on the volume). This appears in the Windows Event Viewer as Diskeeper Event 17. When you double-click Diskeeper Event 17 in the Event Viewer, information similar to this example is displayed. This option is not enabled by default.

On Windows 95/98/Me: When this option is enabled, an entry is made in the Diskeeper EventLog.txt file containing the information shown in the example above. This option is not enabled by default.

For a description of information contained in the Description box, see page 35.

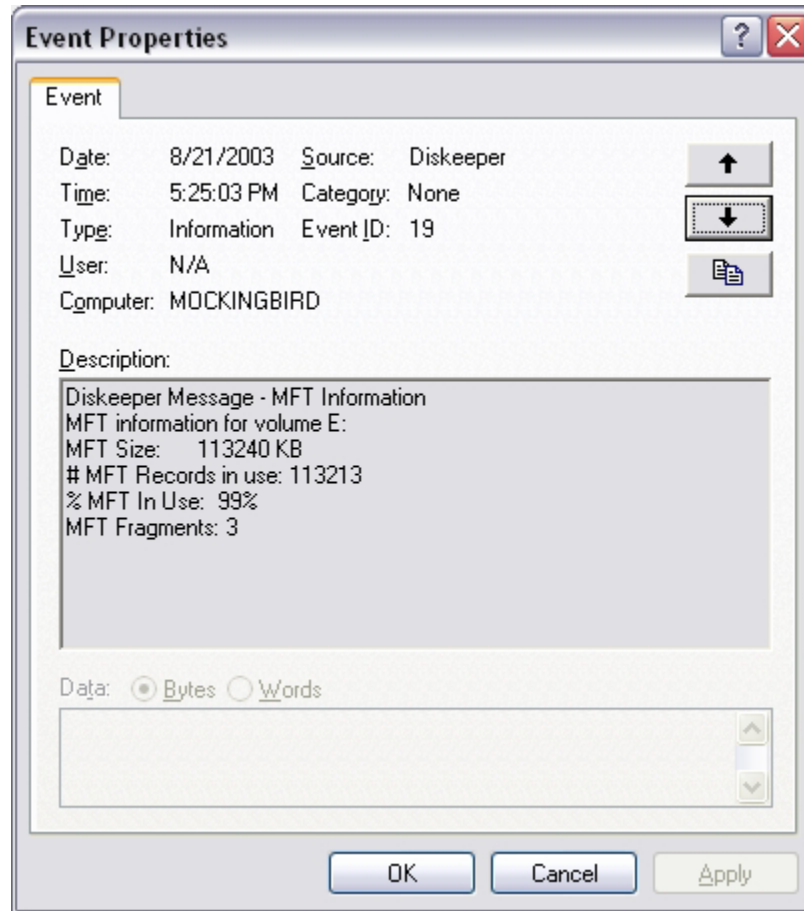
Directory information**On Windows NT, Windows 2000, Windows XP, and Windows Server 2003:**

When this option is enabled, an entry is made to the Event Log at the end of each defragmentation run showing information about the directories on the volume that was defragmented. This appears in the Windows Event Viewer as Diskeeper Event 18. When you double-click Diskeeper Event 18 in the Event Viewer, information similar to this example is displayed. This option is not enabled by default.

On Windows 95/98/Me: When this option is enabled, an entry is made in the Diskeeper EventLog.txt file containing the information shown in the example above. This option is not enabled by default.

For a description of information contained in the Description box, see page 35.

MFT information



On Windows NT, Windows 2000, Windows XP, and Windows Server 2003:

When this option is enabled, an entry is made to the Event Log at the end of each defragmentation run showing information about the Master File Table (MFT) on the volume that was defragmented. (Keep in mind, since only NTFS volumes have an MFT, this information will only apply to NTFS volumes.) The entry appears in the Windows Event Viewer as Diskeeper Event 19. When you double-click Diskeeper Event 19 in the Event Viewer, information similar to this example is displayed. This option is not enabled by default.

This option does not exist on Windows 95/98/Me machines, as MFT files are unique to Windows NT through Windows Server 2003.

For a description of information contained in the Description box, see page 35.

Terabyte Volume Engine

Some editions⁴ of Diskeeper include the Terabyte Volume Engine (TVE), which is a specialized defragmentation engine for very large disk volumes (100 GB or larger in size). The TVE is designed to efficiently handle volumes containing millions of files.

The TVE operates differently from the standard Diskeeper defragmentation engines since it is designed specifically for very large volumes. For example, when the TVE is defragmenting a disk, the graphic display usually shown in the Drive Map pane is replaced with numerical data showing the progress of the defragmentation operation. This reduction in system resource usage pays off in lower CPU consumption and faster defragmentation of very large volumes.

Also, the TVE may or may not examine the whole volume in a single process. This saves system memory resources.

Here is a description of the information displayed in the Drive Map pane when the TVE is defragmenting a disk volume:

File record examinations

This is the number of times a file record (MFT record) was examined and is basically used to show that progress is occurring. The number may be larger than the number of file records on the volume if a full job runs, because a file record may be examined more than once, or it may be smaller than the number of file records on the volume if the job didn't run to completion.

Fragmented file examinations

This is the number of the above file record examinations that located fragmented files. Again, a file may be examined more than once during a defragmentation job, so this number will not match the number of fragmented files reported in the Fragmentation pane report.

Fragments eliminated

This is the number of fragments that were eliminated by the TVE. It may not match the number of fragments reported in the Fragmentation pane report because the job was only partially completed, or because files became more or less fragmented as the result of other processes during the period when the engine runs.

Contiguous file examinations

This is the number of the above file record examinations that located contiguous files that could be moved to help consolidate free space. Not all files on the volume

⁴ See the Table of Diskeeper Editions on page 87 for a list of the Diskeeper editions with the Terabyte Volume Engine.

are candidates for this action, so the number will most likely be far less than the number of contiguous files in the Fragmentation pane report.

Files that could not be processed

This is the number of times that a file couldn't be moved. The most common reasons for a file not moving are:

- Diskeeper was denied permission to open the file (the file did not allow the SYSTEM process Full Control)
- The file was open for exclusive use by another process
- Free space was no longer available when the move was attempted.

The Windows application event log stores the reason(s) for the first fifty files that could not be processed.

Running Diskeeper From the Command Prompt

In addition to its Graphical User Interface (GUI), Diskeeper supports commands from the Windows command prompt. This provides an alternative method of defragmenting disk volumes. The single command supports several optional command qualifiers.

To use this command, follow these steps:

1. Open the Windows command prompt window.
2. Type **Diskeeper** at the command prompt, followed by a drive letter and any of the optional command parameters.

The Diskeeper command defragments the files of the selected volume. Use the command in this form:

```
Diskeeper <volume> [/b] [/?]
```

Parameters

<volume>

This is a required parameter that will accept any valid drive letter. A colon after the drive letter is not required.

/b

Boot—On Windows XP and Windows Server 2003 systems, this option causes specific files that are critical to booting your system to be moved adjacent to each other into a contiguous piece of free space, and defragments them if necessary. Using this option can decrease the time needed to boot your computer.

/?

Help—Displays the command prompt Help text.

Examples

Diskeeper D

Defragments volume D.

Diskeeper D /b

Defragments volume D and performs a boot optimization.

Diskeeper /?

Displays the following Help text:

```
Copyright (c) 2001 - 2002 by Executive Software  
International, Inc.
```

```
Diskeeper <volume> [ /b ] [ /? ]
```

```
<volume> is a required parameter that will accept a  
valid drive letter.
```

```
The switches are:
```

```
/b Boot - On Windows XP systems, defragments the  
files used to boot your computer, if needed.
```

```
/? Help - Displays this help message.
```

Chapter 5

Theory of Operation

This chapter describes the Diskeeper design goals and how those goals were met.

Introduction

As described in the introduction of this manual, the term *disk fragmentation* means two things:

- a condition in which pieces of individual files on a disk are not contiguous, but rather are broken up and scattered around the disk volume; and
- a condition in which the free space on a disk volume consists of little pieces of space here and there rather than a few large free spaces.

The effects of excessive fragmentation are twofold as well:

- file access takes longer because a file must be collected in pieces here and there, requiring several disk accesses instead of just one; and
- file creation takes longer because space for the file must be allocated in little pieces here and there instead of just one contiguous allocation.

Before the introduction of Diskeeper, there was no method for completely correcting the problems of file and free space fragmentation on Windows NT computers or in a mixed Windows network.

Design Goals

In designing Diskeeper for Windows, the following goals were established:

- The product must be completely safe to use.
- It must improve Windows system performance. It is not designed to make the disk look “pretty”—it is designed to improve disk performance and, as a result, overall system performance.
- It should process live disks without interfering with user access to files.
- It should run without operator intervention.

84 Theory of Operation

- It must defragment all possible files and consolidate free space into the smallest possible number of large spaces.

Diskeeper defragments files and free space on a disk, allowing access to the files on the disk at any time while Diskeeper is running.

Safety

Diskeeper is designed with *safety* as the highest priority.

To ensure the safe movement of files on Windows NT, Windows 2000, Windows XP, and Windows Server 2003 systems, Diskeeper uses mechanisms built into the operating system that were developed and implemented by Executive Software, and fully incorporated into Windows NT, Windows 2000, Windows XP, and Windows Server 2003 by Microsoft. On Windows 95, Windows 98, and Windows Me systems, Diskeeper uses similar mechanisms used by Microsoft and others.

By using these built-in mechanisms, Diskeeper maintains cache coherency, file security and permissions information, and file content integrity no matter how fragmented the files on the disk are.

The foremost design goal for Diskeeper is to make sure that no data is ever lost. To accomplish this goal Diskeeper uses the following criteria for accessing files:

- the contents of data files are never modified under any circumstances
- only one file is processed at a time, not the whole disk
- each processing pass is independent of the other passes
- no information is stored on any other device or in a “scratch space”
- Diskeeper accesses a file in such a way that no user access can conflict with Diskeeper during the critical portion of the relocation process
- file relocation is aborted if any error is encountered, leaving the file in its original state

Diskeeper was designed to err on the side of caution. In other words, it only moves a file on the volume when it is absolutely certain that no data will be lost, including file attributes. The only change to file attribute-type information is the physical location of the file on the volume. None of the file dates are changed and no other fields in the file record header are used to store Diskeeper information.

Diskeeper never defragments or moves files that are specifically stored at a specific physical location on the volume.

If anything causes your computer to crash while Diskeeper is running, or if you abort the Diskeeper defragmentation run in the middle of the file relocation process, no data is ever at risk.

Windows 95/98/Me Note: Stopping or pausing a Diskkeeper job through its menus or toolbars is completely safe. Note, however, that in the event of a system crash or other non-standard termination of the Diskkeeper process while it is running, it is possible for free space and file information to be stored incorrectly. Executive Software strongly recommends running the Windows Scandisk error checking utility immediately when Diskkeeper is stopped abnormally. Scandisk will correct any potential file errors.

Performance

When running in the “Set It and Forget It” mode, Diskkeeper is designed to run in the background, without adversely affecting performance of your Windows computer. Steps have been taken to assure that, by default, Diskkeeper overhead has the lowest possible impact on system performance. Diskkeeper can be run at the lowest possible Windows priority, using only otherwise unused CPU cycles. Diskkeeper was designed in such a way to ensure it will not interfere with other processes on your Windows computer.

However, for cases where you want to defragment disks more quickly, Diskkeeper allows you to increase the defragmentation priority. For more information, see *Setting Diskkeeper Priority* on page 68.

Process Live Disks

It is not acceptable to force users off the disk while performing routine defragmentation. To do so would be a case of the cure being worse than the disease. Access to fragmented files is better than no access at all.

The best solution is to defragment online with users active on the same disk volume. Diskkeeper was designed with this in mind. During most of the time Diskkeeper is processing a file, it shares the file with any other users that may access the same file. The last step of processing the file, however, involves locking the file for a very brief period, a matter of milliseconds. If another user requests a file that Diskkeeper has locked, that request is suspended for the brief period until Diskkeeper releases the file. Then the request is serviced. There is never an interruption of either process as a result of this delay.

This solution allows Diskkeeper to defragment open files safely, regardless of whether they are open for read operations or for write operations.

Note: Due to the Windows NT 4.0 design, directories, MFT and paging files cannot be moved safely on live disks. (NTFS directories *can* be moved on Windows 2000, Windows XP and Windows Server 2003.) Therefore, Diskkeeper performs these operations at the only safe time, while the computer is starting up.

No Operator Intervention

In keeping with the design goals, after Diskeeper has been started in the “Set It and Forget It” mode, it runs automatically in the background, without the need for operator intervention. It runs indefinitely, unless told otherwise by you.

Appendix A

Table of Diskeeper Editions

The table below shows the different editions of Diskeeper available, as well as the features and capabilities of each:

	Diskeeper 8.0 Editions						Diskeeper Administrator Edition
	Home	Professional	Server Web	Server Standard	Server Enterprise	Server Datacenter	
Defragmentation	✓	✓	✓	✓	✓	✓	N/A
Performance Analysis	✓	✓	✓	✓	✓	✓	N/A
Reliability Analysis	✓	✓	✓	✓	✓	✓	N/A
Fragmentation Analysis	✓	✓	✓	✓	✓	✓	N/A
Set It and Forget It Scheduling	✓	✓	✓	✓	✓	✓	N/A
Boot-Time defragmentation		✓	✓	✓	✓	✓	N/A
Defragmentation methods	1	3	3	3	3	3	N/A
Exclusion list	✓	✓	✓	✓	✓	✓	N/A
Event logging	✓	✓	✓	✓	✓	✓	N/A
Adjustable Priority		✓	✓	✓	✓	✓	N/A
Command line interface		✓	✓	✓	✓	✓	N/A
Maximum single volume size supported	512 GB	512 GB	512 GB	768 GB	4 TB	No Limit	N/A
Total disk space supported (all volumes)	No limit	No limit	No limit	No limit	No limit	No limit	N/A
Simultaneous operations	1	4	4	8	16	No limit	N/A
Terabyte Volume Engine					✓	✓	N/A
Remote control of local Diskeeper editions							✓
Can be controlled by Diskeeper Administrator		✓	✓	✓	✓	✓	N/A

88 Diskeeper Editions

This table shows the different Diskeeper editions available and the Windows operating systems they support:

	Diskeeper 8.0 Editions						Diskeeper Administrator Edition
	Home	Professional	Server Web	Server Standard	Server Enterprise	Server Datacenter	
Windows 95	✓	✓					
Windows 98	✓	✓					
Windows Me	✓	✓					
Windows XP Home	✓	✓	✓	✓			
Windows XP Tablet PC		✓	✓	✓			✓
Windows XP Media Center		✓	✓	✓	✓		✓
Windows NT 4.0 Workstation		✓	✓	✓			✓
Windows 2000 Professional		✓	✓	✓	✓		✓
Windows XP Professional		✓	✓	✓	✓		✓
Windows NT 4.0 Server				✓			✓
Windows 2000 Server				✓	✓	✓	✓
Windows Server 2003 Web			✓	✓	✓	✓	✓
Windows Server 2003 Standard				✓	✓	✓	✓
Windows 2000 Advanced Server					✓	✓	✓
Windows Server 2003 Enterprise					✓	✓	✓
Windows 2000 Datacenter Server						✓	✓
Windows Server 2003 Datacenter						✓	✓
Windows 2000 w/Server Appliance Kit				✓	✓		
Windows Server 2003 w/Server Appliance Kit				✓	✓		

Appendix B

Answers to Frequently Asked Questions

Why won't my volume defragment completely?

This can be the result of several situations. If your volume is extremely full, there may not be sufficient free space to defragment the files completely. In that case, we recommend temporarily moving some of the files off the volume, particularly large files. This temporary measure often allows Diskeeper the “working room” it needs to complete the defragmentation process. It also allows Diskeeper to defragment the free space on the volume, increasing the possibility that the temporarily-moved files can be moved back to the volume in a contiguous or less fragmented condition.

Another cause of incomplete defragmentation is a fragmented paging file. For more information, see *Can Diskeeper defragment paging files?* on page 91.

A volume that, at some time, has been filled to capacity may have a severely fragmented Master File Table (MFT). Volumes that have been converted from FAT to NTFS often also have a fragmented MFT. A White Paper describing the causes and effects of MFT fragmentation is available from the Executive Software Web site at <http://www.execsoft.com/whats-new/whitepaper.asp>. Use the Boot-Time defragmentation option to defragment a fragmented MFT. For more information, see *Boot-Time Defragmentation* on page 59.

Another situation that can prevent complete defragmentation of a volume is the existence of a large number of directories on the volume. For more information, see *Can Diskeeper move directories?* on page 91.

Yet another cause for incomplete defragmentation on Windows NT, Windows 2000, Windows XP, and Windows Server 2003 systems can be a security access situation. Both SYSTEM and ADMINISTRATOR must have full control over a file (or the directory folder it is in) in order for Diskeeper to have access to move the file. This is because the Diskeeper service runs under the Administrator account, and System access is necessary to defragment files safely. This security feature is governed by the Windows NT, Windows 2000, Windows XP, and Windows Server 2003 C2 security requirements. Included with Diskeeper is a batch file that sets the access permissions on a disk volume to allow Diskeeper to run properly. See *How do I set access permissions to allow Diskeeper to defragment my files?* on page 93 for information about using this batch procedure.

Diskeeper won't move some files no matter what I do. Is there a problem with Diskeeper?

Diskeeper has a built-in list of files that it will not move under any circumstances. This list is referred to as the Diskeeper internal exclusion list.

The most common reason for a file existing on the Diskeeper internal exclusion list is safety. The file cannot or should not be moved in order to maintain the integrity of your system.

For example, the file `memory.dmp` is on the Diskeeper internal exclusion list. This file is on the exclusion list because the disk locations where this file is stored are loaded by the kernel when the system boots and stored in memory. These disk locations are then used to write the dump file should it need writing. If Diskeeper were to move this file, then the system failed, the dump file would be written over other files or in space considered to be free space. This could result in a very corrupted disk.

The same situation applies to `hiberfil.sys`. When your system goes into hibernation mode, the pre-fetched disk locations are overwritten with the hibernation data. If Diskeeper moved `hiberfil.sys` out and moved other files into those disk locations, then disk corruption would occur.

Why doesn't Diskeeper move all of the files into one place on the volume?

Our primary philosophy with Diskeeper is improving and maintaining the performance of your computer. The disk drives are the primary bottleneck in your computer's performance. Diskeeper restores the disks to top speed by eliminating fragmentation.

It is a common misconception that a defragmented disk should look very neat and tidy in the Drive Map pane, with solid blue bars all the way across the screen (representing fragmentation-free files) and the rest white space (representing consolidated space).

Clearly, the speed of the disk (meaning how fast you can access the data on it) is more important than the prettiness of the display or the consolidation of all the free space into one place. Free space consolidation might be important if the next file that you plan to create needs to be one gigantic contiguous file, but it has no effect on performance. Because of this, Diskeeper uses algorithms that achieve the highest speed from your drive regardless of the arrangement of the free spaces on the drive and on the screen—and it does so without wasting time on excessive consolidation of free space. We simply go for the fastest possible file access times and then stop.

Even so, you might ask why we don't continue and rearrange the files further to get a neat display? Because it takes computer power to do so. We long ago decided that it would be wrong for Diskeeper to consume more of your computer's performance

than it gives back. So Diskkeeper defragments until the disk is in top shape performance-wise and then stops. Any further work is a waste of your computer resources.

Now this might not be important to you if you like to sit and watch the display as Diskkeeper defragments your drive, but it is a very big deal to large corporate data centers and people who depend on their computers for their work. They need all the performance they can get and can't hold up production while the defragmenter works to enhance the "look" of the disk but not improve its performance. This is why Diskkeeper is designed to run in the background at the lowest possible priority, giving way to any other program that needs to run. And it is also why Diskkeeper stops defragmenting when maximum performance has been achieved.

Can Diskkeeper move directories?

Windows NT 4.0 does not allow directories to be moved, because of data integrity issues related to how Windows NT maintains directory information. Since Diskkeeper runs while other processes are active on the system, it does not attempt to move directories online.

However, directories on Windows NT 4.0 volumes can be moved safely while your computer is being started—a time when Windows has not yet taken complete control of the files and directories on your disk. For more information on how to consolidate Windows NT 4.0 directories, see *Boot-Time Defragmentation* on page 59.

On Windows 95/98/Me computers, and NTFS volumes on Windows 2000, Windows XP, and Windows Server 2003 systems, Diskkeeper can safely move and defragment directories, which makes consolidation unnecessary.

Can Diskkeeper defragment paging files?

Diskkeeper does not defragment active paging files, since paging files must be open for exclusive use by Windows at all times. However, Diskkeeper can defragment paging files safely when your computer is being started—a time when the operating system has not yet taken full control of the files and directories on your disk. For more information, see *Boot-Time Defragmentation* on page 59.

Can Diskkeeper defragment the Master File Table?

The Master File Table (MFT) is the area on an NTFS disk volume where Windows NT, Windows 2000, Windows XP, and Windows Server 2003 keep the necessary information for retrieving files from the disk volume. The MFT also contains information such as file creation, modification, and backup dates and times. Because the MFT is held open for exclusive use by Windows, Diskkeeper does not move any pieces of this critical system file while Windows is running, but can do so safely at boot-time. For more information, see *Boot-Time Defragmentation* on page 59.

Why doesn't Diskeeper completely consolidate the free space on my volume?

Several factors can prevent the free space on a volume from being defragmented:

- A fragmented paging file. For more information, see "Boot-Time Defragmentation," page 59.
- A large number of directories on the volume. For more information, see "Can Diskeeper move directories?" on page 91.

On NTFS volumes, a portion of the free space on the volume is reserved by Windows for the Master File Table (MFT). For more information, see *Why don't my files get moved to the beginning of the volume?* on page 92.

Having all of the free space in a single, contiguous piece provides very little (if any) performance benefit. Free space fragmented into hundreds of pieces will affect disk performance, but free space that's in a few pieces should not have any effect on the performance of your volume.

Why don't my files get moved to the beginning of the volume?

On NTFS volumes, Windows NT, Windows 2000, Windows XP, and Windows Server 2003 reserve a portion of the free space on a disk volume for the Master File Table (MFT). This free space is usually most noticeable at the physical "beginning" of the volume (easily seen using Drive Map pane), but space is also reserved for use by the MFT in other areas of the volume.

Since this space is reserved for exclusive use, Diskeeper will not move files into these areas of the volume, but will move them out of these areas.

Why don't all of my NTFS volumes appear in the Diskeeper Volume List?

Both SYSTEM and ADMINISTRATOR must have full control over a file (or the directory folder it is in) in order for Diskeeper to have access to move the file. This is because the Diskeeper service runs under the Administrator account, and System access is necessary to defragment files safely. This is a security feature governed by the Windows NT, Windows 2000, Windows XP, and Windows Server 2003 C2 security requirements.

If the root-level directory folder does not have SYSTEM and ADMINISTRATOR set for full control (as seen in the Permissions section under the Security tab in the Properties dialog box) Diskeeper will not display the disk volume in the Volume list under some circumstances.

How do I determine how often to run Diskeeper on my volume?

This depends on many factors, including the level of file activity, the sizes and types of files used, and the amount of free space available on the volume. While there are no set rules on how often to defragment your disk volumes, here are some guidelines.

- Of course, the first suggestion is to let the Diskkeeper Smart Scheduling feature automatically and dynamically determine the optimum run frequency for your particular disk volumes. Smart Scheduling monitors the fragmentation levels of your volumes and adjusts the defragmentation schedule to best fit your needs, even as those needs change. See *Smart Scheduling* on page 46.
- Disk volumes on busy file servers should be defragmented more often than those on single-user workstations. You may need to run Diskkeeper on a server volume as often as every two to four hours to maintain optimum system performance, while on a workstation, you may only need to run Diskkeeper once a day or less. As a general rule, the busier the disk—the more often it will need to be defragmented.
- To determine how often to run Diskkeeper on your disk volumes, you can use the logging function of Diskkeeper to monitor the number of files moved during each Diskkeeper run. For information about how files that are moved by Diskkeeper are logged, see “Logging Diskkeeper Activity” on page 71. In general, if Diskkeeper moves fewer than 50 files per run, you are running Diskkeeper frequently enough to maintain the performance of your Windows system at an optimum level. If the number of files moved during each run is greater, or is increasing, schedule Diskkeeper to run more frequently. (Here again, you can automate this by letting the Diskkeeper Smart Scheduling feature control when to run Diskkeeper.)

How do I set access permissions to allow Diskkeeper to defragment my files?

In order for Diskkeeper to have access to move files, both SYSTEM and ADMINISTRATOR must have full control over a file (or the directory folder it is in). This version of Diskkeeper includes a batch file that sets the access permissions on a disk volume to allow Diskkeeper to run properly. This batch file is called **setdkacls.bat**, and it is located in the directory folder where Diskkeeper is installed.

If you find you have made files inaccessible to Diskkeeper, or that you have some files inaccessible to Diskkeeper, open a command-prompt window, change directory to the Diskkeeper installation directory, and type:

```
setdkacls x:
```

where *x*: is the letter name of the disk volume on which you want to change access permissions.

The **setdkacls.bat** procedure automates the following sequence of commands:

```
cd /d x:
```

```
cd \  
cacls * /e /t /c /g Administrators:F System:F
```

For more information about the **cacls** command, type **cacls /?** at a command prompt.

This batch procedure will only work if the account you are logged onto has been granted access to the file(s) you are wanting to defragment.

Why don't my defragmentation jobs all start at the same time?

Most editions of Diskkeeper allow you to defragment more than one disk volume at a time. However, when the defragmentation of two or more disks is scheduled to begin at the same time, Diskkeeper will start each job separately, in one-minute intervals. For this reason, you will notice the start times for each Diskkeeper job run in the Application Event Log can vary by several minutes. This is no cause for alarm.

Why doesn't the free space reported by the post-analysis (or post-defragmentation) summary pop-up screen match what the Diskkeeper Fragmentation pane shows?

Several post-analysis and post-defragmentation summary screens include information about the amount of free space available on the volume for defragmentation. This figure is based on the space available to Diskkeeper, which may be less than the total free space on an NTFS volume. NTFS volumes reserve a percentage of the total volume for the Master File Table (MFT), which Diskkeeper cannot use for defragmenting files. Because of this, the figure shown in the Diskkeeper post-analysis and post-defragmentation summaries on NTFS volumes will not match the total free space figure displayed in the Diskkeeper Fragmentation pane (or other utilities like Disk Properties in Windows Explorer).

Should I use Diskkeeper on RAID arrays?

Yes—Diskkeeper supports all levels of software- and hardware-based RAID arrays. RAID arrays are often used to increase system performance. In a RAID array of four disk drives, for example, a file can be accessed up to four times as fast as on a single drive. This is because the file is spread between the four drives, and all four drives can be accessed at the same time, so the file can be retrieved much faster. However, like the files on a single disk drive, these file parts can become fragmented on the individual drives, which reduces the speed advantage of RAID. In fact, the effects of fragmentation can be more obvious in a RAID array than in a single disk drive.

Diskkeeper defragments RAID arrays just as it does single disk drives. Diskkeeper improves the speed and performance of a RAID environment by eliminating wasteful and unnecessary I/Os from being issued by the file system. In our four-drive array example, it would defragment the pieces of the file on each separate drive as though they were separate files, and as directed by the RAID controller.

Why do I get an incorrect excess fragment count after defragmenting an NTFS drive under Windows 2000?

Under Windows 2000, NTFS files that have been compressed, then decompressed, accumulate excess space allocations that Diskkeeper cannot move. (The defragmentation APIs can only move actual data, not unused allocated space in the file.)

Microsoft states in knowledge base article Q228198 "Disk Defragmenter Analysis Shows More File Fragments Than File Size Suggests" that the "excess allocation" is released when the file is closed. Experiments performed in our labs show that this is not the case. The disk must be dismounted and remounted (or the system rebooted) followed by an open and a close of the file for the excess allocation to be released.

Therefore, when this condition exists on an NTFS volume, Diskkeeper moves the data portion of a file, and if the file has an excess allocation, it can actually fragment the file—one piece being the data just moved, the other piece being the excess allocation "left behind". Diskkeeper notes this properly in its statistics. However, sometime after the file movement is completed and the file is closed, the excess allocation is released by Windows 2000. Thus, a subsequent analysis shows the fragmentation figures reported at the end of the defragmentation run to be wildly wrong.

This excess allocation phenomena was introduced in Windows 2000, but is not present in Windows XP or Windows Server 2003.

Diskkeeper engineers are working on a solution for this inconsistency. Until it is found, you can (1) avoid using NTFS disk compression or (2) perform a subsequent disk analysis to get the correct information.

Does Diskkeeper support Windows clustering?

Diskkeeper is certified for Windows clustering. To run Diskkeeper in a clustered environment, perform the following steps:

1. On the system that has control of the clustered disk(s), install Diskkeeper and schedule it.
2. Fail the clustered disks over to the other system, install Diskkeeper and schedule it.

After you perform these steps, Diskkeeper will run on the clustered system that remains in operation after the other clustered system has experienced a system failure. Diskkeeper will also run on the clustered disk/partition in an active-active cluster, defragmenting the clustered disk/partition on the system that currently has control of the disk/partition.

Note: the Diskkeeper Boot Time Defragmentation will not run on clustered partitions.

How can I run Diskeeper from an account that is not a member of the Administrators group?

If the account you are using is not a member of the Administrators group, you will not be able to install or operate Diskeeper. We recommend that you simply use the Set and Forget It feature to set a schedule to allow Diskeeper to run in the background on all systems. Since the Set It and Forget It operation runs under the SYSTEM process, there is no need for an administrator to be logged in when it is running.

Do I need to have the Diskeeper service running all the time?

Yes. **DkService** is the program that actually runs Diskeeper defragmentation jobs. It monitors the Diskeeper schedule file and starts defragmentation jobs when they are needed. If the Diskeeper service is disabled or not present, you will not be able to run Diskeeper at all.

That said, if you look at the DkService process using Task Manager, you will see that it uses only a few seconds of CPU time each week. The fact that it is running all the time is not going to use up system resources, or cause any problems.

Since installing Diskeeper, the number of disk errors I get has increased. Why is that?

Diskeeper tends to increase disk activity, and just by running, it can make weak points in the system break. In this case, you have some disk error, most likely in the free space where the Windows disk error checking utility (CHKDSK) cannot find it.

Run CHKDSK/R on your operating system volume at least, preferably on all volumes. That should correct any errors. (CHKDSK/F may not correct this issue.)

If CHKDSK itself aborts when it reaches the bad block, it indicates a disk problem which CHKDSK can't handle, and which will likely cause more trouble in the future. You should back up the volume and reformat (or replace) it to prevent the possibility of data loss due to drive failure.

If you are running Windows 95/98/ME, run Scandisk Thorough instead of CHKDSK.

How can I find which version of Diskeeper I have installed?

Open Diskeeper, click the **Action** menu, then select **About**. This tells you which Diskeeper edition, version and build is installed.

Appendix C

Support Services

U.S. Support Services

Registered users are entitled to 90 days of free telephone support, as well as special upgrade pricing, from Executive Software. Our free U.S. technical support is available Monday through Friday during the first 90 days from 7:00 A.M. to 5:30 P.M. Pacific time. If you have not yet registered your Diskeeper for Windows purchase, use the registration card in your Diskeeper box and do so now. Or, register your purchase online via our Web site at:

<http://www.executive.com>

Most technical support questions can be answered from the Technical Support section of our Web site at the address shown above.

You can also contact our technical support team via the Internet at:

tech_support@executive.com

Or via FAX at:

818-252-5514

If you are within your 90-day free support period, or have purchased telephone support, you can call:

818-771-1600

When your 90-day free support period has expired, you can purchase the support plan which best suits your needs. Executive Software offers 24-hour, 7-day support plans. Contact Executive Software to find out which support options suit you best.

Executive Software's address is:

Executive Software

7590 North Glenoaks Boulevard

Burbank, California 91504, USA

European Support Services

Registered users are entitled to 90 days of free telephone support, as well as special upgrade pricing, from Executive Software. Our free European technical support is available Monday through Friday during the first 90 days from 8:30 to 17:30 GMT. If you have not yet registered your Diskeeper for Windows purchase, use the registration card in your Diskeeper box and do so now. Or, register your purchase online via our Web site at:

<http://www.execsoft.co.uk>

Most technical support questions can be answered from the Technical Support section of our Web site at the address shown above.

You can also contact our technical support team via the Internet at:

tech.support@execsoft.co.uk

Or via FAX at:

+44 (0) 1342-327390

If you are within your 90-day free support period, or have purchased telephone support, you can call:

+44 (0) 1342-327477

When your 90-day free support period has expired, you can purchase the support plan which best suits your needs. Executive Software offers 24-hour, 7-day support plans. Contact Executive Software to find out which support options suit you best.

Executive Software's address is:

Executive Software UK Inc.

Kings House, Cantelupe Road

East Grinstead, West Sussex RH19 3BE

England

Appendix D

Remote Installation

Here are some methods for installing Diskeeper on multiple computers in a network.

Diskeeper PushInstall

The preferred method for installing Diskeeper on computers across your network is the PushInstall feature, available in Diskeeper Administrator Edition. Using the Push Install feature, Diskeeper Administrator Edition can install Diskeeper Professional Edition or Diskeeper Server Standard Edition simultaneously to multiple computers on a network from a single machine acting as an administrative console. Diskeeper PushInstall can save you a tremendous amount of time and effort, especially on large networks, where the same software needs to be installed on hundreds, or even thousands of computers.

To make use of the PushInstall feature, you must install Diskeeper Administrator Edition on a computer that will act as the administrative console for all your Diskeeper installations network-wide. You must also be logged into a domain administrator account. The receiving computers must be running a Windows version supported by Diskeeper Professional Edition or Diskeeper Server Standard Edition.

Refer to the Diskeeper Administrator Edition User Manual or Help system for detailed instructions on using the PushInstall feature.

Appendix E

Diskeeper as a Cluster-Aware Application on a Cluster Server

Diskeeper can be run as a cluster-aware application on a cluster server. To do this, you must set up the DkCluster.exe executable image as a cluster resource and bring it online. DkCluster.exe is supplied with Diskeeper, and is located in the directory where Diskeeper is installed.

Requirements

Note: This feature is only available on Windows 2000 and Windows Server 2003 systems. Diskeeper must be installed on all the nodes of the cluster upon which you want to run Diskeeper, under the same drive names and directories.

Setting Up the Cluster Resource and Bringing it Online

Follow these steps to set up the cluster resource and bring it online:

1. Start the Cluster Administrator from the **Start | Administrative Tools** menu.
2. Create a new group by selecting **New**, then **Group** from the **File** menu.
3. Specify **ESI** for the group name, optionally add a description for the new group and click **Next**.
4. Select the nodes that Diskeeper is going to run on from **Available nodes:** list and **Add** them to the **Preferred owners:** list.
5. Click **Finish** to create the new cluster group.
6. Select the newly created group from the **Groups** tree.
7. Create a new resource by selecting **New**, then **Resource** from the **File** menu.

104 Diskeeper as a Cluster-Aware Application

8. Specify **DkCluster** for the name and optionally add a description for the new resource.
9. Choose **Generic Application** for the **Resource type:** and click **Next**.
10. The **Possible Owners** dialog box will display the nodes chosen in step 4 shown in the **Possible owners:** list box. Click **Next**.
11. Click **Next** on the **Dependencies** dialog box.
12. Under **Command line**, specify the path for the **DkCluster.exe** executable image which resides in the Diskeeper install directory.
13. Enter the Diskeeper install directory path under **Current directory**.
14. Check the **Allow application to interact with desktop** box and click **Next**.
15. Click **Finish** in the Registry Replication dialog box.
16. You can move the ESI group to the node on which you want to bring the **DkCluster** cluster resource online by right clicking on the ESI group in the Move Group option box.
17. To bring **Dkcluster.exe** online, select the **DkCluster** resource and select **Bring online** from the **File** menu.
18. Right-click **DkCluster** and select **Properties**.
19. Click the **Advanced** tab.
20. Select **Restart**.
21. Set **Threshold** to **0** (fails over immediately), or decide what value is wanted here. (The threshold value is the number of times the application will return to the same computer before it fails over to the next computer.)
22. Set **Period** to **1000**. (Period is the time interval in seconds, during which the threshold count is tracked. After that time has elapsed, the threshold count starts over.)
23. Click **OK**.

Glossary

access: To store *data* on, or retrieve data from, a *disk drive* or other *peripheral device*. See also *file*.

administrator: See *system administrator*.

applet: A small *application* program that is usually built into an *operating system* or a larger application program. For example, the built-in writing and drawing programs that come with *Windows* are sometimes called “applets.”

application: A computer *program*, which causes a computer *system* to perform some useful work for the user.

AutoPlay: A feature of some *Windows* applications on *CD-ROM* that causes the program to start automatically when the CD-ROM is placed in the drive.

background processing: The execution of certain operations during momentary lulls in the primary (foreground) process. An example of a background process is printing while a word processor is waiting for keystrokes.

binary: From Latin “bini,” meaning two by two and “ary,” meaning of, or pertaining to. Computers use the binary number system, which is a way of counting in which only two *digits* (0 and 1) are used. Contrast with the familiar decimal number system, in which we count with 10 digits (0 through 9).

bit: Short for *binary digit*. The smallest unit of information handled by a computer. Like a light switch, a bit is either on or off, which corresponds to a numerical value of one or zero. Larger numbers are expressed by groups of bits. See also *byte*.

boot: Refers to the initial start-up of a computer, such as when you turn on the computer’s power. From the word “bootstrap,” indicating the computer “lifts itself by the bootstraps;” that is, it gets itself going.

boot-time: The time during which a computer *boots*; that is, the computer is starting up and the *operating system* has not yet taken over control of the computer.

browser: A software program, such as Microsoft’s *Internet Explorer*, designed to locate and view Web pages on the *Internet*. In addition to displaying text, modern browsers also can display pictures and play sounds.

byte: A group of eight *bits*, which can represent a number from zero through 255, a letter of the alphabet, or a variety of other things.

cache: From the French word *acher*, meaning “to hide.” A temporary storage facility designed to speed things up by providing information to software that would

otherwise have to be obtained from a slower *medium*. Caches exist for Web browsers, *disk drives* and *CPUs*. See also *cache memory*.

cache coherency: A condition where the *data* contained in the *cache memories* in a computer with multiple processors is kept consistent at all times.

cache memory: In computers, a cache is a small amount of very fast *memory* that is placed close to (or inside) the *CPU chip*, in order to improve performance. The cache memory holds copies of recently accessed *data*. Because computer programs often run the same instructions repeatedly, many times the CPU will find the data it needs in the cache and therefore will run faster because it does not need to access the computer's main memory.

CD-ROM: Compact Disk Read-Only Memory. A stiff plastic disk commonly used by *software* manufacturers to distribute software to customers. As the name implies, the original contents of a CD-ROM cannot be changed.

central processing unit (CPU): The part of the computer hardware that controls the computer's overall operation and performs computations. Most modern CPUs are built into a single *integrated circuit* or *chip*. See also *Pentium*, *x86*.

chip: See *integrated circuit*.

CHKDSK: A program (supplied with Windows NT, Windows 2000, Windows XP, and Windows Server 2003) that checks the integrity of a disk and corrects disk errors such as lost *clusters*. See also *scandisk*.

client: In a computer *network*, a computer that uses the services of another computer, called a *server*. For example, a client can "ask" a server to provide it with needed data, or to print a file for the client. See also *server*, *workstation*.

cluster: Smallest addressable unit of space on a disk. A one-byte file will actually use a cluster of disk space. The minimum size of a cluster depends on the size of the disk *volume*. The *FAT file system* allows a maximum of 65,536 clusters per volume, which means that the cluster size on a 64-megabyte disk volume is one kilobyte, while a 128-megabyte volume uses two-kilobyte clusters. Thus, the FAT file system can be very wasteful of disk space on large volumes. The *NTFS* file system does not suffer from this limitation.

COM: Acronym for Component Object Model, a specification developed by Microsoft for building software *components* that can be made into programs or add functionality to existing programs running on Microsoft Windows platforms.

component: A small modular *program* that performs a specific function and is designed to work interactively with other components and *applications*. See also *applet*, *COM*, *DCOM*.

contiguous: Adjacent; placed one after the other. A contiguous file is not fragmented; that is, it takes up a single “chunk” of disk space. See also *fragmentation, defragmentation*.

control file: A file (**Diskeep.ctl**) used by *Diskeeper* to keep track of and control scheduled defragmentation of disk volumes. See also *Set It and Forget It*.

controller: A specialized electronic circuit, which serves as an *interface* between a *device*, such as a *disk drive*, and a computer. See also *IDE, SCSI*.

CPU: see *central processing unit*.

data: Information, as processed by a computer. Plural of the Latin word *datum*, meaning an item of information.

database: A collection of related information about a subject, organized in a useful manner that provides a base or foundation for procedures such as retrieving information, drawing conclusions, and making decisions.

datum: Singular of *data*.

DCOM: Acronym for Distributed Component Object Model, a version of the Component Object Model (*COM*) software developed by Microsoft to support *objects* distributed across a network. For example, the *Set It and Forget It* feature of *Diskeeper* uses DCOM to start a scheduled *defragmentation*.

defragmentation: The reduction or elimination of *fragmentation*, by making files and/or free disk space more *contiguous*.

device: A machine, such as a printer or a *disk drive*.

digit: From Latin “digitus,” meaning finger. Any of the numbers 0 through 9 in the decimal number system, called a digit because people originally used their fingers for counting. Computers use a *binary* number system with only two digits (0 and 1).

directory: A file that contains a catalog of files and other directories stored on a disk, which allows you to organize your files into groups, making them easier to find.

directory consolidation: A *Diskeeper* feature which, at *boot-time*, gathers (almost) all *directory* entries on a disk *volume* into a single area on the disk, instead of scattered in many places. Directory consolidation makes *defragmentation* more effective than it would otherwise be. Directory consolidation requires sufficient contiguous free disk space into which the directories can be moved.

disk drive: A *device* containing one or more disks, treated as a unit by a computer.

Diskeeper: A *software* product that increases *system* performance through disk *defragmentation*. It eliminates *resource-wasting file fragmentation* safely, by consolidating fragmented files and free space.

diskette: See *floppy disk*.

domain: In *Windows NT, Windows 2000, Windows XP and Windows Server 2003*, a group of *workstations and servers*, defined by an *administrator*, that share a common directory database and allow a user to log onto any *resource* in the domain with a single user ID and password. Each domain in a network has a unique name.

drive: See *disk drive*.

drive letter: In *Windows and MS-DOS operating systems*, the naming convention for *disk drives*, consisting of a letter, followed by a colon. Drives A: and B: are normally reserved for *floppy disk* drives and C: typically indicates the first *hard drive*. See also *volume*.

encrypted file: A file that has been scrambled and made unrecognizable by anyone who does not have the proper “key” to decode it. The Windows 2000, Windows XP and Windows Server 2003 Encrypting File System (EFS) allows users to encrypt files and folders on an NTFS volume to prevent access by unauthorized individuals.

event logging: The process of recording audit information when certain events occur, such as *services* starting and stopping, users logging on and off and accessing *resources*. When running Diskeeper on Windows NT, Windows 2000, Windows XP, and Windows Server 2003 systems, logged events can be viewed with the *Event Viewer* utility (in Administrative Tools.) When run on Windows 95/98/Me systems, Diskeeper logs events to a text file that can be viewed with a variety of text editor programs such as Notepad.

Event Viewer: A utility available on Windows NT, Windows 2000, Windows XP, and Windows Server 2003, which permits the viewing of logged events. See also *event logging*.

extended partition: A type of *partition* that permits the limitation of four partitions per disk drive to be overcome. A disk drive may be partitioned into a maximum of four *primary partitions*, or three primary partitions plus an extended partition. One or more *logical drives* may be created within an extended partition.

FAT: See *file allocation table*.

FAT file system: The *file system* used by *MS-DOS* and adapted for *Windows* to store information on disks, which makes use of a *file allocation table*. There are three types of FAT file system. The FAT12 (12-bit) is used on FAT volumes smaller than 16 megabytes in size, such as *floppy disks*—it is not supported by Diskeeper. FAT16 can be found on all versions of Windows from *Windows 95* through *Windows Server 2003*. Windows Server 2003, Windows 2000, Windows Me, Windows 98, and the later OSR 2 version of Windows 95 also support FAT32; Windows NT does not.

field: A subdivision of a *record* in a *file*. For example, a record in a customer file may contain a name field, an address field and a phone number field.

file: A complete, named collection of *data*, such as a *program*, a set of data used by a program, or a user-created document. See also *record*, *field*.

file allocation table (FAT): A table or list maintained by some *operating systems*, to keep track of how *files* are stored on a disk.

file system: The method used by an *operating system*, of naming, *accessing* and organizing *files* and *directories* on a disk. See also *NTFS*, *FAT file system*.

floppy disk: A removable storage *medium*, consisting of a small magnetic disk made of flexible plastic, housed in a square protective envelope or cartridge. Originally, floppy disks really were “floppy,” because they were enclosed in a paper envelope. Also called a *diskette*, which is a better name for the more recent design that uses a stiff plastic cartridge. Contrast with *hard disk*.

formatting: A method of preparing a disk surface for use by placing certain magnetic patterns on it, which are used by the *file system* in storing and retrieving *data*.

fragmentation: The word *fragmentation* means “the state of being fragmented.” The word *fragment* means “a detached, isolated or incomplete part.” It is derived from the Latin “fragmentum,” which in turn is derived from “frangere,” meaning “break.” So, *fragmentation* means that something is broken into parts that are detached, isolated or incomplete.

gigabyte: A measure of computer storage capacity equal to approximately a billion bytes. A gigabyte is two to the 30th power, or 1,073,741,824 bytes.

graphical user interface (GUI): Pronounced “gooey.” A user *interface*, as used in the *Windows operating systems*, which uses a mouse and graphic displays to interact with the user, with the purpose to make the computer system easier to use than other operating systems, such as *MS-DOS*.

GUI: See *graphical user interface*.

hard disk: One or more rigid metal platters, coated with magnetic material. Contrast with *floppy disk*, or *diskette*, which is made of plastic. Also used to refer to the physical unit that makes up a *disk drive*.

hardware: The physical parts of a computer *system*, including *devices* such as printers and *disk drives*. Contrast with *software*.

IDE: Integrated Device Electronics. One of two common types of *interfaces* between a *disk drive* and a computer, where the *controller* is built into the disk drive, which eliminates the need for a separate controller card in the computer. See also *SCSI*.

integrated circuit: Also called a *chip*. A collection of electronic parts with a specific purpose, built into a single physical package. See also *central processing unit*.

Intel: Manufacturer of *processor chips*, known especially for the *Pentium* and *x86* processors.

interface: The connection and interaction between *hardware*, *software* and/or the user. For example, a disk *controller* provides a physical interface between a computer and a *disk drive*. The keyboard, mouse and display are an interface between a computer and the user.

Internet: A global *network* that links millions of computers. One popular section of the Internet is the World Wide Web, which allows computer users to view text and pictures with the aid of a browser, such as *Internet Explorer*. E-mail (electronic mail) is another popular part of the Internet, which allows computer users to send and receive written messages.

Internet Explorer: A software package developed by Microsoft for browsing the *Internet*, but increasingly used with other applications.

job: A request to have the computer or its *peripherals* perform some activity. In relation to *Diskeeper*, it is a request to have a disk *defragmented*.

log file: A *file* that keeps track of certain events as they occur. The *Windows NT/2000/XP operating system* maintains several log files that can be viewed with the *Event Viewer*. On *Windows 95/98/Me* systems, *Diskeeper* uses a specially created text file for the same purpose. See also *Event Logging*.

logical drive: That portion of the space on a *disk drive* that is considered by the *software* to be a single unit. In this context, *logical* means “conceptual.” because there is no direct relationship between the name and a physical object. See also *partition*, *volume*.

long filenames: In the DOS operating system, filenames were limited to a maximum of eight characters, followed by a period and up to three characters to indicate the type of file. This is also referred to as the 8.3 file naming convention. The Windows 95/98/Me, Windows NT, Windows 2000, Windows XP, and Windows Server 2003 operating systems allow filenames that are over 200 characters long. In addition, these filenames may contain a mixture of upper- and lowercase characters and embedded spaces.

master file table (MFT): On an *NTFS volume*, the master file table is a *file*, which contains information about all other files in that volume. This includes the name of each file, its physical location on the disk, and other information.

media: A collective word for the physical material on which computer-based information is stored, such as a *CD-ROM* or *floppy disk*. Media is the plural of *medium*, but like *data* is often used in the singular form.

medium: See *media*.

memory: The computer's temporary working storage, where *program* instructions and *data* are kept, permitting the *CPU* to process the instructions.

MFT: See *master file table*.

Microsoft: A computer *software* company, with its head office in the state of Washington; creators of the *MS-DOS* and *Windows operating systems*.

MMC: Microsoft Management Console. MMC can be used to create, save and open administrative tools (called *snap-ins*), such as Diskkeeper. MMC provides a common user interface for system tools, as well as a system for managing hardware, software and network components.

MS-DOS: Microsoft Disk Operating System. An *operating system* designed for a small computer with a single user running one *application program* at a time.

multitasking: A feature of an *operating system*, where the computer can work on more than one *task* at a time. See also *background processing*.

network: A group of computers that are connected together and capable of exchanging data with each other. See also *server*, *client*.

NTFS: New Technology File System. A file system designed specifically for use with Windows NT, Windows 2000, Windows XP, and Windows Server 2003.

OEM: Acronym for original equipment manufacturer. The term is misleading, because an OEM typically buys computers from another manufacturer, customizes them for a particular application, and then sells them under the OEM's own brand name.

operating system: A collection of *programs*, which perform *system* functions and control the running of *application* programs and the allocation of *resources*.

OSR 2: Acronym for *OEM Service Release 2*, a version of *Windows 95* released in late 1996, which features an improved file system, called *FAT32*, while the original version of *Windows 95* used *FAT16*.

page file or paging file: An area of a disk that is set aside to hold *data* intended to reside in the computer's *memory*. Portions of the paging file are copied to memory as needed. This mechanism requires a much smaller amount of physical memory than would be required if the entire *program* were to be loaded into memory all at once. See also *swap file*.

partition: A subdivision of the space on a *disk drive* that is treated as though it were a separate physical unit. A computer with only one hard disk drive can have a single partition, often called drive C:, or it can have several partitions, such as drive C:, drive D:, and drive E:. See also *volume*, *drive letter*, *primary partition*, *extended partition*, *logical drive*.

Pentium: The name of a type of *processor*, introduced by *Intel* in 1993. It is the successor to the 80486 and equivalent to the 80586 chip in the *x86* series.

peripheral device: (Related to *periphery*, roughly meaning “on the outside.”) A *device*, such as a *disk drive*, printer, keyboard or mouse, connected to and used by a computer.

permission: The ability of a user on a computer *system* to *access* or modify *files*, especially those that he or she did not create. Permissions exist for security reasons, to prevent unauthorized access to sensitive information. The *system administrator* assigns permissions, or “who has access to what.”

platform: The environment, in which a computer system operates, either based on the computer’s CPU or its operating system. For example: the *x86* platform, or the *Windows Server 2003* platform.

platter: A *disk drive* consists of one or more platters, each of which can receive magnetic recordings on both sides. The platter spins like a phonograph record on a turntable.

primary partition: In *Windows* and *MS-DOS operating systems*, the disk space on a *disk drive* may be divided into a maximum of four primary partitions; or three primary partitions plus an *extended partition*, which in turn can contain one or more *logical drives*.

priority: On a *Windows system*, several *programs* can appear to be running at once, even though the *CPU* can only process one instruction at a time. With the help of the *operating system*, the CPU processes a few instructions from one program, then a few instructions of the next program, and so on, over and over. Without priority assignments, each program would be given about the same amount of time in each “time slot.” but by assigning priorities, the more important programs can be given longer time intervals than the less important ones, allowing them to complete faster.

process: A *program*, along with the system *resources* the program requires to run. A process represents a unit of resource ownership and work to be done. The *operating system* creates processes to keep track of resources and to ensure the proper scheduling of *tasks*.

processor: See *central processing unit*.

program: A set of instructions that tell a computer what to do. Synonym: *software*.

RAID: Redundant Array of Independent Disks. A method of combining several *disk drives* to make one large volume. Typically used on a *network file server* to achieve faster *access*, greater protection against disk failure, or both.

record: A collection of related *data* items, treated as a unit. For example, in a *file* containing information about a company's customers, one record would consist of the particulars (name, address, phone number, etc.) of one customer. See also *field*.

registry: A *database* that contains information about current *hardware* settings, installed *software*, user preferences and associations between *file* types, and *applications* that *access* those files.

resource: Any part of a computer system, such as a *disk drive*, printer, or *memory*, which can be used by a *program*.

scandisk: A program (supplied with Windows 95, Windows 98 and Windows Me) that checks the integrity of a disk and corrects disk errors such as lost *clusters*. See also *CHKDSK*.

SCSI: Small Computer System Interface. One of two common methods of *interfacing disk drives* and other *devices* to computers. See also *IDE*.

server: On a computer network, a computer that makes *resources* available to other computers (*clients* or *workstations*.) For example, all the computers on a network can be set up to share a single high-speed printer, which is connected to the server. Usually, the server is faster and more powerful than the client computers connected to it.

service: A process that performs a specific system function and often provides an application programming interface (API) for other processes to call. *Diskeeper* uses a *Windows* service, which allows *Diskeeper* to run in the *background* while other applications are running.

Service Pack: A collection of *software* used to issue corrections and updates to software between major releases. Usually refers to compilations of corrections and updates to a *Windows* operating system.

Set It and Forget It: A term that was created by Executive Software, which is a registered trademark and hallmark of the company. A "Set It and Forget It" product can operate transparently (unseen by the user) and in the *background* (concurrent with other *applications*). After a schedule is set up for its operation, it thereafter performs its functions at predetermined times, without further intervention or attention from the user or *administrator*.

Smart Scheduling: A feature, introduced with *Diskeeper* 6.0, which has a built-in mechanism to determine how frequently a disk *volume* needs to be *defragmented*. With Smart Scheduling, *Diskeeper* automatically schedules defragmentation runs to

occur more often when a disk volume becomes more fragmented, or less often when it becomes less fragmented.

SMS: System Management Server. A *software* product from *Microsoft*, which permits the *system administrator* on a Windows NT, Windows 2000 or Windows Server 2003 *network* to do such things as install and run new software on different computers on the network, all from a single location.

snap-in: A program, such as Diskkeeper, that can be used with the Microsoft Management Console (*MMC*). For more information, see the MMC Help facility.

software: A generic term for computer *programs*, taken collectively. Contrast with *hardware*. Software can be categorized into *application* software and *system* software.

sparse files: A method of storing large files—that contain mostly empty space and not much data—in a way that uses much less disk space than would otherwise be used. Sparse file support allows an application to create very large files without committing disk space for every byte.

swap file: A *file* on a *disk drive* that *Windows 95/98/Me* uses to hold temporary *data* that will not fit into *memory*. When needed, the *operating system* moves data from the swap file to memory. See also *paging file*.

system: The collection of one or more computers and *peripheral devices*. Sometimes used as a synonym for *operating system*, or the combination of *hardware* and *software*, as a logical unit.

system administrator: The person in charge of maintaining a multi-user computer *system*.

system file: In general, a *file* that is part of, or *accessed by*, the *operating system*. The Diskkeeper Drive Map display shows certain system files in green, particularly the *master file table* (MFT) and several other files that cannot be moved safely by Diskkeeper (or any other defragmenter). These are not the files that make up the *Windows operating system*, but the files that make up the *NTFS file system*.

task: A *program* or portion thereof that is run as an independent entity.

terabyte: A measure of computer storage capacity equal to 2 to the 40th power or approximately a thousand billion *bytes* (or a thousand *gigabytes*).

trialware: A free software package from Executive Software, such as Diskkeeper, that has the same functionality as the official version of the software, but which works for a limited time period, after which it expires. Trialware allows you to try the software before making a buying decision.

utility: A *program* that provides basic services or functions.

volume: A subdivision of the space on a *disk drive* that is treated as though it were a separate physical unit, or a combination of physical disks treated as a single unit. A computer with only one hard disk drive can have a single volume, often called drive C:, or it can have several volumes, such as drive C:, drive D:, and drive E:. See also *drive letter*, *logical drive*, *partition*.

volume set: In *Windows*, a single *logical drive*, which is composed of up to 32 areas of free space on one or more *disk drives*. Volume sets can be used to combine small areas of free space on one or more disk drives into a larger logical drive, or to create a single large logical drive out of two or more small disks.

Windows: A family of *operating systems*, first introduced by *Microsoft* in 1983, with a *graphical user interface* and which ran on *MS-DOS* based computers. See also *Windows 95*, *Windows 98*, *Windows NT*, *Windows 2000*, *Windows XP* and *Windows Server 2003*.

Windows 2000: Originally named *Windows NT 5.0*, Windows 2000 is a family of operating systems for desktop computers and network servers, announced by *Microsoft* in 1998. Windows 2000 resembles *Windows NT 4.0* and *Windows 98*, but has many enhancements and new features. Windows 2000 is available in several editions, ranging from Windows 2000 Professional to Windows 2000 Advanced Server.

Windows 95: A version of *Windows* released in 1995. New features in Windows 95 with regard to its predecessor, Windows 3.1, include a new user interface and support for 32-bit applications. See also *OSR 2*.

Windows 98: Successor to the *Windows 95* operating system, Windows 98 features support for the *FAT32 file system*, greater Internet integration, and supports recent hardware developments.

Windows Me: Short for Windows Millennium Edition, an operating *system* released by *Microsoft* in September 2000. Successor to *Windows 98* and designed for home use, Windows Me offers enhancements in the areas of digital *media*, *user interface*, home *networking*, and the *Internet*.

Windows NT: An *operating system* released by *Microsoft* in 1993 (NT stands for New Technology.) It has a similar *graphical user interface* to *Windows*, but it does not run over *MS-DOS* and has been designed specifically for computer *network* environments.

Windows Server 2003: An operating system released by *Microsoft* in 2003 as the follow-up version to Windows 2000 Server. Like its predecessor, it has a similar graphical user interface to Windows, but it does not run over MS-DOS and has been designed specifically for computer network environments. Windows Server 2003 is available in Standard, Web, Enterprise, and Datacenter editions.

Windows XP: An operating system released by *Microsoft* in 2001 as the follow-up version to *Windows 2000*. Like its predecessor, it has a similar *graphical user interface* to other Windows versions, but it does not run over MS-DOS and has been designed specifically for computer network environments. Windows XP is available in several editions for different uses, such as Windows XP Professional for corporate use, or Windows XP Home Edition for home users.

workgroup: In *Windows NT*, *Windows 2000*, *Windows XP*, or *Windows Server 2003*, a workgroup consists of one or more computers that do not participate in a *domain* and are therefore responsible for their own security and administration.

workstation: A computer that has been set up for use by an individual typically connected to a *network*. The term is also used to indicate a *client* computer, in contrast with a *server*.

x86: Symbol to represent a series of *CPUs*, manufactured by *Intel* and others, including model numbers 8086, 80286, 80386, 80486 and 80586 (*Pentium*). All of the CPUs in this series have certain characteristics in common, which permits *software* to be written that will run on any of them.

Index

A

About Diskkeeper option 56
 About the Diskkeeper Service..... 7
 Access permissions
 setting 93
 Additional software requirements 2
 Analysis
 fragmentation..... 11
 Analyze Button 58
 Analyze selected drive 52
 Application Event Log *See* Logging
 Automating Diskkeeper 43
 AutoPlay 4
 Average File Size 37
 Average Fragments per File 37

B

Background process 7, 20, 23, 43, 85
 Before the Installation..... 1
 Boot-time defragmentation 55
 Boot-Time defragmentation 24, 26
 Directory Consolidation 24, 59, 60
 Master File Table defragmentation. 60
 overview 59
 Paging File Defragmentation 24, 60, 91
 running a 61
 scheduling..... 63

C

cache coherency 84
 CD-ROM 3, 4
 Check for updates 6
 CHKDSK program..... 61, 63
 Clear a schedule 51
 Cluster Server..... 103
 Colors, what they mean..... 42
 Command Line Interface 26
 Command pane 49

Command prompt operation..... 81
 Consolidating free space 92
 Control, tabbed..... 30
 Custom schedule 51

D

DCOM..... 2, 5, 23
 Defragment Button..... 58
 Defragment selected drive..... 53
 Defragmentation
 and the Master File Table 91
 at boot-time..... *See* Boot-Time
 boot-time..... 55
 changing the method..... 55
 Directory Consolidation.*See* Boot-Time
 files not moved to beginning of disk 92
 free space consolidation..... 92
 how often to run..... 93
 incomplete 89
 jobs not starting at the same time... 94
 manual 23
 method 55
 modes..... 23
 of paging file..... *See* Boot-Time
 power management..... 55, 70
 priority 68
 Set It and Forget It..... 23
 using different methods 25, 69
 Design Goals 83
 Directory Consolidation.. *See* Boot-Time
 Disk space required 2
 Disk Volume pane..... 57
 Diskkeeper
 before and after comparison 11
 design goals 83
 directories not moved 91
 FAQs option 57
 features 21
 getting started 11
 getting the most from..... 26
 how often to run..... 93
 installation 1

interface 29

logging activity 71

overview 21

priority 25

program group 4

reinstalling 7

running from the prompt operation. 81

seeing reduction in fragmentation... 11

service 7

uninstalling 8

Diskeeper Lite 4

Disks supported 2

DkEventLog.txt 8, 72

Drive Map pane 41

E

Event Log *See* Logging

setting up the 7

Event Logging

setting options 55

Event Viewer 72

Exclusion List 25

dialog box 66

internal 68, 90

User-defined 54

Extended partitions 2

F

FAQs option 57

File record examinations 80

File Systems Supported 1

Files not moved to beginning of disk .. 92

Fragmentation

analysis 11

definition of ix, 83

effects of ix, 83

Fragmentation pane 35

Fragmented file examinations 80

Fragments eliminated 80

Free Space

consolidation 92

mismatch in reporting 94

Frequently-Asked Questions (FAQs)

option 57

G

Getting Started 11

Getting the most from Diskeeper 26

Glossary 105

H

Help Button 59

Help Topics option 56

I

Information pane 30

Installation

before the 1

details 3

overview 3

remote 8

short version 3

Installing

Service Packs 6

Interface

user 29

L

Logging

Application Event Log7, 22, 25, 71, 94

Defragmentation start and stop 73

Defragmented files 74

Directory information 78

Disk information 75

Diskeeper activity 71

File information 76

MFT information 79

Moved files 74

on Windows 95/98/Me 8

Paging File information 77

Service start and stop 73

Specifying What Gets Logged 72

Logical drives 2

M

Master File Table (MFT) 91

Master File Table Defragmentation 60

Menu
 Set It and Forget It 50
 MMC 2, 5, 23
 Most Fragmented Files 39

N

NTFS ix, 1, 22, 36, 37, 42, 89

P

Paging File Defragmentation .. 24, 60, 91
 Partitions
 extended 2
 primary 2
 Pause Button 58
 Pentium processor 1
 Performance 85
 Performance data 55
 Performance pane 30
 Platforms supported 1
 Power management 55, 70
 Preface vii
 Primary partitions 2
 Priority 25
 setting the 68
 Process Live Disks 85
 PushInstall 101

Q

Quick Tour 12

R

RAID arrays 2
 Registering Diskeeper 6
 Registry 4
 Reliability pane 33
 Remote Installation 101
 Repairing Windows 7
 Requirements, additional software 2
 Resource requirements 2, 7
 Resume Button 58
 Run every night 51
 Run weekends only 51

S

Safety 84
 Schedule
 clearing a 51
 custom 51
 Scheduling
 Screen Saver mode 48
 Set It and Forget It 43
 Smart Scheduling 46
 Screen Saver mode 48, 51
 Select schedule type 45
 Service Pack 2, 4, 6
 Service, Diskeeper 7
 Set It and Forget It 43
 pane 43
 Set It and Forget It pane
 controls 45
 Setting up the Application Event Log ... 7
 SETUP.EXE 3
 Sitekeeper x
 Smart Scheduling 46, 50
 after hours 50
 Software, additional requirements 2
 Specifying What Gets Logged 72
 Stop Button 59
 Summary File 64
 Support Services
 Europe 100
 U.S. 99

T

Tabbed Control 30
 Terabyte Volume Engine 80
 Theory of Operation 83
 TVE 80

U

Undelete x
 Uninstalling Diskeeper 8
 Updates
 checking for 6, 57
 User Interface 29

V

Versions supported..... 1
View Readme option..... 56
Volume sets..... 2

W

Windows
Application Event Log..... 71
disks supported 2
file systems supported 1

priority 25
registry 4
repairing..... 7
resource requirements 2
service packs 6
versions and platforms supported 1
Windows 95/98/Me
Event Logging 8

X

X86 processor family 1